

CONTENTS

1) General Information	Page No.
Special Provisions	3
Board of Studies Requirements.....	3
The Requirements of the Education Act 1990 (Attachment 1)	4
Pattern of Study Requirements Checklist for the 2009 HSC (Attachment 2).....	5
School-Based Monitoring Processes for the 2009 HSC (Attachment 3)	6
Burwood Girls High School HSC Assessment Policy & Procedures	7
1. General Information	7
2. Notification of Assessment Results.....	7
3. Student Responsibilities.....	7
4. Assessment Task Procedures	8
5. Unsatisfactory Completion of Course.....	9
6. What Happens if you Miss a Task?.....	10
7. Cheating or Malpractice	10
8. Reviews and Appeals.....	10
9. Information and Advice	11
Assessment Task Flow Chart.....	12
Glossary of Key Words	13
Example of Illness, Accident or Misadventure form.....	14
Sample Letter: Official Warning of 'N' Determination (HSC)	15
2) Subject Information	
Ancient History	18
Biology	19
Business Studies.....	20
Chemistry	21
Chinese Background Speakers.....	22
Chinese Continuers.....	23
Chinese Extension	24
Community & Family Studies	25
Dance.....	26
Drama	27
Economics.....	28
English Advanced	29
English (ESL)	30
English Extension 1.....	31
English Extension 2.....	32
English Standard.....	33
Exploring Early Childhood.....	34
Extension History	35
Food Technology	36
French Continuers.....	37
French Extension	38
General Mathematics	39
Hospitality Operations VET	40
Indonesian Continuers	42
Indonesian Extension.....	43
Information Technology VET.....	44
Italian Beginners	46
Italian Continuers	47
Italian Extension.....	48
Japanese Beginners	49
Legal Studies	50

Mathematics 2 unit.....	51
Mathematics Extension 1.....	52
Mathematics Extension 2.....	53
Modern History	54
Music 1, Music 2.....	55
Music Extension.....	56
Personal Development, Health & Physical Education	57
Physics	58
Senior Science.....	59
Society and Culture	60
Software Design and Development	61
Studies of Religion 2 unit.....	62
Studies of Religion 1 unit.....	63
Textiles & Design.....	64
Visual Art	65

Appendix

Calendar of Assessment Tasks	66
Student Planner of Assessment Tasks	67

VET = Vocational Education & Training

Note: The following courses are not being run in 2009:

*Earth & Environmental Science, Geography, Information Processes & Technology,
Photography 1 unit, Photography 2 Unit, Visual Design*

1) GENERAL INFORMATION

Introduction

Student assessment provides evidence for making judgement about student achievement. This booklet will inform you clearly of assessment tasks that must be completed to show that you have satisfied the requirements of the course.

The student must also **complete all course work to a satisfactory standard** in order to meet the requirements of the HSC course.

Your Year Advisers and the Careers Adviser are available to assist you if you have any concerns or problems regarding your Higher School Certificate, the University Admission Index (UAI) or whether your pattern of study best suits the career path you wish to take.

It is most important to keep your Year Advisers up to date with changes to your study. They will provide you with support if you are experiencing any problems that may affect your studies. If you are going to be absent for any period of time, seek approval from the Principal first. Extended leave for Year 12 students is unlikely to be approved by the Principal.

Mia Kumar
Principal

Janice Raynor
Year Adviser

SPECIAL PROVISIONS

If your daughter has a diagnosed medical condition such as a mental health issue or diagnosed learning difficulty she may be eligible for Special Provisions. Special Provisions must be applied for and approved by the Board of Studies for the School Certificate and Higher School Certificate examinations. They may also apply for school based assessment tasks. Special Provisions may include extra time to write, extra time to rest and separate supervision. Should your daughter be eligible please contact the school counsellor, Marja Boddeus on 97473355

BOARD OF STUDIES REQUIREMENTS FOR THE AWARD OF A 2009 HSC

Students should refer to:

- Rules and Procedures for 2009 Higher School Certificate Candidates.
- Requirements of the Education Act 1990 (Attachment 1) (see page 4) and Pattern of Study Requirements Checklist for the 2009 Higher School Certificate (Attachment 2) (see page 5).

**THE REQUIREMENTS OF THE *EDUCATION ACT 1990*
IN RELATION TO THE NEW SOUTH WALES HIGHER SCHOOL CERTIFICATE**

Higher School Certificate – section 95

Higher School Certificates are to be granted by the Board of Studies to students who:

- (a) have been granted a School Certificate, or who have attained such other qualifications as the Board considers satisfactory; and
- (b) have attended a government school, or registered non-government school to which a current certificate of accreditation applies, or school outside New South Wales recognised by the Board, or a TAFE establishment within the meaning of the *Technical and Further Education Commission Act 1990*; and
- (c) have participated, to the Board's satisfaction, in courses of study which have been determined under this Act as appropriate to be undertaken by candidates for the Higher School Certificate; and
- (d) have been accepted by the Board as having satisfactorily completed those courses of study; and
- (e) have, to the Board's satisfaction, undertaken the requisite examinations or other forms of assessment; and
- (f) have complied with any requirements prescribed by the regulations or any requirements imposed by the Minister or the Board.

The Board may refuse to grant a Higher School Certificate to a student whose attendance or application at school has been of such an unsatisfactory character that the grant of the certificate would not, in the opinion of the Board, be justified.

Curriculum for Higher School Certificate candidates – section 12

The curriculum during Year 11 and Year 12 for students who are candidates for the Higher School Certificate must meet the following requirements:

- (a) courses of study of a general description determined by the Minister on the recommendation of the Board are to be provided for each student in each Year,
- (b) those courses of study are to include a course of study in English,
- (c) those courses of study are to comply with a pattern of study determined by the Minister on the recommendation of the Board,
- (d) those courses of study are to be taught in accordance with a syllabus developed or endorsed by the Board and approved by the Minister.

These requirements are articulated in Attachment 2.

**PATTERN OF STUDY REQUIREMENTS CHECKLIST
FOR THE 2009 HIGHER SCHOOL CERTIFICATE**

✓	<i>Do your students who complete the Higher School Certificate in 2009 meet the following pattern of study requirements?</i>
	At least 12 units of Preliminary courses and 10 units of HSC courses
	At least 2 units of a Board Developed Course in English – at both Preliminary and HSC level
	At least 4 subjects – at both Preliminary and HSC level
	At least 6 units of Board Developed Courses – at both Preliminary and HSC level
	At least 3 courses of 2 unit value or greater (Board Developed and/or Board Endorsed Courses) – at both Preliminary and HSC level
	A maximum of 6 Preliminary units and 6 HSC units from courses in Science [Ref: <i>ACE Manual</i> , Dec. 2005, Section 8.3.1.4, p.88]
	In the Preliminary study pattern, Senior Science cannot be studied in combination with Biology, Chemistry, Earth and Environmental Science or Physics. In the HSC study pattern, Senior Science can be studied in combination with Biology, Chemistry, Earth and Environmental Science or Physics. Students undertaking Senior Science in the HSC study pattern must have satisfactorily completed the Preliminary course in at least one Science course [Ref: <i>ACE Manual</i> , Dec. 2005, Section 8.3.1.4, p.88]
	Met eligibility requirements for the English (ESL) course [Ref: <i>ACE Manual</i> , Dec. 2005, Section 8.2.2.1, p.84]
	Met eligibility requirements for Continuers courses in languages where there are Background Speakers courses [Ref: <i>ACE Manual</i> , Dec. 2005, Section 8.2.2.2, p.84-86]
	Met eligibility requirements for Beginners courses in languages [Ref: <i>ACE Manual</i> , Dec. 2005, Section 8.2.2.3, p.86]
	Board Endorsed Courses have current endorsement
	Students are not enrolled in any Board Developed Course, Board Endorsed Course, TAFE delivered VET HSC Course or Board Endorsed Course combinations which are subject to Board exclusions. [For exclusions please see <i>ACE Manual</i> , Dec. 2005, Section 8.3, p.87-90, PLUS also check your school BEC decision letters or check for BEC decisions via <i>Schools Online</i> .]
REMINDERS	
	Students seeking a UAI (Universities Admission Index) in 2009 must complete at least 10 units of Board Developed Courses for which there are formal examinations conducted by the Board of Studies, including (a) at least 2 units of English, and (b) at least 8 units of Category A courses. Courses completed must include at least three Board Developed Courses of 2 units or greater and at least four subjects. NB: Board Endorsed Courses and Content Endorsed Courses, including vocational Content Endorsed Courses, do not satisfy requirements for a UAI.
	Schools should note that additional Departmental curriculum requirements (e.g. sport, religious education, 25 hours of PD/H/PE etc) or conditions of enrolment at individual schools are not requirements for Higher School Certificate credentialing as determined by the Board of Studies as the statutory Higher School Certificate credentialing authority.
	Schools will need to ensure that Board requirements are met in cases of accumulation, acceleration, repeating, recognition of prior learning and in any cases of non-completion of course requirements. [Please refer to <i>ACE Manual</i> , Dec. 2005, Section 8 for details.]
	Students with special education needs can meet the requirements for the award of the Higher School Certificate by undertaking a combination of Board Developed Courses, Board Endorsed Courses and/or Stage 6 Life Skills Courses. Principals will be required to certify on the Preliminary and HSC entry forms that enrolment of a student in any Life Skills Courses for Stage 6 is the result of a planning process that addresses the student's transition from school to adult life. [Please refer to the <i>ACE Manual</i> , Dec. 2005, Section 7, p.73-77.]

SCHOOL-BASED MONITORING PROCESSES FOR NEW SOUTH WALES HIGHER SCHOOL CERTIFICATE

In accordance with Board of Studies' requirements all senior students must be issued with the booklets *Studying for the NSW Higher School Certificate: An Information Booklet for Year 10 Students 2007* (June 2006) and *Rules and Procedures for 2009 Higher School Certificate Candidates* (October 2008).

Other procedures might include:

- providing head teachers and teachers of Year 11 and Year 12 with a copy of this memorandum and its attachments
- conducting a workshop for all Year 11 and Year 12 teachers based on the Higher School Certificate Monitoring Workshop developed by Hunter/Central Coast Region and provided to all regions at the start of Term 3 2006. This workshop includes a Higher School Certificate quiz, various Higher School Certificate scenarios and three handouts for head teachers and teachers.
- using the workshop handouts and poster from the Higher School Certificate Monitoring Workshop on Principles of HSC Monitoring and HSC Planning Matrix with head teachers and teachers of Year 11 and Year 12, as a basis for evaluation of current practices and long term action to enhance Higher School Certificate monitoring processes within the school
- providing all senior students with Attachments 1 and 2 from this memorandum
- displaying copies of the Higher School Certificate requirements in senior students' classrooms, study areas and the library
- checking individual student compliance with these requirements at least once each term in Years 11 and 12, and whenever Board of Studies' confirmation of entry documents are generated
- issuing students with printouts of their courses with variations to the approved pattern of study highlighted
- ensuring students have signed their Confirmation of Entry forms
- displaying copies of the English Prescribed Texts poster
- displaying copies of the Higher School Certificate Exam Timetable poster and issuing students with individual copies of the timetable
- encouraging students to use the Board of Studies *Students Online* service. This service provides access to:
 - personal information held by the Board of Studies
 - Higher School Certificate entry information
 - personalised examination timetables
 - personalised Advice Line Schedules
 - Higher School Certificate results.

BURWOOD GIRLS HIGH SCHOOL

HSC ASSESSMENT POLICY AND PROCEDURES

1. General Information

HSC assessment in Year 12 gives credit for consistent performance. It may assess aspects of the course that are not examined in the Higher School Certificate examination. Burwood Girls High School has developed a program that covers Board requirements, with complete fairness to students, and balance between courses. Students are required to be diligent and complete all tasks presented to them.

This assessment process will begin Term 4 of the preliminary year, and will finish one week before the Trial Higher School Certificate examinations (excepting practical tasks, LOTE speaking tasks and culmination of practical projects).

Not every piece of work completed will be part of the “assessment” mark, some work is set to practise skills so that the students can see how well they understand the topic. **All set work should be regarded as an essential course requirement**, even when it is not included as an assessment task. Students will automatically fail a course if they do not make a satisfactory attempt to complete assessable tasks with a weighting of over 50%.

Attendance at all timetabled lessons is an important step to fulfilling course requirements. The Principal may decide that a student’s attendance has made it impossible for course outcomes to be achieved. The Board of Studies suggests that absences greater than 15% make it difficult to satisfactorily complete a course.

Students may also be deemed not to have satisfactorily completed a course if there is sufficient evidence of:

- a) failure to complete experiences specified in the syllabus, eg fieldwork, oral presentations, assignments, practical work, participation in class;
- b) non-serious or trivial preparation for exams.

2. Notification of Assessment Results

Students are provided with information on their performance in each task (mark and / or rank). Students are NOT told their final school assessment mark, but will be given their progressive ranking. Students may collect the final Assessment Rank Order Notice on completion of their HSC exams.

3. Student Responsibilities

- YOU ARE RESPONSIBLE FOR YOUR OWN ASSESSMENT in a number of ways. If you act irresponsibly you may end up with a ZERO MARK (0).
- YOU MUST BE FAMILIAR with the assessment policies set out in this book for each subject you take.
- It is YOUR RESPONSIBILITY to:
 - (a) ATTEND SCHOOL, be AWARE OF DUE DATES for assessment tasks and complete tasks ON TIME. If you are absent for any number of days you must check with your teachers to see if any assessment tasks have been set on the FIRST DAY of your return to school.
 - (b) BE ON TIME to assessment tasks: you will NOT be given an extension of time. If you are late to any task held in school time or at the beginning of the day, then the

Deputy Principals or the Principal must verify that you have a LEGITIMATE reason for being later and give you a note to that effect.

- (c) BE PRESENT to do all in-school assessment tasks. This means being **PRESENT THE DAY BEFORE AND ALL DAY** that a task is due or that a task is set as an exam. **IT IS NOT PERMITTED TO TAKE DAYS OFF FROM SCHOOL IN ORDER TO COMPLETE AN ASSESSMENT TASK OR STUDY FOR A TEST.** If you miss lessons prior to Assessment Tasks you will be asked to explain your absence in writing and to accompany this with a medical certificate or other appropriate documentation (see "What happens if you miss a task?" on page 10). If you are absent you risk receiving a ZERO MARK for the task.
- (d) HAND IN any homework assessment task on time.

YOU MUST NOT under any circumstances leave a piece of work on a teacher's desk as no record will have been established of its presentation. Therefore any work not personally handed to the class teacher or a person nominated by the class teacher will be dealt with in the same manner as for failure to complete a task and a ZERO MARK will be awarded accordingly. Friends are NOT to hand in your task.

If absent on the day a task is due, it is the student's responsibility to contact the teacher or Head Teacher of the faculty (9747 3355) ON THE FIRST DAY OF ABSENCE.

- (e) BRING A MEDICAL CERTIFICATE or other documentation justifying your absence to your teacher (and a copy to the front office) on your FIRST DAY back at school if you are absent for an assessment test or are absent on the day a task is due. Back-dated medical certificates are not acceptable. Students who habitually present doctors' certificates for assessment tasks will be deemed to be non-serious students unless the school is aware of a prior medical condition. On return to school submit "Illness, Accident or Misadventure Application" form (see Appendix) to the subject teacher with medical certificate, which will be referred to the Assessment Committee.
- (f) NOTIFY your teacher of any assessment problems **in advance**, if possible. If you are ill on the day of an assessment task or have suffered a misadventure immediately prior to the day of an assessment task, you must inform the teacher on the day of the task **before** the task begins. Illness/misadventure forms must be submitted to the teacher, supported by a doctor's certificate, within 48 hours.
- (g) CHECK THE MARKING of each task when it is returned to you.
- (h) CHECK YOUR ASSESSMENT RANK when it is given to you from time to time.
- (i) REFER to the Board of Studies website for current course information, including course outcomes - www.boardofstudies.nsw.edu.au/syllabus_hsc.

Some prolonged absences, eg a holiday overseas, cannot be taken into account and could lead to you not meeting outcomes in that subject. You must seek approval from the Principal before you take your leave.

4. Assessment Task Procedures

- You will be given at least **2 weeks notice in writing** of any assessment task. All the class will be asked to sign a "record of issue/collection of task" form stating the date and time of day the task is due. It is up to you to abide by the guidelines set out in this assessment booklet.

- Assessment tasks must be submitted on the due date. A zero mark will be awarded for work submitted late, unless a **doctor's certificate** or exceptional circumstances deemed acceptable by the Head Teacher are supplied (in writing).
- It is your responsibility to see your teacher as soon as practicable on the morning of your return to school to hand in the task or to arrange to complete a missed in-class task. The teacher and Head Teacher of the course will decide what sort of task will need to be submitted, eg an alternative task or the original task.
- The deputy principal in exceptional circumstances may authorise an **estimate** to be given for a missed task.
- You will be awarded a **zero mark** for an assessment task/examination if you have **cheated**, submitted a **non-serious attempt**, plagiarised or committed any other form of malpractice.
- If you are completing **compulsory work placement** you will not be disadvantaged. If there is sufficient time prior to commencing work placement the task can be submitted early or handed in by another person on the due date. It is your responsibility to notify your teacher and Head Teacher once you are aware that you will be on work placement when the task is due. A new date may be set by the Head Teacher which should be recorded on the "record of issue/collection" form.
- If you are involved in **knockout sport** you must notify your teacher and Head Teacher as soon as you are aware of the clash of dates. Permission to attend the knockout game will be at the discretion of the Head Teacher and Head Teacher PDHPE. You may be given the option of completing the task prior to competing in the knockout game or, if it is a research task, you need to arrange for it to be handed in to your teacher on the required day.
- If you choose to prepare and produce work with the use of **computer technology** it is your responsibility to ensure a hard copy is made well in advance of the due date. Computer and associated technology malfunction, even theft, without evidence of "work in progress" is **not a reason for late submission**.
- If you believe a task has been incorrectly marked you should discuss the matter with the class teacher concerned as soon as you receive the task back. Dissent about a mark which a teacher has determined is **NOT** grounds for appeal.
- If you believe you have been unfairly treated in being awarded a **zero** mark for an assessment task you may seek clarification from the Head Teacher of the course or go through the appeals process on page 10.

5. Unsatisfactory Completion of Course

- If you fail to satisfy minimum course requirements you will be awarded an 'N' determination. This means you have failed the course and it will not count towards the HSC. (You must complete at least 12 preliminary units + 10 HSC units.)
- **What should 'N' Award letters be written for?**
 - (a) **Failure to submit assessable tasks.** Assessable tasks are those in the assessment booklet.
 - (b) **Lack of diligence.** This is when a student has failed to complete a significant amount of non-assessable work such as class work, homework, practical work and other learning tasks the teacher has assigned – a genuine attempt must be made of all tasks.

- (c) **Not completing the prescribed course.** This is most obvious when the student has poor attendance and misses a large amount of lessons. When student's absences exceed 15% they may be considered as not adequately completing the course.

6. What Happens If You Miss A Task?

IT IS VERY IMPORTANT that you be in attendance when assessment tasks are scheduled. Failure to complete a task without adequate reason will result in a ZERO MARK being awarded for the task.

UNAVOIDABLE ABSENCES caused by illness or misadventure must be explained IN WRITING and accompanied by a MEDICAL CERTIFICATE or other APPROPRIATE DOCUMENTATION. This documentation must be submitted on the FIRST DAY of return to school to the Head Teacher or teacher in charge of the task. (Copies of documentation of absence to be also handed to the front office.) You must also contact the teacher or Head Teacher of the faculty on the first day of the absence (9747 3355).

- a) **Medical certificates/other documentation MUST be issued by a qualified medical practitioner, preferably your family doctor or specialist.**
- b) The certificate/document should clearly state the nature of the condition/circumstance and how this might be expected to affect your performance.
- c) The certificate/document should also cover the ENTIRE PERIOD OF YOUR ABSENCE. For example, if you are absent on the day of the task, the day before and the day after as well, your certificate/document must cover all three days.
- d) The school reserves the right to check all certificates/documentation submitted and will on occasion make contact with the doctor/s concerned.

7. Cheating or Malpractice

All assessment tasks must be:

- a) YOUR OWN ORIGINAL WORK. You cannot submit a task which is the same as another student's task. You may work on a task with a friend, relative, etc but the final copy must be in your own words, ie it must be YOUR OWN INTERPRETATION of the task. Failure to comply with this will lead to the award of a ZERO MARK.
- b) Completed in the current assessment period. You may not hand in a task or part of a task completed for another assignment in this or previous years. Students found to have committed this form of malpractice will be awarded a ZERO MARK.

In situations where it is established that the student has copied from another student or misrepresented work copied from a source or committed any other type of malpractice then a ZERO MARK will be given for the task.

The Head Teacher in consultation with the class teacher will establish that malpractice has occurred. Parents/guardians will be advised in writing.

8. Reviews and Appeals

Students may request a school review if:

- (a) they believe their final rank (as issued by the Board of Studies) is different from the position obtained in the course, or
- (b) they believe that the school did not follow the procedures stated in the assessment program for that subject

The request for review must be made within three days of the issue of assessment ranks.

The way marks were awarded by the teacher for assessment tasks will not be subject to review.

The school review panel will consist of the Principal or Deputy Principal, the Head Teacher concerned, and one other Head Teacher.

The Year Adviser may act as student advocate in these cases. A student who is dissatisfied with the school's review procedures may appeal to the Board.

9. Information and Advice

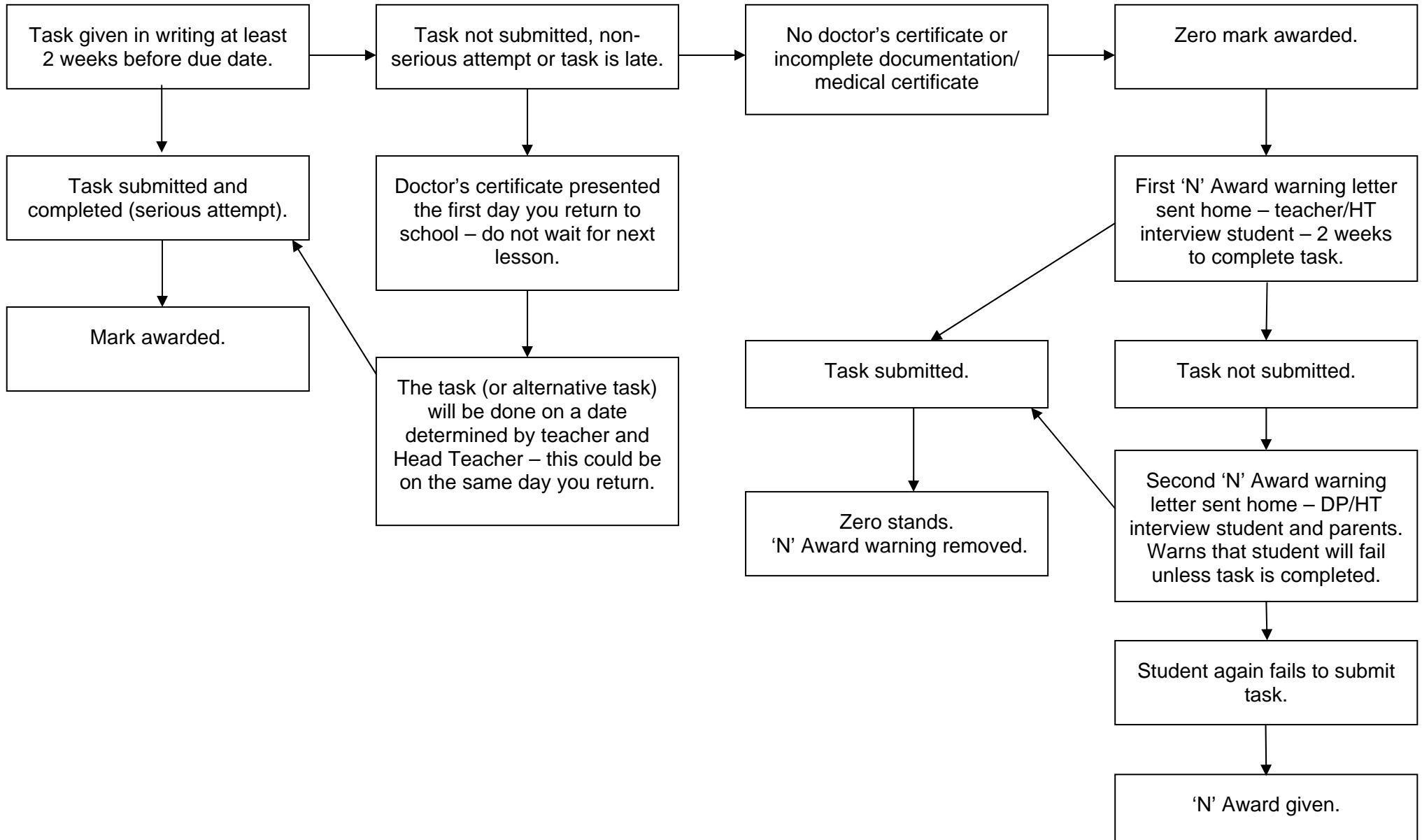
Advice on assessment is available from:

- The Assessment Co-ordinator
- The Head Teacher of the Faculty concerned
- The Careers Adviser
- The Student Adviser

Information is located:

- Board documents – with the Principal or Assessment Co-ordinator
- Board of Studies website – www.boardofstudies.nsw.edu.au
- Rules and Procedures for Higher School Certificate Candidates - Board of Studies booklet issued to each student
- School Assessment Policy
- HSC Assessment Policy and Procedures – spare copies with the Student Adviser, Deputy Principal
- Faculty Assessment Program – with the Faculty concerned; copy with the Principal

ASSESSMENT TASK FLOW CHART



GLOSSARY OF KEY WORDS

Syllabus outcomes, objectives, performance bands and examination questions have key words that state what students are expected to be able to do. A glossary of key words has been developed to help provide a common language and consistent meaning in the Higher School Certificate documents.

Using the glossary will help teachers and students understand what is expected in responses to examinations and assessment tasks.

Account	Account for: state reasons for, report on. Give an account of: narrate a series of events or transactions
Analyse	Identify components and the relationship between them; draw out and relate implications
Apply	Use, utilise, employ in a particular situation
Appreciate	Make a judgement about the value of
Assess	Make a judgement of value, quality, outcomes, results or size
Calculate	Ascertain/determine from given facts, figures or information
Clarify	Make clear or plain
Classify	Arrange or include in classes/categories
Compare	Show how things are similar or different
Construct	Make; build; put together items or arguments
Contrast	Show how things are different or opposite
Critically (analyse/evaluate)	Add a degree or level of accuracy depth, knowledge and understanding, logic, questioning, reflection and quality to (analyse/evaluate)
Deduce	Draw conclusions
Define	State meaning and identify essential qualities
Demonstrate	Show by example
Describe	Provide characteristics and features
Discuss	Identify issues and provide points for and/or against
Distinguish	Recognise or note/indicate as being distinct or different from; to note differences between
Evaluate	Make a judgement based on criteria; determine the value of
Examine	Inquire into
Explain	Relate cause and effect; make the relationships between things evident; provide why and/or how
Extract	Choose relevant and/or appropriate details
Extrapolate	Infer from what is known
Identify	Recognise and name
Interpret	Draw meaning from
Investigate	Plan, inquire into and draw conclusions about
Justify	Support an argument or conclusion
Outline	Sketch in general terms; indicate the main features of
Predict	Suggest what may happen based on available information
Propose	Put forward (for example a point of view, idea, argument, suggestion) for consideration or action
Recall	Present remembered ideas, facts or experiences
Recommend	Provide reasons in favour
Recount	Retell a series of events
Summarise	Express, concisely, the relevant details
Synthesise	Putting together various elements to make a whole



BURWOOD GIRLS HIGH SCHOOL

Example

ILLNESS, ACCIDENT OR MISADVENTURE APPLICATION

To be completed by student, and handed to Teacher for Head Teacher.

STUDENT'S NAME: _____

SUBJECT: _____

TEACHER'S NAME: _____ CLASS: _____

NATURE OF ASSESSMENT: _____
(State whether Examination, Topic or Unit Test, Assignment, Research Activity, Practical Exercise, Practical Test, Field Work, Other.)

DATE TASK DUE: _____

DATE THAT THE TASK WILL BE COMPLETED: _____

NATURE OF ABSENCE: _____

(State sufficient details to support your case for consideration to sit for task or substitute task or to gain an extension.)

MEDICAL CERTIFICATE FROM: _____ (Name of doctor)

OR NATURE OF OTHER VERIFICATION (eg. funeral notice from newspaper etc.)

STUDENT'S SIGNATURE: _____ DATE: _____

TEACHER'S COMMENT:

ASSESSMENT COMMITTEE'S RECOMMENDATION:

PRINCIPAL'S SIGNATURE: _____ DATE: _____

Burwood Girls High School

Centre of Excellence



Sample letter: Official Warning of 'N' Determination (HSC)

Queen Street
Croydon NSW 2132

P +61 2 9747 3355
F +61 2 9744 2797

burwoodg-h.school@det.nsw.edu.au
www.burwoodg-h.schools.nsw.edu.au

Dear

Re: OFFICIAL WARNING – Non-completion of a Higher School Certificate Course.

I am writing to advise that your daughter is in danger of not meeting the Course Completion Criteria for the Higher School Certificate in

The Board of Studies requires schools to issue students with official warnings in order to give them the opportunity to redeem themselves.

Please regard this letter as the **official warning** we have issued concerning A minimum of two course-specific warnings must be issued prior to a final 'N' determination being made for a course.

Course Completion Criteria

Where it is determined that a student has not met the Course Completion Criteria, they place themselves at risk of receiving an 'N' (non-completion of course) determination. An 'N' determination will mean that the course will not be listed on the student's Record of Achievement.

In Year 12, students must make a genuine attempt at assessment tasks that contribute in excess of 50% of available marks. Completion of tasks worth exactly 50% is not sufficient; tasks worth in excess of 50% must be completed.

To date, has not satisfactorily met of the Course Completion Criteria*.

The following table lists those tasks, requirements or outcomes not yet completed or achieved, and/or for which a genuine attempt has not been made. In order for to satisfy the Course Completion Criteria, the following tasks, requirements or outcomes need to be satisfactorily completed/achieved.

Task Name/ Course Requirement/ Course Outcome	Date Task Initially Due (if applicable)	Action Required by Student	Date to be Completed By (if applicable)

*Course Completion Criteria

The satisfactory completion of a course requires principals to have sufficient evidence that the student has:

- a) **followed** the course developed or endorsed by the Board; and
- b) **applied** themselves with diligence and sustained effort to the set tasks and experiences provided in the course by the school; and
- c) **achieved** some or all of the course outcomes.

Comments:

Please discuss this matter with and contact the school if further information or clarification is needed.

Yours sincerely,

.....
Class Teacher / Head Teacher

.....
Principal

Date

Please detach this section and return to school

Requirements for the satisfactory completion of a Higher School Certificate Course

- I have received the letter dated indicating that is in danger of not having satisfactorily completed
- I am aware that this course may not appear on her Higher School Certificate Record of Achievement.
- I am also aware that the 'N' determination may make her ineligible for the award of the Higher School Certificate.

Parent/Guardian's signature:Date:

Student's signature: Date:

2) SUBJECT INFORMATION

ANCIENT HISTORY HSC COURSE 2009

ASSESSMENT COMPONENTS AND WEIGHTINGS

ANCIENT HISTORY		
COMPONENTS		WEIGHTING %
<u>No.</u>		
1.	Core: The Cities of Vesuvius	25
2.	Period: NK Egypt to Death of Thutmose IV	25
3.	Personality: Hatshepsut	25
4.	Society: Athens	25
	Total	100

These components will be assessed in the following manner:

ASSESSMENT TASKS

Task No.	Due	Assessment Task Description	Components	Marks/Value	Total %
1.	T4 W8	Cities of Vesuvius: Research + Oral	1	5,10	15
2.	T1 W9	NKE to Thut IV: Research + Source Analysis	2	10,5	15
3.	T2 W9	Hatshepsut: Research + Source Analysis	3	5,10	15
4.	T3 W2	Athens: Research + Source Analysis	4	5,10	15
5.	T3 W4,5	Trial HSC	1,2,3,4	40	40
					100

BIOLOGY
HSC COURSE 2009

ASSESSMENT COMPONENTS AND WEIGHTINGS

BIOLOGY		
COMPONENTS		WEIGHTING %
<u>No.</u>		
1.	Knowledge and understanding	40
2.	Skills in planning and conducting first-hand investigations	30
3.	Skills in scientific thinking and problem solving	30
	Total	100

These components will be assessed in the following manner:

ASSESSMENT TASKS

Task No.	Due	Assessment Task Description	Components	Marks/Value	Total %
1.	T4 W8	Practical/Theory	1,2,3	10,10,5	25
2.	T1 W6	Practical/Theory	1,2,3	10,10,5	25
3.	T2 W3	Research	1,3	5,15	20
4.	T3 W4,5	Trial HSC	1,2,3	15,10,5	30
					100

BUSINESS STUDIES HSC COURSE 2009

ASSESSMENT COMPONENTS AND WEIGHTINGS

BUSINESS STUDIES		
COMPONENTS		WEIGHTING %
<u>No.</u>		
1.	Tests Types	50
2.	Case Studies	30
3.	Stimulus	20
	Total	100

These components will be assessed in the following manner:

ASSESSMENT TASKS

Task No.	Due	Assessment Task Description	Components	Marks/Value	Total %
1.	T4 W9	Management Test	1	20	20
2.	T1 W5	Marketing Plan	2	15	15
3.	T2 W1	Analysis - financial information	3	15	15
4.	T3 W1	Case Study – Global/Employment Relations	2,3	15,5	20
5.	T3 W4,5	Trial HSC	1	30	30
					100

CHEMISTRY
HSC COURSE 2009

ASSESSMENT COMPONENTS AND WEIGHTINGS

CHEMISTRY		
COMPONENTS		WEIGHTING %
<u>No.</u>		
1.	Knowledge and understanding	40
2.	Skills in planning and conducting first-hand investigations	30
3.	Skills in scientific thinking and problem solving	30
	Total	100

These components will be assessed in the following manner:

ASSESSMENT TASKS

Task No.	Due	Assessment Task Description	Components	Marks/Value	Total %
1.	T4 W8	Open-ended Investigation	2,3	10,20	30
2.	T1 W8	Test	1	20	20
3.	T2 W6	Practical	2	20	20
4.	T3 W4,5	Trial HSC Examination	1,3	20,10	30
					100

CHINESE BACKGROUND SPEAKERS HSC COURSE 2009

ASSESSMENT COMPONENTS AND WEIGHTINGS

CHINESE BACKGROUND SPEAKERS		
COMPONENTS		WEIGHTING %
<u>No.</u>		
1.	Spoken exchanges in Chinese	10
2.	Written exchanges in Chinese	10
3.	Listening and Responding	20
4.	Reading and Responding	40
5.	Writing in Chinese	20
	Total	100

These components will be assessed in the following manner:

ASSESSMENT TASKS

Task No.	Due	Assessment Task Description	Components	Marks/Value	Total %
1.	T4 W8	Listening and Reading and Responding	3,4	10,20	15
2.	T1 W6	Spoken and Written Exchanges	1,2	10,10	20
3.	T2 W8	Listening and Responding, Reading and Responding, Writing in Chinese	3,4,5	10,20,20	25
4.	T3 W4,5	Trial HSC			
		- Listening and Responding	3	20	10
		- Reading and Responding	4	55	20
		- Writing	5	25	10
					100

CHINESE CONTINUERS

HSC COURSE 2009

ASSESSMENT COMPONENTS AND WEIGHTINGS

CHINESE CONTINUERS		
COMPONENTS		WEIGHTING %
<u>No.</u>		
1.	Speaking	20
2.	Listening and Responding	25
3.	Reading and Responding	40
4.	Writing in Chinese	15
	Total	100

These components will be assessed in the following manner:

ASSESSMENT TASKS

Task No.	Due	Assessment Task Description	Components	Marks/ Value	Total %
1.	T4 W7	Speaking/Reading & Responding A	1,3	10,12.5	13.5
2.	T1 W6	Listening/Reading & Responding B	2,3	12.5,15	16.5
3.	T2 W3	Listening/Reading & Responding A, Writing	2,3,4	12.5,12.5,7.5	19.5
4.	T3 W2	Speaking/Writing	1,4	10,7.5	10.5
5.	T3 W4,5	Trial HSC			
		- Speaking	1	20	
		- Listening & Responding	2	25	
		- Reading & Responding A & B	3	40	
		- Writing	4	15	40
					100

CHINESE EXTENSION 1 UNIT
HSC COURSE 2009

ASSESSMENT COMPONENTS AND WEIGHTINGS

CHINESE EXTENSION 1 UNIT		
COMPONENTS		WEIGHTING %
<u>No.</u>		
1.	Speaking	10
2.	Analysis of Written Text A & B	20
3.	Response to Aural Text	10
4.	Writing	10
	Total	50

These components will be assessed in the following manner:

ASSESSMENT TASKS

Task No.	Due	Assessment Task Description	Components	Marks/ Value	Total %
1.	T1 W7	Response to Aural Text	3	10	10
2.	T2 W5	Analysis of Text A & B/Response to Aural Text & Writing	2,3,4	20,10,10	40
3.	T3 W2	Speaking	1	10	10
4.	T3 W4,5	Trial HSC			
		- Speaking	1	10	10
		- Analysis of Written Text A & B	2	20	20
		- Written	3	10	10
					100

COMMUNITY AND FAMILY STUDIES HSC COURSE 2009

ASSESSMENT COMPONENTS AND WEIGHTINGS

COMMUNITY AND FAMILY STUDIES		
COMPONENTS		WEIGHTING %
<u>No.</u>		
1.	Research Methodologies	25
2.	Groups in context	25
3.	Parenting and caring	25
4.	Individuals and work	25
	Total	100

These components will be assessed in the following manner:

ASSESSMENT TASKS

Task No.	Due	Assessment Task Description	Components	Marks/ Value	Total %
1.	T4 W7	Research methodologies IRP Plan	1	5	5
2.	T1 W11	IRP Diary	1	5	5
3.	T1 W11	IRP Product	1	10	10
4.	T2 W2	Groups in context Written report	2	20	20
5.	T2 W9	Parenting and caring research task	3	20	20
6.	T3 W2	In class Essay, Individuals & Work	4	20	20
7.	T3 W4,5	Trial HSC	1,2,3,4	5,5,5,5	20
					100

DANCE
HSC COURSE 2009

ASSESSMENT COMPONENTS AND WEIGHTINGS

DANCE		
COMPONENTS		WEIGHTING %
<u>No.</u>		
1.	Core Performance	20
2.	Core Composition	20
3.	Core Appreciation	20
4.	Major Study	40
	Total	100

These components will be assessed in the following manner:

ASSESSMENT TASKS

Task No.	Due	Assessment Task Description	Components	Marks/ Value	Total %
1.	T4 W7	Core Appreciation	1	10	10
2.	T1	Core Composition	2	10	10
		Major Study	4	20	20
3.	T2	Core Performance	3	10	10
		Trial Exam for:			
		Core Performance	1	10	10
		Core Composition	2	10	10
		*Major Study (Performance OR Composition)	4	20	20
4.	T3	Trial Exam for:			
		Core Appreciation	3	10	10
		*Major Study (Appreciation OR Video OR Technology)	4	20	20

*Students do one of these, not both.

DRAMA HSC COURSE 2009

ASSESSMENT COMPONENTS AND WEIGHTINGS

DRAMA		
COMPONENTS		WEIGHTING %
<u>No.</u>		
1.	Studies and Drama and Theatre	30
2.	Australian Drama and Theatre	30
3.	Group Performance	20
4.	Individual Project	20
	Total	100

These components will be assessed in the following manner:

ASSESSMENT TASKS

Task No.	Due	Assessment Task Description	Components	Marks/Value	Total %
1.	T4 W6	Texts and Research in Workshop	1	30	20
2.	T1 W6	Extended Response	2	20	20
3.	T1 W8 + T2 W2	Individual Project: Work in Progress	4	30	15
4.	T2 W10	Group Project: Work in Progress	3	30	20
5.	T3 W4,5	Trial HSC Examination	1,2,3,4	100	30
					100

ECONOMICS HSC COURSE 2009

ASSESSMENT COMPONENTS AND WEIGHTINGS

ECONOMICS		
COMPONENTS		WEIGHTING %
<u>No.</u>		
1.	Tests/Exams	50
2.	Stimulus/Skills	20
3.	Research/Investigation/Communication	30
	Total	100

These components will be assessed in the following manner:

ASSESSMENT TASKS

Task No.	Due	Assessment Task Description	Components	Marks/Value	Total %
1.	T4 W8	Topic Test	1,2	20	20
2.	T1 W8/9	Stimulus Test	2	20	20
3.	T2 W5	Research	3	20	20
4.	T2 W10	Topic Essay	3	20	20
5.	T3 W4,5	Trial HSC Examination	1	20	20
					100

ENGLISH ADVANCED
HSC COURSE 2009

ASSESSMENT COMPONENTS AND WEIGHTINGS

ENGLISH ADVANCED		
COMPONENTS		WEIGHTING %
<u>No.</u>		
1.	Area of Study: Belonging	20
2.	Module A: Comparative Study of Texts	20
3.	Module B: Critical Study of Texts	20
4.	Module C: Representation of Texts	40
	Total	100

These components will be assessed in the following manner:

ASSESSMENT TASKS

Task No.	Due	Assessment Task Description	Components	Marks/Value	Total %
1.	T4 W8	Listening Task	1	15	15
2.	T1 W2	Reading Task	1	15	10
3.	T1 W8	Speaking Task	3	20	15
4.	T2 W3	Writing, Viewing/Representing Task	2	35	15
5.	T2 W10	Extended Response	4	20	15
6.	T3 W4,5	Trial HSC Examination	1,2,3,4	105	30
					100

**ENGLISH ESL
HSC COURSE 2009**

ASSESSMENT COMPONENTS AND WEIGHTINGS

ENGLISH ESL		
COMPONENTS		WEIGHTING %
<u>No.</u>		
1.	Area of Study: Belonging	50
2.	Module A: Experience through Language	25
3.	Module B: Texts and Society	25
	Total	100

These components will be assessed in the following manner:

ASSESSMENT TASKS

Task No.	Due	Assessment Task Description	Components	Marks/Value	Total %
1.	T4 W8	Speaking, Viewing/Representing Task	3	20	15
2.	T1 W8	Listening and Reading Task	1	15	20
3.	T2 W3	Writing Task	1	15	15
4.	T2 W10	Speaking Task	3	20	20
5.	T3 W4,5	Trial HSC Examination	1,2,3	100	30
					100

ENGLISH EXTENSION 1
HSC COURSE 2009

ASSESSMENT COMPONENTS AND WEIGHTINGS

ENGLISH EXTENSION 1		
COMPONENT		WEIGHTING
<u>No.</u>		
1.	Identifies and evaluates conventions of Romanticism	10
2.	Explains different ways of valuing texts	10
3.	Composes personal, imaginative and critical extended responses	30
	Total	50

These components will be assessed in the following manner:

ASSESSMENT TASKS

Task No.	Due	Assessment Task Description	Components	Marks/Value	Total %
1.	T4 W6	Listening and Viewing/Representing Task	1,2,3	25	20
2.	T1 W6	Speaking and Viewing/Representing Task	1,2,3	25	20
3.	T2 W2	Reading/Writing Task	1,2,3	25	20
4.	T3 W4,5	Trial HSC	1,2,3	50	40
					100

ENGLISH EXTENSION 2
HSC COURSE 2009

ASSESSMENT COMPONENTS AND WEIGHTINGS

ENGLISH EXTENSION 2		
COMPONENTS		WEIGHTING
<u>No.</u>		
1.	Proposal	10
2.	Viva Voce	20
3.	Report	20
	Total	50

These components will be assessed in the following manner:

ASSESSMENT TASKS

Task No.	Due	Assessment Task Description	Components	Marks/Value	Total %
1.	T1 W3	Final presentation of written proposal for Major Work	1	10	20
2.	T2 W2	Interview and discussion of Major Work in progress	2	20	40
3.	T2 W6	Written report on the impact of independent investigation on the creation of the Major Work	3	20	40
					100

ENGLISH STANDARD
HSC COURSE 2009

ASSESSMENT COMPONENTS AND WEIGHTINGS

ENGLISH STANDARD		
COMPONENTS		WEIGHTING %
<u>No.</u>		
1.	Area of Study: Belonging	20
2.	Module A: Experience through Language	20
3.	Module B: Close Study of Text	20
4.	Module C: Texts and Society	40
	Total	100

These components will be assessed in the following manner:

ASSESSMENT TASKS

Task No.	Due	Assessment Task Description	Components	Marks/Value	Total %
1.	T4 W8	Listening Task	1	15	15
2.	T1 W2	Reading Task	1	15	10
3.	T1 W8	Speaking Task	3	20	15
4.	T2 W3	Writing, Viewing/Representing Task	2	35	15
5.	T2 W10	Extended Response	4	20	15
6.	T3 W4,5	Trial HSC Examination	1,2,3,4	105	30
					100

EXPLORING EARLY CHILDHOOD
HSC COURSE 2009
(Content Endorsed Course)

ASSESSMENT COMPONENTS AND WEIGHTINGS

EXPLORING EARLY CHILDHOOD		
COMPONENTS		WEIGHTING %
<u>No.</u>		
1.	Knowledge and Understanding	50
2.	Skills	50
	Total	100

These components will be assessed in the following manner:

ASSESSMENT TASKS

Task No.	Due	Assessment Task Description	Components	Marks/Value	Total %
1.	T4 W7	Baby Diary	1	25	25
2.	T1 W8/9	Children's Literature Book	1,2	25	25
3.	T2 W6	Food and Nutrition research and practical	1,2	25	25
4.	T3 W4,5	Trial HSC Examination	1	25	25
					100

EXTENSION HISTORY HSC COURSE 2009

ASSESSMENT COMPONENTS AND WEIGHTINGS

EXTENSION HISTORY		
COMPONENTS		WEIGHTING %
<u>No.</u>		
1.	Historiography	20
2.	History Project	80
	Total	100

These components will be assessed in the following manner:

ASSESSMENT TASKS

Task No.	Due	Assessment Task Description	Components	Marks/Value	Total %
1.	T4 W9	Project Proposal	2	5	5
2.	T1 W7	In Class Essay	2	15	15
3.	T2 W8	Process Log	2	5	5
4.	T2 W10	Personal Interest Essay (due)	2	55	55
5.	T3 W4,5	Trial HSC	1	20	20
					100

FOOD TECHNOLOGY
HSC COURSE 2009

ASSESSMENT COMPONENTS AND WEIGHTINGS

FOOD TECHNOLOGY		
COMPONENTS		WEIGHTING %
<u>No.</u>		
1.	Experimentation and Preparation	30
2.	Research, analysis and communication	30
3.	Design, implementation and evaluation	20
4.	Knowledge and Understanding	20
	Total	100

These components will be assessed in the following manner:

ASSESSMENT TASKS

Task No.	Due	Assessment Task Description	Components	Marks	Total %
1.	T4 W8	Written Report – In-depth study of food organization	2	10	20
2.	T1 W10	Food Preservation Experiments and Written Report	1	15	20
3.	T2 W8	Food Product Development - Written - Practical - Oral	1,2,3	5,15,10	30
4.	T3 W4,5	Trial HSC Examination	4	20	30
					100

FRENCH CONTINUERS

HSC COURSE 2009

ASSESSMENT COMPONENTS AND WEIGHTINGS

FRENCH CONTINUERS		
COMPONENTS		WEIGHTING %
<u>No.</u>		
1.	Speaking	20
2.	Listening and Responding	25
3.	Reading and Responding Parts A & B	40
4.	Writing in French	15
	Total	100

These components will be assessed in the following manner:

ASSESSMENT TASKS

Task No.	Due	Assessment Task Description	Components	Marks	Total %
1.	T4 W8	Listening/Reading B	2,4	12.5,7.5	12
2.	T1 W5	Speaking/Writing	1,3B	10,7.5	10.5
3.	T1 W11	Reading A/Reading B	3A,4	12.5,7.5	12
4.	T2 W5	Listening/Writing	2,3B	12.5,7.5	12
5.	T2 W10	Speaking/Reading A	1,3A	10,12.5	13.5
6.	T3 W4,5	Trial HSC			
		- Speaking	1	20	
		- Listening & Responding	2	25	
		- Reading & Responding A & B	3	40	
		- Writing	4	15	40
					100

FRENCH EXTENSION 1 UNIT
HSC COURSE 2009

ASSESSMENT COMPONENTS AND WEIGHTINGS

FRENCH EXTENSION 1 UNIT		
COMPONENTS		WEIGHTING %
<u>No.</u>		
1.	Listening	10
2.	Analysis of Text/Response to Text	20
3.	Writing	10
4.	Speaking	10
	Total	50

These components will be assessed in the following manner:

ASSESSMENT TASKS

Task No.	Due	Assessment Task Description	Components	Marks	Total %
1.	T1 W5	Analysis of Text/Response to Text	2A,2B	10,10	
2.	T1 W10	Listening & Responding	1	10	
3.	T2 W6	Writing Skills	3	10	
4.	T2 W9	Speaking Skills	4	10	60
5.	T3 W4,5	Trial HSC - Analysis of Text - Response to Text - Writing - Speaking - Listening & Responding	2A 2B 3 4 5	10 10 10 10 10	40
				Total	100

GENERAL MATHEMATICS HSC COURSE 2009

The school assessment may use up to 30% of the preliminary course.

ASSESSMENT COMPONENTS AND WEIGHTINGS

GENERAL MATHEMATICS – 2 UNIT		
COMPONENTS		WEIGHTING %
<u>No.</u>		
1.	Knowledge and Skills	40
2.	Applications	60
	Total	100

These components will be assessed in the following manner:

ASSESSMENT TASKS

Task No.	Due	Assessment Task Description	Components	Marks/Value	Total %
1.	T4 W8	Written Test	1,2	5,10	15
2.	T1 W11	Written Test	1,2	5,10	15
3.	T2 W9	Written Test	1,2	5,10	15
4.	T2 W9	Major Project Term 2	2	20	20
5.	T3 W4,5	Trial HSC	1,2	25,10	35
					100

VET HOSPITALITY OPERATIONS

HSC COURSE 2009

VET HOSPITALITY OPERATIONS

Method of Assessment

Hospitality Operations assessment in Years 11 and 12 is **competency based**.

This means that a student is assessed on their performance of knowledge or skills, which is required by **industry standards**.

Competency based assessment is largely activity-based and practical. However, competency also implies that an individual displays an understanding of the knowledge, which underpins the practical performance.

A student is deemed competent when they:

- carry out the task to an acceptable industry standard
- organise and manage a range of different tasks
- respond appropriately to a breakdown in routine
- apply existing knowledge and skills to new situations
- use communication and interpersonal skills that suit the work environment.

Students have the opportunity to attempt a task **three** times in order to fulfil the requirements of a competency. Students will be required to purchase their own ingredients for any make-up practical lessons.

Competency based assessment is **ongoing** however there will also be an assessment schedule as follows:

Task No.	Due	Assessment Task Description	Total %
1.	T4 W9	Written Test - Receive & Store Stock - Clean Premises & Equipment - Appetisers & Salads - Prepare Sandwiches	20
2.	T2 W7	Essay Question – Use Basic Methods of Cookery	30
3.	T3	Flow Charts – Implement Food Safety Procedures	20
4.	T3 W4,5	Trial HSC	30

It is important that students are prepared for their weekly competency assessment and are vigilant in their attendance so that students can meet the requirements.

The HSC exam is **optional** as not all students wish to achieve a UAI. If you wish to have a UAI at the end of the course you must sit for both the Trial HSC exam and the HSC exam.

NOTE: The first 6 core units and the first 4 units of the Commercial Cookery Strand are studied during the Preliminary year but are examined in the HSC.

The HSC and the Trial Examinations are based on the 6 Core Units and the 7 Commercial Cookery Units. These units are:

CORE SECTION

- THHHCO01B - Develop and Update Hospitality Industry Knowledge
- THHCOR01B - Work with Colleagues and Customers
- THHCOR02B - Work in a Socially Diverse Environment
- THHGHS01B - Follow Workplace Hygiene Procedures
- THHCOR03B - Follow Health, Safety and Security procedures
- THHGGA01B - Communicate on the Telephone

STRAND A – COMMERCIAL COOKERY

- THHBKA01B - Organise and Prepare Food
- THHBKA02B - Present Food
- THHGGA06B - Receive and Store Stock
- THHGHS02B - Clean Premises and Equipment
- THHCC01B - Use Basic Methods of Cookery
- THHBCC11B - Implement Food Safety Procedures
- THHBKA04B - Clean and Maintain Kitchen Premises

Other units studied but not directly examined in the Trial and HSC are:

- THHBCC00B - Prepare Sandwiches
- THHBCC02B - Prepare Appetisers and Salads
- THHCC03B - Prepare Stocks, Sauces and Soups

INDONESIAN CONTINUERS HSC COURSE 2009

ASSESSMENT COMPONENTS AND WEIGHTINGS

INDONESIAN CONTINUERS		
COMPONENTS		WEIGHTING %
<u>No.</u>		
1.	Speaking	20
2.	Listening and Responding	25
3.	Reading and Responding - Part A	25
	- Part B	15
4.	Writing in Indonesian	15
	Total	100

These components will be assessed in the following manner:

ASSESSMENT TASKS

Task No.	Due	Assessment Task Description	Components	Marks	Total %
1.	T4 W8	Listening/Reading + Responding A	2,3	6.25,12.5	11.25
2.	T1 W9	Listening/Reading + Responding B	2,3	6.25,15	12.75
3.	T2 W4	Listening/Reading + Responding A	2,3	6.25,12.5	11.25
4.	T2 W10	Listening/Writing	2,4	6.25,15	12.75
5.	T3 W2	Speaking	1	20	12.00
6.	T3 W4,5	Trial HSC			
		- Speaking	1	20	
		- Listening + Responding	2	25	
		- Reading + Responding A & B	3	40	
		- Writing	4	15	40
					100

INDONESIAN EXTENSION 1 UNIT
HSC COURSE 2009

ASSESSMENT COMPONENTS AND WEIGHTINGS

INDONESIAN EXTENSION 1 UNIT		
COMPONENTS		WEIGHTING %
<u>No.</u>		
1.	Listening	10
2.	Analysis of Text	20
3.	Writing	10
4.	Speaking	10
	Total	50

These components will be assessed in the following manner:

ASSESSMENT TASKS

Task No.	Due	Assessment Task Description	Components	Marks	Total %
1.	T1 W5	Analysis of Text	2	20	24
2.	T1 W10	Listening & Responding	2	20	12
3.	T2 W6	Writing Skills	3	10	12
4.	T2 W9	Speaking Skills	4	10	12
5.	T3 W4,5	Trial HSC - Analysis of Text - Response to Text - Writing - Speaking - Listening & Responding	2A 2B 3 4 1	10 10 10 10 10	40
					100

VET INFORMATION TECHNOLOGY HSC COURSE 2009

VET Information Technology Certificate III provides the skills and knowledge for an individual to be competent in introductory ICT 'technical' functions. It is designed to support information activities in the workplace and to achieve a degree of self-sufficiency as an advanced ICT 'user', giving employees a degree of confidence in an individual's usefulness in the workplace.

COMPULSORY Attempt ALL units	
Unit code	Unit title
BSBCMN106A	Follow workplace safety procedures
ICAU1128A	Operate a personal computer
ICAU2005A	Operate computer hardware
ICAU2006A	Operate computing packages
ICAD2012A	Design organisational documents using computing packages
ICAU3004A	Apply occupational health and safety procedures
ICAU2013A	Integrate commercial computing packages
ICAU2231A	Use computer operating system
ICAW2001A	Work effectively in an IT environment
ICAW2002A	Communicate in the workplace
ICAD3218A	Create user documentation
ICAI3020A	Install and optimise operating system software
ICAS3031A	Provide advice to clients
ICAS3234A	Care for computer hardware
ICAT3025A	Run standard diagnostic tests
ICAB4169A	Use development software and IT tools to build a basic website

- The table shows units studied in Preliminary 2008 (Units 1 – 10), and units to be studied in HSC 2009 (Units 11 – 16).
- Units in bold (Units 6 – 15) will be examined in the HSC. (Note that this includes 6 units from Preliminary.)
- The HSC exam for VET Information Technology is optional. The result from the HSC exam is used to contribute to the calculation of the UAI.
- The HSC exam is a 2 hour written paper.
- In addition to the HSC qualification, VET IT students are also accredited with a Statement of Attainment towards Certificate III IT (ICA30105).
- Students of VET IT who hold a particular interest in the industry are able to undertake a Specialisation Study. This consists of additional specialisation units, additional class and work placement hours. The completion of a Specialisation Study provides the student with a qualification of a Certificate III in IT (Specialisation Study).

ASSESSMENT TASKS

Task No.	Due	Units Assessed	Task Description	%
1	T4 W7	ICAW2001A Work effectively in an IT environment ICAW2002A Communicate in the workplace	Written test	20
2	T1 W6	ICAD3218A Create user documentation ICAI3020A Install and optimise operating system software (Part I)	Written test	20
3	T2 W6	ICAI3020A Install and optimise operating system software (Part II)	Presentation and/or demonstration	10
	T2 W8	ICAI3020A Install and optimise operating system software (Part III) ICAT3025A Care for computer hardware		10
4	T3 W4,5	Trial HSC All HSC examinable units (see table – bold)	2 Hour written paper	40

ITALIAN BEGINNERS
HSC COURSE 2009

ASSESSMENT COMPONENTS AND WEIGHTINGS

ITALIAN BEGINNERS		
COMPONENTS		WEIGHTING %
<u>No.</u>		
1.	Listening Skills – Aural Comprehension, the ability to understand spoken Italian	30
2.	Speaking Skills – Oral Communication, the ability to converse	20
3.	Reading Skills – the ability to understand written Italian	30
4.	Writing Skills – the ability to communicate written Italian	20
	Total	100

These components will be assessed in the following manner:

ASSESSMENT TASKS

Task No.	Due	Assessment Task Description	Components	Marks	Total %
1.	T4 W9	Reading and Writing	3,4	30,20	10
2.	T1 W7	Speaking and Listening	1,2	20,30	10
3.	T1 W8/9	Reading and Writing	3,4	30,20	10
4.	T2 W7	Speaking and Listening	1,2	20,30	10
5.	T2 W10	Reading and Writing	3,4	30,20	10
6.	T3 W3	Speaking and Listening	1,2	30,20	10
7.	T3 W4,5	Trial HSC			
		- Listening	1	30	
		- Speaking	2	20	
		- Reading	3	30	
		- Writing	4	20	40
					100

ITALIAN CONTINUERS HSC COURSE 2009

ASSESSMENT COMPONENTS AND WEIGHTINGS

ITALIAN CONTINUERS		
COMPONENTS		WEIGHTING %
<u>No.</u>		
1.	Speaking	20
2.	Listening and Responding	25
3.	Reading and Responding	40
4.	Writing in Italian	15
	Total	100

These components will be assessed in the following manner:

ASSESSMENT TASKS

Task No.	Due	Assessment Task Description	Components	Marks/Value	Total %
1.	T4 W8	Reading A/Writing	3,4	12.5,7.5	12
2.	T1 W10	Reading B/Listening/Speaking	3,2,1	7.5,12.5,10	18
3.	T2 W9	Reading A/Writing	3,4	12.5,7.5	12
4.	T3 W2	Reading B/Listening/Speaking	3,2,1	7.5,12.5,10	18
5.	T3 W4,5	Trial HSC - Speaking - Listening & Responding - Reading & Responding A & B - Writing	1 2 3 4	20 25 40 15	40
					100

ITALIAN EXTENSION 1 UNIT
HSC COURSE 2009

ASSESSMENT COMPONENTS AND WEIGHTINGS

ITALIAN EXTENSION 1 UNIT		
COMPONENTS		WEIGHTING %
<u>No.</u>		
1.	Listening	10
2.	Analysis of Text	20
3.	Writing	10
4.	Speaking	10
	Total	50

These components will be assessed in the following manner:

ASSESSMENT TASKS

Task No.	Due	Assessment Task Description	Components	Marks	Total %
1.	T1 W4	Analysis of Text	1	20	24
2.	T1 W10	Listening & Responding	2	10	12
3.	T2 W5	Writing Skills	3	10	12
4.	T2 W8	Speaking Skills	4	10	12
5.	T3 W4,5	Trial HSC			
		- Analysis of Text	2	10	
		- Response to Text	2A	10	
		- Writing	3	10	
		- Speaking	4	10	
		- Listening & Responding	5	10	40
					100

JAPANESE BEGINNERS

HSC COURSE 2009

ASSESSMENT COMPONENTS AND WEIGHTINGS

JAPANESE BEGINNERS		
COMPONENTS		WEIGHTING %
<u>No.</u>		
1.	Listening: Interacting and understanding texts	30
2.	Reading: Interacting and understanding texts	30
3.	Speaking: Interacting and producing texts	20
4.	Writing: Interacting and producing texts	20
	Total	100

These components will be assessed in the following manner:

ASSESSMENT TASKS

Task No.	Due	Assessment Task Description	Components	Marks	Total %
1.	T4 W9	Reading & Writing	2,4	30,20	10
2.	T1 W6	Speaking & Listening	3,1	20,30	10
3.	T1 W11	Reading & Writing	2,4	30,20	10
4.	T2 W8	Speaking & Listening	3,1	30,20	10
5.	T2 W9	Reading & Writing	2,4	20,30	10
6.	T3 W2	Speaking & Listening	3,1	30,20	10
7.	T3 W4,5	Trial HSC			
		- Listening	1	30	
		- Reading	2	30	
		- Speaking	3	20	
		- Writing	4	20	40
					100

LEGAL STUDIES HSC COURSE 2009

ASSESSMENT COMPONENTS AND WEIGHTINGS

LEGAL STUDIES		
TOPICS/COMPONENTS		WEIGHTING %
<u>No.</u>		
1.	Law and Society	25
2.	Crime	25
3.	Family	25
4.	World Order	25
	Total	100

These components will be assessed in the following manner:

ASSESSMENT TASKS

Task No.	Due	Assessment Task Description	Components	Marks/Value	Total %
1.	T4 W7/8	Test + Oral	1	10,10	20
2.	T1 W5	Topic Test	2	20	20
3.	T2 W4	Research/Essay	3	20	20
4.	T3 W2	Research/Essay	4	20	20
5.	T3 W4,5	Trial HSC	1,2,3,4	20	20
					100

MATHEMATICS 2 UNIT
HSC COURSE 2009

ASSESSMENT COMPONENTS AND WEIGHTINGS

MATHEMATICS – 2 UNIT		
COMPONENTS		WEIGHTING %
<u>No.</u>		
1.	Knowledge, Understanding and Skills	80
2.	Application	20
	Marks	100

These components will be assessed in the following manner:

ASSESSMENT TASKS

Task No.	Due	Assessment Task Description	Components	Marks/Value	Total %
1.	T4 W8	Written Test	1,2	18,4	22
2.	T1 W11	Written Test	1,2	18,4	22
3.	T2 W9	Written Test	1,2	18,4	22
4.	T3 W4,5	Trial HSC	1,2	26,8	34
					100

MATHEMATICS EXTENSION 1
HSC COURSE 2009

ASSESSMENT COMPONENTS AND WEIGHTINGS

MATHEMATICS EXTENSION 1 – 3 UNIT COMMON		
COMPONENTS		WEIGHTING %
<u>No.</u>		
1.	Knowledge, Understanding and Skills	70
2.	Application	30
	Marks	100

MATHEMATICS EXTENSION 1 – 3 UNIT ADDITIONAL		
COMPONENTS		WEIGHTING %
<u>No.</u>		
1.	Knowledge, Understanding and Skills	35
2.	Application	15
	Marks	50

These components will be assessed in the following manner:

ASSESSMENT TASKS

Task No.	Due	Assessment Task Description	Components	Marks/Value	Total %
1.	T4 W9	Written Test	1,2	10,5	15
2.	T1 W11	Written Test	1,2	15,10	25
3.	T2 W8	Written Test	1,2	15,10	25
4.	T3 W4,5	Trial HSC	1,2	25,10	35
					100

MATHEMATICS EXTENSION 2
HSC COURSE 2009

ASSESSMENT COMPONENTS AND WEIGHTINGS

MATHEMATICS EXTENSION 2 – 4 UNIT ADDITIONAL		
COMPONENTS		WEIGHTING %
<u>No.</u>		
1.	Knowledge, Understanding and Skills	60
2.	Application Marks	40 100

These components will be assessed in the following manner:

ASSESSMENT TASKS

Task No.	Due	Assessment Task Description	Components	Marks/Value	Total %
1.	T4 W9	Written Test	1,2	10,5	15
2.	T1 W11	Written Test	1,2	15,10	25
3.	T2 W9	Written Test	1,2	15,10	25
4.	T3 W4,5	Trial HSC	1,2	20,15	35
					100

MODERN HISTORY HSC COURSE 2009

ASSESSMENT COMPONENTS AND WEIGHTINGS

MODERN HISTORY		
COMPONENTS		WEIGHTING %
<u>No.</u>		
1.	Core: WW1 1914-1918	25
2.	National Study: Germany 1918-1939	25
3.	Personality in 20 th Century: Leni Riefenstahl	25
4.	Peace & Conflict Studies: Conflict in Indochina 1954-1979	25
	Total	100

These components will be assessed in the following manner:

ASSESSMENT TASKS

Task No.	Due	Assessment Task Description	Components	Marks/ Value	Total %
1.	T4 W7	WW1 1914-1918: Research + Oral	1	5,10	15
2.	T1 W8	Germany 1918-39: Research + Source Analysis	2	10,5	15
3.	T2 W6	Leni Riefenstahl: Research + Source Analysis	3	5,10	15
4.	T3 W2	Indochina: Research + Source Analysis	4	5,10	15
5.	T3 W4,5	Trial HSC	1,2,3,4	40	40
					100

MUSIC 1, MUSIC 2 HSC COURSES 2008

In HSC **Music 1 and Music 2** Courses, students study the **CONCEPTS** of Music, through the **LEARNING EXPERIENCES** (Composition, Aural, Musicology, Performance) with the **CONTEXT** of a range of styles, periods and genres.

In Music 1, students will study **THREE** topics from the list of contexts provided. Topics must differ from Year 11/Preliminary Topics. It is possible to select a topic studied in Year 11, which shows greater depth of understanding/explores new repertoire/shows comparative study.

TOPICS:	Topic 1: Music of the 20 th and 21 st Century. Topic 2: Music and the related arts Topic 3: An instrument and its repertoire	}	a possible combination
---------	----------------------------------------------------------------------------------------------------------------------------------------------------------	---	------------------------

In Music 2, the mandatory topic is music of the last 25 years (Australian focus) and one additional topic is selected from a list provided.

Music extension (performance, musicology or composition) is possible with this course – 3rd unit.

INTERNAL ASSESSMENT (50% OF FINAL HSC MARK) (Both courses)

All tasks in the course must be attempted in order to pass the course. Further details and requirements for each assessment will be provided at least 2 weeks prior.

MUSIC 1				
Task No.	Due	Assessment Task Description	Topic No.	Value
1.	T4 W9	Musicology: research and viva voce	1	10
2.	T1 W4	Composition & diary	1 or 2	5
3.	T1 W10	Performance: 2 pieces	1 and/or 2	10
4.	T2 W3	Aural: written paper in class	-	10
5.	T2 W8	Composition & diary	2 or 3	5
6.	T3 W2	Aural: written paper in class	-	15
7.	T3 W5	Internal Elective Phase		
		Elective 1: Composition or Musicology or Performance	1	15
		Elective 2: Composition or Musicology or Performance	2	15
		Elective 3: Composition or Musicology or Performance	3	15
				100

MUSIC 2				
Task No.	Due	Assessment Task Description	Topic No.	Value
1.	T1 W3	Musicology Core: research submission	Mandatory	10
2.	T1 W5	Aural Core: written paper and sight singing		10
3.	T1 W10	Performance Core: 2 pieces and viva	Mandatory & Additional	20
4.	T2 W6	Composition Core: Piece and Diary	Mandatory	20
5.	T2 W9	(Composition Elective: Piece, folio and viva)	Additional	(20)
6.	T3 W2	Musicology Core: research submission	Additional	10
7.	T3 W4,5	Aural Core: written paper and sight singing		10
8.	T3 W4,5	(Performance/Musicology Elective: 2 pieces or written submission)		(20)
				100

MUSIC EXTENSION HSC COURSES 2008

MUSIC EXTENSION INTERNAL ASSESSMENT (50% of HSC mark)

(Only one Learning Experience selected for the course, from Composition, Performance and Musicology.)

MUSIC EXTENSION			
Task No.	Due	Assessment Task Description	Value
1.	T1 W8/9	One Elective: selected Performance TWO contrasting pieces (15 mins) OR Composition TWO pieces submitted & folio (6 mins) OR Musicology ONE essay (2000 words)	20
2.	T2 W8	ONE viva voce on Performance Repertoire and Critique OR Composition Folio OR Musicology Folio	5
3.	T3 Trial	Performance Elective (20 mins max) ONE ensemble piece ONE solo item ONE solo item Composition Elective (6 mins max) TWO contrasting pieces or movements & folio Musicology Elective ONE essay (3000 words) and folio	25
			50

**PERSONAL DEVELOPMENT, HEALTH AND
PHYSICAL EDUCATION
HSC COURSE 2009**

ASSESSMENT COMPONENTS AND WEIGHTINGS

PERSONAL DEVELOPMENT, HEALTH AND PHYSICAL EDUCATION		
COMPONENTS		WEIGHTING %
<u>No.</u>		
1.	Core 1: Health Priorities in Australia	30
2.	Core 2: Factors Affecting Performance	30
3.	Option 1: The Health of Young People	20
4.	Option 3 OR Option 4 OR Option 5	20
	Total	100

These components will be assessed in the following manner:

ASSESSMENT TASKS

Task No.	Due	Assessment Task Description	Components	Marks/Value	Total %
1.	T4 W9	In Class Essay & Research	1	20	20
2.	T1 W6	Report & Research	3	15	15
3.	T2 W5	Written Report & Lab	2	20	20
4.	T2 W9	Extended Responses	4	15	15
5.	T3 W4,5	Trial Exam	1,2,3,4	10,10,5,5	30
					100

PHYSICS
HSC COURSE 2009

ASSESSMENT COMPONENTS AND WEIGHTINGS

PHYSICS		
COMPONENTS		WEIGHTING %
<u>No.</u>		
1.	Knowledge and understanding	40
2.	Skills in planning and conducting first-hand investigations	30
3.	Skills in scientific thinking and problem solving	30
	Total	100

These components will be assessed in the following manner:

ASSESSMENT TASKS

Task No.	Due	Assessment Task Description	Components	Marks/Value	Total %
1.	T4 W6	Practical Test	2	15	15
2.	T1 W8/9	Open Ended Investigation	2,3	15,5	20
3.	T2 W7	Test	1,3	10,10	20
4.	T3 W2	Research Assignment	1,3	5,10	15
5.	T3 W4,5	Trial HSC	1,3	25,5	30
					100

SENIOR SCIENCE HSC COURSE 2009

ASSESSMENT COMPONENTS AND WEIGHTINGS

SENIOR SCIENCE		
COMPONENTS		WEIGHTING %
<u>No.</u>		
1.	Knowledge and understanding	40
2.	Skills in planning and conducting first-hand investigations	30
3.	Skills in scientific thinking and problem solving	30
	Total	100

These components will be assessed in the following manner:

ASSESSMENT TASKS

Task No.	Due	Assessment Task Description	Components	Marks/Value	Total %
1.	T4 W9	Open-ended Investigation	2,3	10,20	30
2.	T1 W8	Test	1	20	20
3.	T2 W6	Practical	2	20	20
4.	T3 W4,5	Trial HSC Examination	1,3	20,10	30
					100

SOCIETY AND CULTURE
HSC COURSE 2009

ASSESSMENT COMPONENTS AND WEIGHTINGS

SOCIETY AND CULTURE		
COMPONENTS		WEIGHTING %
<u>No.</u>		
1.	Core	40
2.	Depth Study One	30
3.	Depth Study Two	30
	Total	100

These components will be assessed in the following manner:

ASSESSMENT TASKS

Task No.	Due	Assessment Task Description	Components	Marks/ Value	Total %
1.	T4 W8	Methodologies application, secondary research, PIP plan	1	10	10
2.	T1 W8	In class test: Social & Cultural Continuity & Change	1	10	10
3.	T1 W10	PIP progress report (B.O.S. mandated)	1	-	-
4.	T2 W4	Depth Study One: Content Analysis	2	20	20
5.	T2 W8	Methodologies Application: Final PIP	1	10	10
6.	T3 W2	Draft	3	20	20
7.	T3 W4,5	Depth Study Two: Oral Presentation Trial HSC Examination	1,2,3	10,10,10	30
					100

SOFTWARE DESIGN AND DEVELOPMENT HSC COURSE 2009

The school assessment is based entirely on the HSC Course.

ASSESSMENT COMPONENTS AND WEIGHTINGS

SOFTWARE DESIGN AND DEVELOPMENT – 2 UNIT		
COMPONENTS		WEIGHTING %
<u>No.</u>		
1.	Knowledge and understanding about development and impact of software solutions, the software development cycle	20
2.	Design and development of software solutions	35
3.	Project management techniques, including documentation, teamwork and communication	20
4.	Project	25
	Total	100

These components will be assessed in the following manner:

ASSESSMENT TASKS

Task No.	Due	Assessment Task Description	Components	Marks/Value	Total %
1.	T4 W9	Written Test (Option Topic)	1,2	5,10	15
2.	T1 W8/9	Written Test	1,3	5,5	10
3.	T2 W8	Written Test	2,3,4	5,5,10	20
4.	T3 W2	Project	2,3,4	10,5,15	30
5.	T3 W4,5	Trial HSC	1,2,3	10,10,5	25
					100

STUDIES OF RELIGION 2 UNIT
HSC COURSE 2009

ASSESSMENT COMPONENTS AND WEIGHTINGS

STUDIES OF RELIGION 2 UNIT		
COMPONENTS		WEIGHTING %
<u>No.</u>		
1.	Section 1 – Depth Studies 1, 2 & 3	50
2.	Section 2 – Religion and Peace	20
3.	Section 3 – Religion and Belief Systems in Australia Post 1945	15
4.	Section 4 – Religion and Non-Religion	15
	Total	100

These components will be assessed in the following manner:

ASSESSMENT TASKS

Task No.	Due	Assessment Task Description	Components	Marks/Value	Total %
1.	T4 W8	Oral	3	10	10
2.	T1 W5	Test	4	10	10
3.	T1 W9	Essay	1	20	20
4.	T2 W5	Research & source analysis	1	15	15
5.	T2 W9	Essay	2	15	15
6.	T3 W4,5	Trial HSC	1,2,3,4	15,5,5,5	30
					100

STUDIES OF RELIGION 1 UNIT
HSC COURSE 2009

ASSESSMENT COMPONENTS AND WEIGHTINGS

STUDIES OF RELIGION 1 UNIT		
COMPONENTS		WEIGHTING %
<u>No.</u>		
1.	Section 1 – Depth Studies 1 & 2	35
2.	Section 2 – Religion and Belief Systems in Australia Post 1945	15
	Total	100

These components will be assessed in the following manner:

ASSESSMENT TASKS

Task No.	Due	Assessment Task Description	Components	Marks/Value	Total %
1.	T4 W8	Oral	2	10	20
2.	T1 W9	Essay	1	15	30
3.	T2 W5	Research and source analysis	1	10	20
4.	T3 W4,5	Trial HSC	1,2	10,5	30
				50	
					100

TEXTILES AND DESIGN HSC COURSE 2009

ASSESSMENT COMPONENTS AND WEIGHTINGS

TEXTILES AND DESIGN		
COMPONENTS		WEIGHTING %
<u>No.</u>		
1.	Design	20
2.	Major Textiles Project	50
3.	Properties and Performance of Australian Textiles	20
4.	Australian Textile, Clothing, Footwear and Allied Industries	10
	Total	100

These components will be assessed in the following manner:

ASSESSMENT TASKS

Task No.	Due	Assessment Task Description	Components	Marks/Value	Total %
1.	T4 W8	Oral Presentation Written Justification	2	15	15
2.	T2 W1	Research Assignment	1	10	10
3.	T2 W2	Diary – Progress Mark	2	10	10
4.	T2 W6	Excursion Report/Research Assignment	3,4	10,5	15
5.	T3 W3	Diary + Experimentation	2	25	25
6.	T3 W4,5	Trial HSC	1,3,4	10,10,5	25
					100

VISUAL ART
HSC COURSE 2009

ASSESSMENT COMPONENTS AND WEIGHTINGS

VISUAL ART		
COMPONENTS		WEIGHTING %
<u>No.</u>		
1.	Art History and Criticism	50
2.	Art Making	50
	Total	100

These components will be assessed in the following manner:

ASSESSMENT TASKS

Task No.	Due	Assessment Task Description	Components	Marks/ Value	Total %
1.	T4 W9	Art research	1	10	10
2.	T4 W9	Oral presentation and Visual Arts Diary	2	10	10
3.	T1 W5	Case studies and essay	1	20	20
4.	T2 W5	Visual Arts Diary and Body of Work	2	15	15
5.	T3 W2	B.O.W. Exhibition	2	25	25
6.	T3 W4,5	Trial HSC	1	20	20
					100

2009 HSC CALENDAR OF ASSESSMENT TASKS

WK	TERM 4 - 2008 13 October-19 Dec	TERM 1 - 2009 27 January-9 April	TERM 2 - 2009 28 April -10 July	TERM 3 - 2009 27 July-2 October
1			Business Studies, Textiles & Design	Business Studies
2		English Advanced, English Standard	Chinese Extension, CAFS, Drama, English Extension 1, English Extension 2, Textiles & Design	Ancient History, Chinese Continuers, CAFS, Indonesian Continuers, Italian Continuers, Japanese Beginners, Legal Studies, Modern History, Music 1, Music 2, Physics, Society & Culture, SDD, Visual Art
3		English Extension 2, Music 2	Biology, Chinese Continuers, English Advanced, ESL, English Standard, Music 1	Italian Beginners, Textiles & Design
4		Italian Extension, Music 1, SOR 2U	Indonesian Continuers, Legal Studies, Society & Culture	TRIAL HSC EXAMS
5		Business Studies, Chinese Extension, French Continuers, French Extension, Indonesian Extension, Legal Studies, Music 2, Visual Art	Economics, French Continuers, Italian Extension, PDHPE, SOR 2U, SOR 1U, Visual Art	TRIAL HSC EXAMS
6	Drama, English Extension 1, Physics	Biology, Chinese BS, Chinese Continuers, Drama, English Extension 1, Information Technology, Japanese Beginners, PDHPE	Chemistry, English Extension 2, EEC, French Extension, Indonesian Extension, Information Technology, Modern History, Music 2, Senior Science, Textiles & Design	
7	Chinese Continuers, Chinese Extension, CAFS, Dance, EEC, Information Technology, Legal Studies, Modern History	Extension History, Hospitality, Italian Beginners	Italian Beginners, Physics	
8	Ancient History, Biology, Chemistry, Chinese BS, Economics, English Advanced, ESL, English Standard, Food Technology, French Continuers, General Mathematics, Indonesian Continuers, Italian Continuers, Legal Studies, Mathematics, Society & Culture, SOR 2U, SOR 1U, Textiles & Design	Chemistry, Drama, Economics, English Advanced, ESL, English Standard, EEC, Italian Beginners, Modern History, Music Extension, Physics, Senior Science, Society & Culture, SDD	Chinese BS, Extension History, Food Technology, Information Technology, Italian Extension, Japanese Beginners, Mathematics Extension 1, Music 1, Music Extension, Society & Culture, SDD	
9	Business Studies, Extension History, Hospitality, Italian Beginners, Japanese Beginners, Mathematics Extension 1, Mathematics Extension 2, Music 1, PDHPE, Senior Science, SDD, Visual Art	Ancient History, Economics, EEC, Indonesian Continuers, Italian Beginners, Music Extension, Physics, SDD, SOR 2U	Ancient History, CAFS, French Extension, General Mathematics, Indonesian Extension, Italian Continuers, Japanese Beginners, Mathematics, Mathematics Extension 2, Music 2	
10		Food Technology, French Extension, Indonesian Extension, Italian Continuers, Italian Extension, Music 1, Music 2, Society & Culture	Drama, Economics, English Advanced, ESL, English Standard, Extension History, French Continuers, Indonesian Continuers, Italian Beginners, SOR 2U, SOR 1U	
11		CAFS, French Continuers, General Mathematics, Japanese Beginners, Mathematics, Mathematics Extension 1, Mathematics Extension 2		

2009 HSC CALENDAR OF ASSESSMENT TASKS – PERSONAL PLANNER

WK	TERM 4 - 2008 13 October-19 Dec	TERM 1 - 2009 27 January-9 April	TERM 2 - 2009 28 April -10 July	TERM 3 - 2009 27 July-2 October
1				
2				
3				
4				TRIAL HSC EXAMS
5				TRIAL HSC EXAMS
6				
7				
8				
9				
10				
11				

This page may be detached for use.



BURWOOD GIRLS HIGH SCHOOL

**HSC
ASSESSMENT POLICY
AND PROCEDURES
2009**