



**BURWOOD GIRLS HIGH SCHOOL**

**HSC**  
**ASSESSMENT POLICY**  
**AND PROCEDURES**  
**2010**



# CONTENTS

<b>1) General Information</b>	<b>Page No.</b>
Special Provisions .....	3
Board of Studies Requirements.....	3
The Requirements of the Education Act 1990 (Attachment 1) .....	4
Pattern of Study Requirements Checklist for the 2010 HSC (Attachment 2).....	5
School-Based Monitoring Processes for the 2010 HSC (Attachment 3) .....	6
Burwood Girls High School HSC Assessment Policy & Procedures .....	7
1. General Information .....	7
2. Notification of Assessment Results.....	7
3. Student Responsibilities.....	7
4. Assessment Task Procedures .....	8
5. Unsatisfactory Completion of Course.....	9
6. What Happens if you Miss a Task?.....	10
7. Cheating or Malpractice .....	10
8. Reviews and Appeals.....	10
9. Information and Advice .....	11
Assessment Task Flow Chart.....	12
Glossary of Key Words .....	13
Example of Illness, Accident or Misadventure form.....	14
Sample Letter: Official Warning of 'N' Determination (HSC) .....	15
<b>2) Subject Information</b>	
Ancient History .....	18
Biology .....	19
Business Studies.....	20
Chemistry .....	21
Chinese Background Speakers.....	22
Chinese Continuers.....	23
Chinese Extension .....	24
Community & Family Studies .....	25
Dance.....	26
Drama .....	27
Economics.....	28
English Advanced .....	29
English (ESL) .....	30
English Extension 1.....	31
English Extension 2.....	32
English Standard.....	33
Extension History .....	34
Food Technology .....	35
French Continuers.....	36
French Extension .....	37
General Mathematics .....	38
Hospitality Operations VET .....	39
Indonesian Continuers .....	41
Indonesian Extension.....	42
Italian Beginners .....	43
Italian Continuers .....	44
Italian Extension.....	45
Japanese Beginners .....	46
Legal Studies .....	47
Mathematics 2 unit.....	48

Mathematics Extension 1.....	49
Mathematics Extension 2.....	50
Modern History .....	51
Music 1, Music 2.....	52
Music Extension.....	53
Personal Development, Health & Physical Education .....	54
Physics .....	55
Senior Science.....	56
Society and Culture .....	57
Software Design and Development .....	58
Studies of Religion 2 unit.....	59
Studies of Religion 1 unit.....	60
Textiles & Design.....	61
Visual Art .....	62

## Appendix

Calendar of Assessment Tasks .....	63
Student Planner of Assessment Tasks .....	64

VET = Vocational Education & Training

**Note: The following courses are not being run in 2010:**

*Earth & Environmental Science, Exploring Early Childhood, Geography, Information Processes & Technology, Information Technology VET, Photography 1 unit, Photography 2 Unit, Visual Design*

**NB:** At the time of printing, the proposed changes to the HSC Assessment Guidelines were not published by the Board of Studies (BOS). Any changes that need to be made to the courses' grids will be given to the students in writing.

# 1) GENERAL INFORMATION

## Introduction

**Student assessment provides evidence for making judgement about student achievement. This booklet will inform you clearly of assessment tasks that must be completed to show that you have satisfied the requirements of the course.**

The student must also **complete all course work to a satisfactory standard** in order to meet the requirements of the HSC course.

Your Year Advisers and the Careers Adviser are available to assist you if you have any concerns or problems regarding your Higher School Certificate, the Australian Tertiary Admission Rank (ATAR) or whether your pattern of study best suits the career path you wish to take.

It is most important to keep your Year Advisers up to date with changes to your study. They will provide you with support if you are experiencing any problems that may affect your studies. If you are going to be absent for any period of time, seek approval from the Principal first. Extended leave for Year 12 students is unlikely to be approved by the Principal.

Mia Kumar  
**Principal**

Chris Maiorana  
**Year Adviser**

## SPECIAL PROVISIONS

If your daughter has a diagnosed medical condition such as a mental health issue or diagnosed learning difficulty she may be eligible for Special Provisions. Special Provisions must be applied for and approved by the Board of Studies for the School Certificate and Higher School Certificate examinations. They may also apply for school based assessment tasks. Special Provisions may include extra time to write, extra time to rest and separate supervision. Should your daughter be eligible please contact the school counsellor, Marja Boddeus on 97473355

## BOARD OF STUDIES REQUIREMENTS FOR THE AWARD OF A 2010 HSC

Students should refer to:

- Rules and Procedures for 2010 Higher School Certificate Candidates.
- Requirements of the Education Act 1990 (Attachment 1) (see page 4) and Pattern of Study Requirements Checklist for the 2010 Higher School Certificate (Attachment 2) (see page 5).

**THE REQUIREMENTS OF THE *EDUCATION ACT 1990*  
IN RELATION TO THE NEW SOUTH WALES HIGHER SCHOOL CERTIFICATE**

**Higher School Certificate – section 95**

Higher School Certificates are to be granted by the Board of Studies to students who:

- (a) have been granted a School Certificate, or who have attained such other qualifications as the Board considers satisfactory; and
- (b) have attended a government school, or registered non-government school to which a current certificate of accreditation applies, or school outside New South Wales recognised by the Board, or a TAFE establishment within the meaning of the *Technical and Further Education Commission Act 1990*; and
- (c) have participated, to the Board's satisfaction, in courses of study which have been determined under this Act as appropriate to be undertaken by candidates for the Higher School Certificate; and
- (d) have been accepted by the Board as having satisfactorily completed those courses of study; and
- (e) have, to the Board's satisfaction, undertaken the requisite examinations or other forms of assessment; and
- (f) have complied with any requirements prescribed by the regulations or any requirements imposed by the Minister or the Board.

The Board may refuse to grant a Higher School Certificate to a student whose attendance or application at school has been of such an unsatisfactory character that the grant of the certificate would not, in the opinion of the Board, be justified.

**Curriculum for Higher School Certificate candidates – section 12**

The curriculum during Year 11 and Year 12 for students who are candidates for the Higher School Certificate must meet the following requirements:

- (a) courses of study of a general description determined by the Minister on the recommendation of the Board are to be provided for each student in each Year,
- (b) those courses of study are to include a course of study in English,
- (c) those courses of study are to comply with a pattern of study determined by the Minister on the recommendation of the Board,
- (d) those courses of study are to be taught in accordance with a syllabus developed or endorsed by the Board and approved by the Minister.

These requirements are articulated in Attachment 2.

**PATTERN OF STUDY REQUIREMENTS CHECKLIST  
FOR THE 2010 HIGHER SCHOOL CERTIFICATE**

✓	<b><i>Do your students who complete the Higher School Certificate in 2010 meet the following pattern of study requirements?</i></b>
	At least 12 units of Preliminary courses and 10 units of HSC courses
	At least 2 units of a Board Developed Course in English – at both Preliminary and HSC level
	At least 4 subjects – at both Preliminary and HSC level
	At least 6 units of Board Developed Courses – at both Preliminary and HSC level
	At least 3 courses of 2 unit value or greater (Board Developed and/or Board Endorsed Courses) – at both Preliminary and HSC level
	A maximum of 6 Preliminary units and 6 HSC units from courses in Science [Ref: <i>ACE Manual</i> , Dec. 2005, Section 8.3.1.4, p.88]
	In the Preliminary study pattern, Senior Science cannot be studied in combination with Biology, Chemistry, Earth and Environmental Science or Physics. In the HSC study pattern, Senior Science can be studied in combination with Biology, Chemistry, Earth and Environmental Science or Physics. Students undertaking Senior Science in the HSC study pattern must have satisfactorily completed the Preliminary course in at least one Science course [Ref: <i>ACE Manual</i> , Dec. 2005, Section 8.3.1.4, p.88]
	Met eligibility requirements for the English (ESL) course [Ref: <i>ACE Manual</i> , Dec. 2005, Section 8.2.2.1, p.84]
	Met eligibility requirements for Continuers courses in languages where there are Background Speakers courses [Ref: <i>ACE Manual</i> , Dec. 2005, Section 8.2.2.2, p.84-86]
	Met eligibility requirements for Beginners courses in languages [Ref: <i>ACE Manual</i> , Dec. 2005, Section 8.2.2.3, p.86]
	Board Endorsed Courses have current endorsement
	Students are not enrolled in any Board Developed Course, Board Endorsed Course, TAFE delivered VET HSC Course or Board Endorsed Course combinations which are subject to Board exclusions. [For exclusions please see <i>ACE Manual</i> , Dec. 2005, Section 8.3, p.87-90, PLUS also check your school BEC decision letters or check for BEC decisions via <i>Schools Online</i> .]
<b>REMINDERS</b>	
	Students seeking an ATAR (Australian Tertiary Admission Index) in 2010 must complete at least 10 units of Board Developed Courses for which there are formal examinations conducted by the Board of Studies, including (a) at least 2 units of English, and (b) at least 8 units of Category A courses. Courses completed must include at least three Board Developed Courses of 2 units or greater and at least four subjects. NB: Board Endorsed Courses and Content Endorsed Courses, including vocational Content Endorsed Courses, do not satisfy requirements for an ATAR.
	Schools should note that additional Departmental curriculum requirements (e.g. sport, religious education, 25 hours of PDHPE etc) or conditions of enrolment at individual schools are not requirements for Higher School Certificate credentialing as determined by the Board of Studies as the statutory Higher School Certificate credentialing authority.
	Schools will need to ensure that Board requirements are met in cases of accumulation, acceleration, repeating, recognition of prior learning and in any cases of non-completion of course requirements. [Please refer to <i>ACE Manual</i> , Dec. 2005, Section 8 for details.]
	Students with special education needs can meet the requirements for the award of the Higher School Certificate by undertaking a combination of Board Developed Courses, Board Endorsed Courses and/or Stage 6 Life Skills Courses. Principals will be required to certify on the Preliminary and HSC entry forms that enrolment of a student in any Life Skills Courses for Stage 6 is the result of a planning process that addresses the student's transition from school to adult life. [Please refer to the <i>ACE Manual</i> , Dec. 2005, Section 7, p.73-77.]

## **SCHOOL-BASED MONITORING PROCESSES FOR NEW SOUTH WALES HIGHER SCHOOL CERTIFICATE**

In accordance with Board of Studies' requirements all senior students must be issued with the booklets *Studying for the NSW Higher School Certificate: An Information Booklet for Year 10 Students 2007* (June 2006) and *Rules and Procedures for 2010 Higher School Certificate Candidates* (October 2009).

Other procedures might include:

- providing head teachers and teachers of Year 11 and Year 12 with a copy of this memorandum and its attachments
- conducting a workshop for all Year 11 and Year 12 teachers based on the Higher School Certificate Monitoring Workshop developed by Hunter/Central Coast Region and provided to all regions at the start of Term 3 2009. This workshop includes a Higher School Certificate quiz, various Higher School Certificate scenarios and three handouts for head teachers and teachers.
- using the workshop handouts and poster from the Higher School Certificate Monitoring Workshop on Principles of HSC Monitoring and HSC Planning Matrix with head teachers and teachers of Year 11 and Year 12, as a basis for evaluation of current practices and long term action to enhance Higher School Certificate monitoring processes within the school
- providing all senior students with Attachments 1 and 2 from this memorandum
- displaying copies of the Higher School Certificate requirements in senior students' classrooms, study areas and the library
- checking individual student compliance with these requirements at least once each term in Years 11 and 12, and whenever Board of Studies' confirmation of entry documents are generated
- issuing students with printouts of their courses with variations to the approved pattern of study highlighted
- ensuring students have signed their Confirmation of Entry forms
- displaying copies of the English Prescribed Texts poster
- displaying copies of the Higher School Certificate Exam Timetable poster and issuing students with individual copies of the timetable
- encouraging students to use the Board of Studies *Students Online* service. This service provides access to:
  - personal information held by the Board of Studies
  - Higher School Certificate entry information
  - personalised examination timetables
  - personalised Advice Line Schedules
  - Higher School Certificate results.

# BURWOOD GIRLS HIGH SCHOOL

## HSC ASSESSMENT POLICY AND PROCEDURES

### 1. General Information

HSC assessment in Year 12 gives credit for consistent performance. It may assess aspects of the course that are not examined in the Higher School Certificate examination. Burwood Girls High School has developed a program that covers Board requirements, with complete fairness to students, and balance between courses. Students are required to be diligent and complete all tasks presented to them.

This assessment process will begin Term 4 of the preliminary year, and will finish one week before the Trial Higher School Certificate examinations (excepting practical tasks, LOTE speaking tasks and culmination of practical projects).

Not every piece of work completed will be part of the “assessment” mark, some work is set to practise skills so that the students can see how well they understand the topic. **All set work should be regarded as an essential course requirement**, even when it is not included as an assessment task. Students will automatically fail a course if they do not make a satisfactory attempt to complete assessable tasks with a weighting of over 50%.

Attendance at all timetabled lessons is an important step to fulfilling course requirements. The Principal may decide that a student’s attendance has made it impossible for course outcomes to be achieved. The Board of Studies suggests that absences greater than 15% make it difficult to satisfactorily complete a course.

Students may also be deemed not to have satisfactorily completed a course if there is sufficient evidence of:

- a) failure to complete experiences specified in the syllabus, eg fieldwork, oral presentations, assignments, practical work, participation in class;
- b) non-serious or trivial preparation for exams.

### 2. Notification of Assessment Results

Students are provided with information on their performance in each task (mark and / or rank). Students are NOT told their final school assessment mark, but will be given their progressive ranking. Students may collect the final Assessment Rank Order Notice on completion of their HSC exams.

### 3. Student Responsibilities

- YOU ARE RESPONSIBLE FOR YOUR OWN ASSESSMENT in a number of ways. If you act irresponsibly you may end up with a ZERO MARK (0).
- YOU MUST BE FAMILIAR with the assessment policies set out in this book for each subject you take.
- It is YOUR RESPONSIBILITY to:
  - (a) ATTEND SCHOOL, be AWARE OF DUE DATES for assessment tasks and complete tasks ON TIME. If you are absent for any school days you must check with your teachers to see if any assessment tasks have been set on the FIRST DAY of your return to school.
  - (b) BE ON TIME to assessment tasks: you will NOT be given an extension of time. If you are late to any task held in school time or at the beginning of the day, then the

Deputy Principals or the Principal must verify that you have a LEGITIMATE reason for being later and give you a note to that effect.

- (c) BE PRESENT to do all in-school assessment tasks. This means being **PRESENT THE DAY BEFORE AND ALL DAY** that a task is due or that a task is set as an exam. **IT IS NOT PERMITTED TO TAKE DAYS OFF FROM SCHOOL IN ORDER TO COMPLETE AN ASSESSMENT TASK OR STUDY FOR A TEST.** If you miss lessons prior to Assessment Tasks you will be asked to explain your absence in writing and to accompany this with a medical certificate or other appropriate documentation (see "What happens if you miss a task?" on page 10). If you are absent you risk receiving a ZERO MARK for the task.
- (d) HAND IN any homework assessment task on time.

YOU MUST NOT under any circumstances leave a piece of work on a teacher's desk as no record will have been established of its presentation. Therefore any work not personally handed to the class teacher or a person nominated by the class teacher will be dealt with in the same manner as for failure to complete a task and a ZERO MARK will be awarded accordingly. Friends are NOT to hand in your task.

If absent on the day a task is due, it is the student's responsibility to contact the teacher or Head Teacher of the faculty (9747 3355) ON THE FIRST DAY OF ABSENCE.

- (e) BRING A MEDICAL CERTIFICATE or other documentation justifying your absence to your teacher (and a copy to the front office) on your FIRST DAY back at school if you are absent for an assessment test or are absent on the day a task is due. Back-dated medical certificates are not acceptable. Students who habitually present doctors' certificates for assessment tasks will be deemed to be non-serious students unless the school is aware of a prior medical condition. On return to school submit "Illness, Accident or Misadventure Application" form (see Appendix) to the subject teacher with medical certificate, which will be referred to the Assessment Committee.
- (f) NOTIFY your teacher of any assessment problems **in advance**, if possible. If you are ill on the day of an assessment task or have suffered a misadventure immediately prior to the day of an assessment task, you must inform the teacher on the day of the task **before** the task begins. Illness/misadventure forms must be submitted to the teacher, supported by a doctor's certificate, within 48 hours.
- (g) CHECK THE MARKING of each task when it is returned to you.
- (h) CHECK YOUR ASSESSMENT RANK when it is given to you from time to time.
- (i) REFER to the Board of Studies website for current course information, including course outcomes - [www.boardofstudies.nsw.edu.au/syllabus\\_hsc](http://www.boardofstudies.nsw.edu.au/syllabus_hsc).

Some prolonged absences, eg a holiday overseas, cannot be taken into account and could lead to you not meeting outcomes in that subject. You must seek approval from the Principal before you take your leave.

#### 4. Assessment Task Procedures

- You will be given at least **2 weeks notice in writing** of any assessment task. All the class will be asked to sign a "record of issue/collection of task" form stating the date and time of day the task is due. It is up to you to abide by the guidelines set out in this assessment booklet.

- Assessment tasks must be submitted on the due date. A zero mark will be awarded for work submitted late, unless a **doctor's certificate** or exceptional circumstances deemed acceptable by the Head Teacher are supplied (in writing).
- It is your responsibility to see your teacher before school on the morning of your return to school to hand in the task or to arrange to complete a missed in-class task. The teacher and Head Teacher of the course will decide what sort of task will need to be submitted, eg an alternative task or the original task.
- The deputy principal in exceptional circumstances may authorise an **estimate** to be given for a missed task.
- You will be awarded a **zero mark** for an assessment task/examination if you have **cheated**, submitted a **non-serious attempt**, plagiarised or committed any other form of malpractice.
- If you are completing **compulsory work placement** you will not be disadvantaged. If there is sufficient time prior to commencing work placement the task can be submitted early or handed in by another person on the due date. It is your responsibility to notify your teacher and Head Teacher once you are aware that you will be on work placement when the task is due. A new date may be set by the Head Teacher which should be recorded on the "record of issue/collection" form.
- If you are involved in **knockout sport** you must notify your teacher and Head Teacher as soon as you are aware of the clash of dates. Permission to attend the knockout game will be at the discretion of the Head Teacher and Head Teacher PDHPE. You may be given the option of completing the task prior to competing in the knockout game or, if it is a research task, you need to arrange for it to be handed in to your teacher on the required day.
- If you choose to prepare and produce work with the use of **computer technology** it is your responsibility to ensure a hard copy is made well in advance of the due date. Computer and associated technology malfunction, even theft, without evidence of "work in progress" is **not a reason for late submission**.
- If you believe a task has been incorrectly marked you should discuss the matter with the class teacher concerned as soon as you receive the task back. Dissent about a mark which a teacher has determined is **NOT** grounds for appeal.
- If you believe you have been unfairly treated in being awarded a **zero** mark for an assessment task you may seek clarification from the Head Teacher of the course or go through the appeals process on page 10.

## 5. Unsatisfactory Completion of Course

- If you fail to satisfy minimum course requirements you will be awarded an 'N' determination. This means you have failed the course and it will not count towards the HSC. (You must complete at least 12 preliminary units + 10 HSC units.)
- **What should 'N' Award letters be written for?**
  - (a) **Failure to submit assessable tasks.** Assessable tasks are those in the assessment booklet.
  - (b) **Lack of diligence.** This is when a student has failed to complete a significant amount of non-assessable work such as class work, homework, practical work and other learning tasks the teacher has assigned – a genuine attempt must be made of all tasks.

- (c) **Not completing the prescribed course.** This is most obvious when the student has poor attendance and misses a large amount of lessons. When student's absences exceed 15% they may be considered as not adequately completing the course.

## 6. What Happens If You Miss A Task?

IT IS VERY IMPORTANT that you be in attendance when assessment tasks are scheduled. Failure to complete a task without adequate reason will result in a ZERO MARK being awarded for the task.

UNAVOIDABLE ABSENCES caused by illness or misadventure must be explained IN WRITING and accompanied by a MEDICAL CERTIFICATE or other APPROPRIATE DOCUMENTATION. This documentation must be submitted on the FIRST DAY of return to school to the Head Teacher or teacher in charge of the task. (Copies of documentation of absence to be also handed to the front office.) You must also contact the teacher or Head Teacher of the faculty on the first day of the absence (9747 3355).

- a) **Medical certificates/other documentation MUST be issued by a qualified medical practitioner, preferably your family doctor or specialist.**
- b) The certificate/document should clearly state the nature of the condition/circumstance and how this might be expected to affect your performance.
- c) The certificate/document should also cover the ENTIRE PERIOD OF YOUR ABSENCE. For example, if you are absent on the day of the task, the day before and the day after as well, your certificate/document must cover all three days.
- d) The school reserves the right to check all certificates/documentation submitted and will on occasion make contact with the doctor/s concerned.

## 7. Cheating or Malpractice

All assessment tasks must be:

- a) YOUR OWN ORIGINAL WORK. You cannot submit a task which is the same as another student's task. You may work on a task with a friend, relative, etc but the final copy must be in your own words, ie it must be YOUR OWN INTERPRETATION of the task. Failure to comply with this will lead to the award of a ZERO MARK.
- b) Completed in the current assessment period. You may not hand in a task or part of a task completed for another assignment in this or previous years. Students found to have committed this form of malpractice will be awarded a ZERO MARK.

In situations where it is established that the student has copied from another student or misrepresented work copied from a source or committed any other type of malpractice then a ZERO MARK will be given for the task.

The Head Teacher in consultation with the class teacher will establish that malpractice has occurred. Parents/guardians will be advised in writing.

## 8. Reviews and Appeals

Students may request a school review if:

- (a) they believe their final rank (as issued by the Board of Studies) is different from the position obtained in the course, or
- (b) they believe that the school did not follow the procedures stated in the assessment program for that subject

The request for review must be made within three days of the issue of assessment ranks.

The way marks were awarded by the teacher for assessment tasks will not be subject to review.

The school review panel will consist of the Principal or Deputy Principal, the Head Teacher concerned, and one other Head Teacher.

The Year Adviser may act as student advocate in these cases. A student who is dissatisfied with the school's review procedures may appeal to the Board.

## **9. Information and Advice**

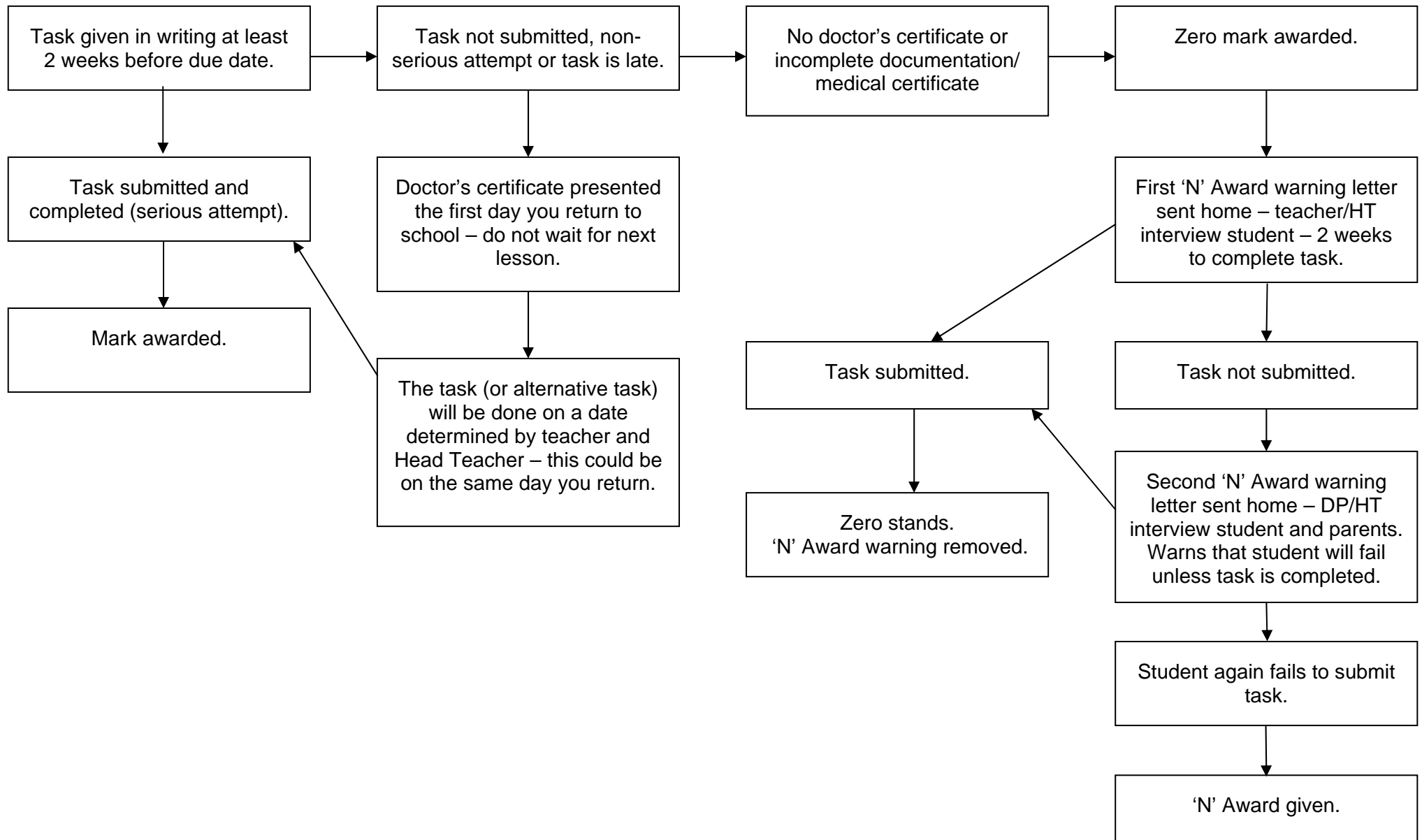
### **Advice on assessment is available from:**

- The Assessment Co-ordinator
- The Head Teacher of the Faculty concerned
- The Careers Adviser
- The Student Adviser

### **Information is located:**

- Board documents – with the Principal or Assessment Co-ordinator
- Board of Studies website – [www.boardofstudies.nsw.edu.au](http://www.boardofstudies.nsw.edu.au)
- Rules and Procedures for Higher School Certificate Candidates - Board of Studies booklet issued to each student
- School Assessment Policy
- HSC Assessment Policy and Procedures – spare copies with the Student Adviser, Deputy Principal
- Faculty Assessment Program – with the Faculty concerned; copy with the Principal

### ASSESSMENT TASK FLOW CHART



## GLOSSARY OF KEY WORDS

Syllabus outcomes, objectives, performance bands and examination questions have key words that state what students are expected to be able to do. A glossary of key words has been developed to help provide a common language and consistent meaning in the Higher School Certificate documents.

Using the glossary will help teachers and students understand what is expected in responses to examinations and assessment tasks.

<b>Account</b>	Account for: state reasons for, report on. Give an account of: narrate a series of events or transactions
<b>Analyse</b>	Identify components and the relationship between them; draw out and relate implications
<b>Apply</b>	Use, utilise, employ in a particular situation
<b>Appreciate</b>	Make a judgement about the value of
<b>Assess</b>	Make a judgement of value, quality, outcomes, results or size
<b>Calculate</b>	Ascertain/determine from given facts, figures or information
<b>Clarify</b>	Make clear or plain
<b>Classify</b>	Arrange or include in classes/categories
<b>Compare</b>	Show how things are similar or different
<b>Construct</b>	Make; build; put together items or arguments
<b>Contrast</b>	Show how things are different or opposite
<b>Critically (analyse/evaluate)</b>	Add a degree or level of accuracy depth, knowledge and understanding, logic, questioning, reflection and quality to (analyse/evaluate)
<b>Deduce</b>	Draw conclusions
<b>Define</b>	State meaning and identify essential qualities
<b>Demonstrate</b>	Show by example
<b>Describe</b>	Provide characteristics and features
<b>Discuss</b>	Identify issues and provide points for and/or against
<b>Distinguish</b>	Recognise or note/indicate as being distinct or different from; to note differences between
<b>Evaluate</b>	Make a judgement based on criteria; determine the value of
<b>Examine</b>	Inquire into
<b>Explain</b>	Relate cause and effect; make the relationships between things evident; provide why and/or how
<b>Extract</b>	Choose relevant and/or appropriate details
<b>Extrapolate</b>	Infer from what is known
<b>Identify</b>	Recognise and name
<b>Interpret</b>	Draw meaning from
<b>Investigate</b>	Plan, inquire into and draw conclusions about
<b>Justify</b>	Support an argument or conclusion
<b>Outline</b>	Sketch in general terms; indicate the main features of
<b>Predict</b>	Suggest what may happen based on available information
<b>Propose</b>	Put forward (for example a point of view, idea, argument, suggestion) for consideration or action
<b>Recall</b>	Present remembered ideas, facts or experiences
<b>Recommend</b>	Provide reasons in favour
<b>Recount</b>	Retell a series of events
<b>Summarise</b>	Express, concisely, the relevant details
<b>Synthesise</b>	Putting together various elements to make a whole



**BURWOOD GIRLS HIGH SCHOOL**

*Example*

**ILLNESS, ACCIDENT OR MISADVENTURE APPLICATION**

To be completed by student, and handed to Teacher for Head Teacher.

STUDENT'S NAME: \_\_\_\_\_

SUBJECT: \_\_\_\_\_

TEACHER'S NAME: \_\_\_\_\_ CLASS: \_\_\_\_\_

NATURE OF ASSESSMENT: \_\_\_\_\_

(State whether Examination, Topic or Unit Test, Assignment, Research Activity, Practical Exercise, Practical Test, Field Work, Other.)

DATE TASK DUE: \_\_\_\_\_

DATE THAT THE TASK WILL BE COMPLETED: \_\_\_\_\_

NATURE OF ABSENCE: \_\_\_\_\_

(State sufficient details to support your case for consideration to sit for task or substitute task or to gain an extension.)

\_\_\_\_\_  
\_\_\_\_\_  
\_\_\_\_\_  
\_\_\_\_\_

MEDICAL CERTIFICATE FROM: \_\_\_\_\_ (Name of doctor)

OR NATURE OF OTHER VERIFICATION (eg. funeral notice from newspaper etc.)

\_\_\_\_\_

STUDENT'S SIGNATURE: \_\_\_\_\_ DATE: \_\_\_\_\_

TEACHER'S COMMENT:

\_\_\_\_\_  
\_\_\_\_\_

ASSESSMENT COMMITTEE'S RECOMMENDATION:

\_\_\_\_\_  
\_\_\_\_\_

PRINCIPAL'S SIGNATURE: \_\_\_\_\_ DATE: \_\_\_\_\_

# Burwood Girls High School

## Centre of Excellence



**Sample letter: Official Warning of 'N' Determination (HSC)**

Queen Street  
Croydon NSW 2132

P +61 2 9747 3355  
F +61 2 9744 2797

burwoodg-h.school@det.nsw.edu.au  
www.burwoodg-h.schools.nsw.edu.au

Dear .....

**Re: OFFICIAL WARNING – Non-completion of a Higher School Certificate Course.**

I am writing to advise that your daughter ..... is in danger of not meeting the Course Completion Criteria for the Higher School Certificate in .....

The Board of Studies requires schools to issue students with official warnings in order to give them the opportunity to redeem themselves.

Please regard this letter as the ..... **official warning** we have issued concerning ..... A minimum of two course-specific warnings must be issued prior to a final 'N' determination being made for a course.

**Course Completion Criteria**

Where it is determined that a student has not met the Course Completion Criteria, they place themselves at risk of receiving an 'N' (non-completion of course) determination. An 'N' determination will mean that the course will not be listed on the student's Record of Achievement.

In Year 12, students must make a genuine attempt at assessment tasks that contribute in excess of 50% of available marks. Completion of tasks worth exactly 50% is not sufficient; tasks worth in excess of 50% must be completed.

To date, ..... has not satisfactorily met ..... of the Course Completion Criteria\*.

The following table lists those tasks, requirements or outcomes not yet completed or achieved, and/or for which a genuine attempt has not been made. In order for ..... to satisfy the Course Completion Criteria, the following tasks, requirements or outcomes need to be satisfactorily completed/achieved.

Task Name/ Course Requirement/ Course Outcome	Date Task Initially Due (if applicable)	Action Required by Student	Date to be Completed By (if applicable)

\*Course Completion Criteria

The satisfactory completion of a course requires principals to have sufficient evidence that the student has:

- a) **followed** the course developed or endorsed by the Board; and
- b) **applied** themselves with diligence and sustained effort to the set tasks and experiences provided in the course by the school; and
- c) **achieved** some or all of the course outcomes.

.../2

Comments:

Please discuss this matter with ..... and contact the school if further information or clarification is needed.

Yours sincerely,

.....  
Class Teacher / Head Teacher

.....  
Principal

Date .....

-----  
***Please detach this section and return to school***

**Requirements for the satisfactory completion of a Higher School Certificate Course**

- I have received the letter dated ..... indicating that ..... is in danger of not having satisfactorily completed .....
- I am aware that this course may not appear on her Higher School Certificate Record of Achievement.
- I am also aware that the 'N' determination may make her ineligible for the award of the Higher School Certificate.

Parent/Guardian's signature: .....Date: .....

Student's signature: ..... Date: .....

## **2) SUBJECT INFORMATION**

## ANCIENT HISTORY HSC COURSE 2010

### ASSESSMENT COMPONENTS AND WEIGHTINGS

ANCIENT HISTORY		
COMPONENTS		WEIGHTING %
<u>No.</u>		
1.	Core: Pompeii and Herculaneum	25
2.	Historical Period: NK Egypt to the death of Thutmose IV	25
3.	Personality: Hatshepsut	25
4.	Society: Athens at the time of Pericles	25
	Total	100

These components will be assessed in the following manner:

### ASSESSMENT TASKS

Task No.	Due	Assessment Task Description	Components	Marks/Value	Total %
1.	T4 W8	Pompeii and Herc: Res. 5 + Src. 5 + Oral 10	1	20	20
2.	T1 W9	NK Egypt to Thut IV: Res. 10 + Src. 10	2	20	20
3.	T2 W9	Hatshepsut: Res. 10 + Src. 10	3	20	20
4.	T3 W4,5	Trial HSC	1,2,3,4	5,5,5,25	40
					100

**BIOLOGY**  
**HSC COURSE 2010**

**ASSESSMENT COMPONENTS AND WEIGHTINGS**

<b>BIOLOGY</b>		
<b>COMPONENTS</b>		<b>WEIGHTING %</b>
<u>No.</u>		
1.	Knowledge and understanding	40
2.	Skills in planning and conducting first-hand investigations	30
3.	Skills in scientific thinking and problem solving	30
	Total	100

These components will be assessed in the following manner:

**ASSESSMENT TASKS**

Task No.	Due	Assessment Task Description	Components	Marks/Value	Total %
1.	T4 W8	Practical/Theory	1,2,3	10,10,5	25
2.	T1 W6	Practical/Theory	1,2,3	10,10,5	25
3.	T2 W3	Research	1,3	5,15	20
4.	T3 W4,5	Trial HSC	1,2,3	15,10,5	30
					100

## BUSINESS STUDIES HSC COURSE 2010

### ASSESSMENT COMPONENTS AND WEIGHTINGS

BUSINESS STUDIES		
COMPONENTS		WEIGHTING %
<u>No.</u>		
1.	Tests Types	50
2.	Case Studies	30
3.	Stimulus	20
	Total	100

These components will be assessed in the following manner:

### ASSESSMENT TASKS

Task No.	Due	Assessment Task Description	Components	Marks/Value	Total %
1.	T4 W9	Management Test	1	20	20
2.	T1 W5	Marketing Plan	2	15	15
3.	T2 W3	Analysis - financial information	3	15	15
4.	T3 W1	Case Study – Global/Employment Relations	2,3	15,5	20
5.	T3 W4,5	Trial HSC	1	30	30
					100

**CHEMISTRY**  
**HSC COURSE 2010**

**ASSESSMENT COMPONENTS AND WEIGHTINGS**

<b>CHEMISTRY</b>		
<b>COMPONENTS</b>		<b>WEIGHTING %</b>
<u>No.</u>		
1.	Knowledge and understanding	40
2.	Skills in planning and conducting first-hand investigations	30
3.	Skills in scientific thinking and problem solving	30
	Total	100

These components will be assessed in the following manner:

**ASSESSMENT TASKS**

Task No.	Due	Assessment Task Description	Components	Marks/Value	Total %
1.	T4 W7	Practical	2	20	20
2.	T1 W8	Test	1	20	20
3.	T2 W6	Open-ended Investigation	2,3	10,20	30
4.	T3 W4,5	Trial HSC Examination	1,3	20,10	30
					100

## CHINESE BACKGROUND SPEAKERS HSC COURSE 2010

### ASSESSMENT COMPONENTS AND WEIGHTINGS

CHINESE BACKGROUND SPEAKERS		
COMPONENTS		WEIGHTING %
<u>No.</u>		
1.	Spoken exchanges in Chinese	10
2.	Written exchanges in Chinese	10
3.	Listening and Responding	20
4.	Reading and Responding	40
5.	Writing in Chinese	20
	Total	100

These components will be assessed in the following manner:

### ASSESSMENT TASKS

Task No.	Due	Assessment Task Description	Components	Marks/Value	Total %
1.	T4 W8	Listening and Reading and Responding	3,4	10,20	15
2.	T1 W6	Spoken and Written Exchanges	1,2	10,10	20
3.	T2 W8	Listening and Responding, Reading and Responding, Writing in Chinese	3,4,5	10,20,20	25
4.	T3 W4,5	Trial HSC			
		- Listening and Responding	3	20	10
		- Reading and Responding	4	55	20
		- Writing	5	25	10
					100

## CHINESE CONTINUERS HSC COURSE 2010

### ASSESSMENT COMPONENTS AND WEIGHTINGS

CHINESE CONTINUERS		
COMPONENTS		WEIGHTING %
<u>No.</u>		
1.	Speaking	20
2.	Listening and Responding	25
3.	Reading and Responding - Part A	25
	- Part B	15
4.	Writing	15
	Total	100

These components will be assessed in the following manner:

### ASSESSMENT TASKS

Task No.	Due	Assessment Task Description	Components	Marks	Total %
1.	T4 W8	Speaking/Listening/Reading A	1,2,3	6,7.5,7.5	21
2.	T1 W7	Reading A/ Reading B	3	7.5,9	16.5
3.	T2 W7	Speaking/Listening/Writing	1,2,4	6,7.5,9	22.5
4.	T3 W4,5	Trial HSC			
		- Speaking	1	8	
		- Listening + Responding	2	10	
		- Reading + Responding A & B	3	16	
		- Writing	4	6	40
					100

**CHINESE EXTENSION 1 UNIT**  
**HSC COURSE 2010**

**ASSESSMENT COMPONENTS AND WEIGHTINGS**

<b>CHINESE EXTENSION 1 UNIT</b>		
<b>COMPONENTS</b>		<b>WEIGHTING %</b>
<u>No.</u>		
1.	Response to Prescribed Text A	15
2.	Response to Prescribed Text B	10
3.	Writing	15
4.	Speaking	10
	Total	50

These components will be assessed in the following manner:

**ASSESSMENT TASKS**

Task No.	Due	Assessment Task Description	Components	Marks	Total %
1.	T1 W9	Response to Text A and B	1,2	9,6	30
2.	T2 W9	Speaking/Writing	4,3	6,9	30
3.	T3 W4,5	Trial HSC			
		- Response to Text A and B	1,2	10	20
		- Writing	3	6	12
		- Speaking	4	4	8
				Total	100

## COMMUNITY AND FAMILY STUDIES HSC COURSE 2010

### ASSESSMENT COMPONENTS AND WEIGHTINGS

COMMUNITY AND FAMILY STUDIES		
COMPONENTS		WEIGHTING %
<u>No.</u> 1.	Knowledge and understanding of how the following impact on wellbeing: <ul style="list-style-type: none"> <li>• Resource management</li> <li>• Positive relationships</li> <li>• Range of societal factors</li> </ul>	40
2.	Skills in: <ul style="list-style-type: none"> <li>• Applying management processes to meet the needs of individuals, groups, families and communities</li> <li>• Planning to take responsible action to promote wellbeing</li> </ul>	25
3.	Knowledge and understanding about research, methodology and skills in researching critical thinking, analysing and communicating	35
	Total	100

These components will be assessed in the following manner:

### ASSESSMENT TASKS

Task No.	Due	Assessment Task Description	Components	Marks/Value	Total %
1.	T1 W10	Independent Research Project	3	20	20
2.	T2 W2	Case Study of Community Group	1,2,3	25	20
3.	T2 W10	Parenting Research Task	1,2,3	25	20
4.	T3 W2	Work Essay	1,2,3	15	20
5.	T3 W4,5	Trial HSC	1		20
					100

**DANCE**  
**HSC COURSE 2010**

**ASSESSMENT COMPONENTS AND WEIGHTINGS**

<b>DANCE</b>		
<b>COMPONENTS</b>		<b>WEIGHTING %</b>
<u>No.</u>		
1.	Core Performance	20
2.	Core Composition	20
3.	Core Appreciation	20
4.	Major Study	40
	Total	100

These components will be assessed in the following manner:

**ASSESSMENT TASKS**

Task No.	Due	Assessment Task Description	Components	Marks/ Value	Total %
1.	T4 W7	Core Appreciation (Part 1)	3	5	5
2.	T1	Core Composition	2	10	10
		Major Study	4	20	20
3.	T2	Core Performance	1	10	10
		Trial Exam for:			
		Core Performance	1	10	10
		Core Composition	2	10	10
		*Major Study (Performance OR Composition)	4	20	20
4.	T3	Core Appreciation (Part 2)	3	5	5
5.	T3	Trial Exam for:			
		Core Appreciation	3	10	10
		*Major Study (Appreciation OR Video OR Technology)	4	20	20

\*Students do one of these, not both.

## DRAMA HSC COURSE 2010

### ASSESSMENT COMPONENTS AND WEIGHTINGS

DRAMA		
COMPONENTS		WEIGHTING %
<u>No.</u>		
1.	Making	40
2.	Performing	30
3.	Critically Studying	30
	Total	100

These components will be assessed in the following manner:

### ASSESSMENT TASKS

Task No.	Due	Assessment Task Description	Components	Marks/Value	Total %
1.	T4 W9	Approaches to Acting Workshop	1	30	15
2.	T1 W9	Australian Theatre Extended Response	2,3	20	15
3.	T2 W1	Individual Project	1,2	40	15
4.	T2 W9	Group Performance	1,2	40	15
5a.	T3 W3	Trial HSC: Practical	1,2,3	60	20
5b.	T3 W4,5	Trial HSC: Theory	1,2,3	40	20
					100

**ECONOMICS**  
**HSC COURSE 2010**

**ASSESSMENT COMPONENTS AND WEIGHTINGS**

<b>ECONOMICS</b>		
<b>COMPONENTS</b>		<b>WEIGHTING %</b>
<u>No.</u>		
1.	Tests/Exams	50
2.	Stimulus/Skills	20
3.	Research/Investigation/Communication	30
	Total	100

These components will be assessed in the following manner:

**ASSESSMENT TASKS**

Task No.	Due	Assessment Task Description	Components	Marks/ Value	Total %
1.	T4 W7	Topic Test	1	20	20
2.	T1 W8	Stimulus Test	2	20	20
3.	T2 W5	Research	3	20	20
4.	T2 W11	Extended Response in class test	1+3	20	20
5.	T3 W4,5	Trial HSC Examination	1	20	20
					100

**ENGLISH ADVANCED**  
**HSC COURSE 2010**

**ASSESSMENT COMPONENTS AND WEIGHTINGS**

ENGLISH ADVANCED		
COMPONENTS		WEIGHTING %
<u>No.</u>		
1.	Area of Study: Belonging	40
2.	Module A: Comparative Study of Texts and Context	20
3.	Module B: Critical Study of Text	20
4.	Module C: Representation of Text	20
	Total	100

These components will be assessed in the following manner:

**ASSESSMENT TASKS**

Task No.	Due	Assessment Task Description	Components	Marks/Value	Total %
1A.	T4 W8	Unseen aural text analysis: Short and Extended Responses	1	15	15
1B.	T1 W2	Written response to unseen text and prescribed text	1	15	10
2.	T1 W8 (FSD)	Speaking Task	4	20	15
3.	T2 W5	Extended Response: Reading and Writing Task	2	35	15
4.	T2 W10	Viewing/Representing/Writing Task	3	20	15
5.	T3 W4,5	Trial HSC Examination	1,2,3,4	105	30
					100

**ENGLISH ESL  
HSC COURSE 2010**

**ASSESSMENT COMPONENTS AND WEIGHTINGS**

ENGLISH ESL		
COMPONENTS		WEIGHTING %
<u>No.</u>		
1.	Language Study within an Area of Study	50
2.	Module A: Living and Working in the Community	25
3.	Module B: Australian	25
	Total	100

These components will be assessed in the following manner:

**ASSESSMENT TASKS**

Task No.	Due	Assessment Task Description	Components	Marks/Value	Total %
1.	T4 W8	Speech and Representation	3	15	15
2.	T1 W7	AOS Short Answer Questions	1	20	20
3.	T2 W3	AOS Extended Response	1	20	20
4.	T2 W10	Speech and Written Analysis	2	15	15
5.	T3 W4,5	Trial HSC Examination	1,2,3	100	30
					100

**ENGLISH EXTENSION 1**  
**HSC COURSE 2010**

**ASSESSMENT COMPONENTS AND WEIGHTINGS**

ENGLISH EXTENSION 1		
COMPONENT		WEIGHTING
<u>No.</u>		
1.	Speaking / Listening	10
2.	Reading / Writing	30
3.	Viewing / Representing	10
	Total	50

These components will be assessed in the following manner:

**ASSESSMENT TASKS**

Task No.	Due	Assessment Task Description	Components	Marks/Value	Total %
1.	T1 W5	Speaking Task	1	20	20
2.	T2 W2	Imaginative writing using provided images	2,3	25	25
3.	T2 W10	Critical response – prescribed and related texts	2	25	25
4.	T3 W4,5	Trial HSC	2	30	40
					100

## ENGLISH EXTENSION 2 HSC COURSE 2010

### ASSESSMENT COMPONENTS AND WEIGHTINGS

Course Objective 1: Skills in extensive independent investigation

Course Objective 2: Skills in sustained composition

ENGLISH EXTENSION 2				
Tasks		COMPONENTS		TOTAL
		Objective 1	Objective 2	
<u>No.</u>				
1.	Viva Voce addressing the proposal for the Major Work	5	5	10
2.	Report – Detailing the impact of independent investigation on the development of the Major Work	10	5	15
3.	Draft of the Major Work and draft reflection statement	10	15	25
	Total	25	25	50

These components will be assessed in the following manner:

### ASSESSMENT TASKS

Task No.	Due	Assessment Task Description	Components	Marks/Value	Total %
1.	T1 W4	Viva Voce addressing the proposal for the Major Work	1,2	10	20
2.	T2 W2	Report – Detailing the impact of independent investigation on the development of the Major Work	1,2	15	30
3.	T2 W8	Draft of the Major Work and draft reflection statement	1,2	25	50
					100

## ENGLISH STANDARD HSC COURSE 2010

### ASSESSMENT COMPONENTS AND WEIGHTINGS

ENGLISH STANDARD		
COMPONENTS		WEIGHTING %
<u>No.</u>		
1.	Area of Study: Belonging	40
2.	Module A: Experience through Language	20
3.	Module B: Close Study of Text	20
4.	Module C: Texts and Society	20
	Total	100

These components will be assessed in the following manner:

### ASSESSMENT TASKS

Task No.	Due	Assessment Task Description	Components	Marks/Value	Total %
1.	T4 W8	Unseen aural and visual text analysis: Short and Extended Responses	1	30	25
2.	T1 W8 (FSD)	Speaking Task	2	20	15
3.	T2 W4	Viewing/Representing/Writing Task	4	25	15
4.	T2 W10	Extended Response: Reading and Writing Task	3	20	15
5.	T3 W4,5	Trial HSC Examination	1,2,3,4	105	30
					100

## EXTENSION HISTORY HSC COURSE 2010

### ASSESSMENT COMPONENTS AND WEIGHTINGS

EXTENSION HISTORY		
COMPONENTS		WEIGHTING %
<u>No.</u>		
1.	Historiography	20
2.	History Project	80
	Total	100

These components will be assessed in the following manner:

### ASSESSMENT TASKS

Task No.	Due	Assessment Task Description	Components	Marks/Value	Total %
1.	T4 W8	Project Proposal	2	5	10
2.	T2 W10	Process Log	2	5	10
3.	T2 W10	In Class Essay	1	5	10
4.	T3 W5	Personal Interest Essay (due)	2	30	60
5.	T3 W4,5	Trial HSC	1	5	10
					100

## FOOD TECHNOLOGY HSC COURSE 2010

### ASSESSMENT COMPONENTS AND WEIGHTINGS

FOOD TECHNOLOGY		
COMPONENTS		WEIGHTING %
<u>No.</u>		
1.	Experimentation and Preparation	30
2.	Research, analysis and communication	30
3.	Design, implementation and evaluation	20
4.	Knowledge and Understanding	20
	Total	100

These components will be assessed in the following manner:

### ASSESSMENT TASKS

Task No.	Due	Assessment Task Description	Components	Marks	Total %
1.	T4 W8	Written Report – In-depth study of food organisation	2	10	20
2.	T1 W10	Food Preservation Experiments and Written Report	1	15	20
3.	T2 W8	Food Product Development - Written - Practical - Oral	1,2,3	5,15,10	30
4.	T3 W4,5	Trial HSC Examination	4	20	30
					100

## FRENCH CONTINUERS HSC COURSE 2010

### ASSESSMENT COMPONENTS AND WEIGHTINGS

FRENCH CONTINUERS		
COMPONENTS		WEIGHTING %
<u>No.</u>		
1.	Speaking	20
2.	Listening and Responding	25
3.	Reading and Responding - Part A	25
	- Part B	15
4.	Writing	15
	Total	100

These components will be assessed in the following manner:

### ASSESSMENT TASKS

Task No.	Due	Assessment Task Description	Components	Marks	Total %
1.	T4 W8	Speaking/Listening/Reading A	1,2,3	6,7.5,7.5	21
2.	T1 W7	Reading A/ Reading B	3	7.5,9	16.5
3.	T2 W7	Speaking/Listening/Writing	1,2,4	6,7.5,9	22.5
4.	T3 W4,5	Trial HSC			
		- Speaking	1	8	
		- Listening + Responding	2	10	
		- Reading + Responding A & B	3	16	
		- Writing	4	6	40
					100

**FRENCH EXTENSION 1 UNIT**  
**HSC COURSE 2010**

**ASSESSMENT COMPONENTS AND WEIGHTINGS**

FRENCH EXTENSION 1 UNIT		
COMPONENTS		WEIGHTING %
<u>No.</u>		
1.	Response to Prescribed Text A	15
2.	Response to Prescribed Text B	10
3.	Writing	15
4.	Speaking	10
	Total	50

These components will be assessed in the following manner:

**ASSESSMENT TASKS**

Task No.	Due	Assessment Task Description	Components	Marks	Total %
1.	T1 W9	Response to Text A and B	1,2	9,6	30
2.	T2 W9	Speaking/Writing	4,3	6,9	30
3.	T3 W4,5	Trial HSC			
		- Response to Text A and B	1,2	10	20
		- Writing	3	6	12
		- Speaking	4	4	8
				Total	100

## GENERAL MATHEMATICS HSC COURSE 2010

The school assessment may use up to 30% of the preliminary course.

### ASSESSMENT COMPONENTS AND WEIGHTINGS

GENERAL MATHEMATICS – 2 UNIT		
COMPONENTS		WEIGHTING %
<u>No.</u>		
1.	Knowledge and Skills	40
2.	Applications	60
	Total	100

These components will be assessed in the following manner:

### ASSESSMENT TASKS

Task No.	Due	Assessment Task Description	Components	Marks/Value	Total %
1.	T4 W8	Written Test	1,2	5,10	15
2.	T1 W10	Written Test	1,2	5,10	15
3.	T2 W9	Written Test/Project	1,2	5,30	35
4.	T3 W4,5	Trial HSC	1,2	25,10	35
					100

# VET HOSPITALITY OPERATIONS

## HSC COURSE 2010

### VET HOSPITALITY OPERATIONS

#### Method of Assessment

Hospitality Operations assessment in Years 11 and 12 is **competency based**.

This means that a student is assessed on their performance of knowledge or skills, which is required by **industry standards**.

Competency based assessment is largely activity-based and practical. However, competency also implies that an individual displays an understanding of the knowledge, which underpins the practical performance.

A student is deemed competent when they:

- carry out the task to an acceptable industry standard
- organise and manage a range of different tasks
- respond appropriately to a breakdown in routine
- apply existing knowledge and skills to new situations
- use communication and interpersonal skills that suit the work environment.

Students have the opportunity to attempt a task **three** times in order to fulfil the requirements of a competency. Students will be required to purchase their own ingredients for any make-up practical lessons.

Competency based assessment is **ongoing** however there will also be an assessment schedule as follows:

Task No.	Due	Assessment Task Description	Total %
1.	T4 W9	Written Test - Develop and update hospitality industry knowledge	20
2.	T2 W7	Essay Question – Use Basic Methods of Cookery	30
3.	T3	Flow Charts – Implement Food Safety Procedures	20
4.	T3 W4,5	Trial HSC	30

It is important that students are prepared for their weekly competency assessment and are vigilant in their attendance so that students can meet the requirements.

The HSC exam is **optional** as not all students wish to achieve an ATAR. If you wish to have an ATAR at the end of the course you must sit for both the Trial HSC exam and the HSC exam.

NOTE: The first 6 core units and the first 4 units of the Commercial Cookery Strand are studied during the Preliminary year but are examined in the HSC.

The HSC and the Trial Examinations are based on the 6 Core Units and the 7 Commercial Cookery Units. These units are:

**CORE SECTION**

- SITHIND001A - Develop and Update Hospitality Industry Knowledge
- SITXCOM001A - Work with Colleagues and Customers
- SITXCOM002A - Work in a Socially Diverse Environment
- SITXOHS001A - Follow Workplace Hygiene Procedures
- SITXOHS001A - Follow Health, Safety and Security procedures
- SITXENV001A - Participate in Environmentally Sustainable Work Practices

**STRAND A – COMMERCIAL COOKERY**

- SITHCCC001A - Organise and Prepare Food
- SITHCC002A - Present Food
- SITHCCC003A - Receive and Store Kitchen Supplies
- SITHACS006A - Clean Premises and Equipment
- SITHCCC004A - Clean and Maintain Kitchen Premises
- SITHCCC005A - Use Basic Methods of Cookery
- SITXFSA001A - Implement Food Safety Procedures

**Other units studied but not directly examined in the Trial and HSC are:**

- SITHCCC07A - Prepare Sandwiches
- SITHCCC006A - Prepare Appetisers and Salads
- SITHCCC008A - Prepare Stocks, Sauces and Soups

## INDONESIAN CONTINUERS HSC COURSE 2010

### ASSESSMENT COMPONENTS AND WEIGHTINGS

INDONESIAN CONTINUERS		
COMPONENTS		WEIGHTING %
<u>No.</u>		
1.	Speaking	20
2.	Listening and Responding	25
3.	Reading and Responding - Part A	25
	- Part B	15
4.	Writing	15
	Total	100

These components will be assessed in the following manner:

### ASSESSMENT TASKS

Task No.	Due	Assessment Task Description	Components	Marks	Total %
1.	T4 W8	Speaking/Listening/Reading A	1,2,3	6,7.5,7.5	21
2.	T1 W7	Reading A/ Reading B	3	7.5,9	16.5
3.	T2 W7	Speaking/Listening/Writing	1,2,4	6,7.5,9	22.5
4.	T3 W4,5	Trial HSC			
		- Speaking	1	8	
		- Listening + Responding	2	10	
		- Reading + Responding A & B	3	16	
		- Writing	4	6	40
					100

**INDONESIAN EXTENSION 1 UNIT**  
HSC COURSE 2010

**ASSESSMENT COMPONENTS AND WEIGHTINGS**

INDONESIAN EXTENSION 1 UNIT		
COMPONENTS		WEIGHTING %
<u>No.</u>		
1.	Response to Prescribed Text A	15
2.	Response to Prescribed Text B	10
3.	Writing	15
4.	Speaking	10
	Total	50

These components will be assessed in the following manner:

**ASSESSMENT TASKS**

Task No.	Due	Assessment Task Description	Components	Marks	Total %
1.	T1 W9	Response to Text A and B	1,2	9,6	30
2.	T2 W9	Speaking/Writing	4,3	6,9	30
3.	T3 W4,5	Trial HSC			
		- Response to Text A and B	1,2	10	20
		- Writing	3	6	12
		- Speaking	4	4	8
				Total	100

## ITALIAN BEGINNERS HSC COURSE 2010

### ASSESSMENT COMPONENTS AND WEIGHTINGS

ITALIAN BEGINNERS		
COMPONENTS		WEIGHTING %
<u>No.</u>		
1.	Listening Skills – Aural Comprehension, the ability to understand spoken Italian	30
2.	Speaking Skills – Oral Communication, the ability to converse	20
3.	Reading Skills – the ability to understand written Italian	30
4.	Writing Skills – the ability to communicate written Italian	20
	Total	100

These components will be assessed in the following manner:

### ASSESSMENT TASKS

Task No.	Due	Assessment Task Description	Components	Marks	Total %
1.	T4 W9	Reading and Writing	3,4	6,4	10
2.	T1 W8/9	Speaking and Listening, Reading and Writing	2,1,3,4	4,6,6,4	20
3.	T2 W9	Speaking and Listening, Reading and Writing	2,1,3,4	4,6,6,4	20
4.	T3 W3	Speaking and Listening	2,1	4,6	10
6.	T3 W4,5	Trial HSC - Listening - Speaking - Reading - Writing	1 2 3 4	12 8 12 8	40
					100

## ITALIAN CONTINUERS HSC COURSE 2010

### ASSESSMENT COMPONENTS AND WEIGHTINGS

ITALIAN CONTINUERS		
COMPONENTS		WEIGHTING %
<u>No.</u>		
1.	Speaking	20
2.	Listening and Responding	25
3.	Reading and Responding - Part A	25
	- Part B	15
4.	Writing	15
	Total	100

These components will be assessed in the following manner:

### ASSESSMENT TASKS

Task No.	Due	Assessment Task Description	Components	Marks	Total %
1.	T4 W8	Speaking/Listening/Reading A	1,2,3	6,7.5,7.5	21
2.	T1 W7	Reading A/ Reading B	3	7.5,9	16.5
3.	T2 W7	Speaking/Listening/Writing	1,2,4	6,7.5,9	22.5
4.	T3 W4,5	Trial HSC			
		- Speaking	1	8	
		- Listening + Responding	2	10	
		- Reading + Responding A & B	3	16	
		- Writing	4	6	40
					100

**ITALIAN EXTENSION 1 UNIT**  
**HSC COURSE 2010**

**ASSESSMENT COMPONENTS AND WEIGHTINGS**

ITALIAN EXTENSION 1 UNIT		
COMPONENTS		WEIGHTING %
<u>No.</u>		
1.	Response to Prescribed Text A	15
2.	Response to Prescribed Text B	10
3.	Writing	15
4.	Speaking	10
	Total	50

These components will be assessed in the following manner:

**ASSESSMENT TASKS**

Task No.	Due	Assessment Task Description	Components	Marks	Total %
1.	T1 W9	Response to Text A and B	1,2	9,6	30
2.	T2 W9	Speaking/Writing	4,3	6,9	30
3.	T3 W4,5	Trial HSC			
		- Response to Text A and B	1,2	10	20
		- Writing	3	6	12
		- Speaking	4	4	8
				Total	100

## JAPANESE BEGINNERS HSC COURSE 2010

### ASSESSMENT COMPONENTS AND WEIGHTINGS

JAPANESE BEGINNERS		
COMPONENTS		WEIGHTING %
<u>No.</u>		
1.	Listening: Interacting and understanding texts	30
2.	Reading: Interacting and understanding texts	30
3.	Speaking: Interacting and producing texts	20
4.	Writing: Interacting and producing texts	20
	Total	100

These components will be assessed in the following manner:

### ASSESSMENT TASKS

Task No.	Due	Assessment Task Description	Components	Marks	Total %
1.	T4 W8	Reading & Writing	1,2,3,4	20	
2.	T1 W7	Speaking & Listening	1,2,3,4	20	
3.	T2 W7	Reading & Writing	1,2,3,4	20	60
4.	T3 W4,5	Trial HSC			
		- Listening	1	12	
		- Reading	2	12	
		- Speaking	3	8	
		- Writing	4	8	40
					100

**LEGAL STUDIES**  
**HSC COURSE 2010**

**ASSESSMENT COMPONENTS AND WEIGHTINGS**

<b>LEGAL STUDIES</b>		
<b>TOPICS/COMPONENTS</b>		<b>WEIGHTING %</b>
<u>No.</u>		
1.	Law and Society	25
2.	Crime	25
3.	Family	25
4.	World Order	25
	Total	100

These components will be assessed in the following manner:

**ASSESSMENT TASKS**

Task No.	Due	Assessment Task Description	Components	Marks/Value	Total %
1.	T4 W7/8	Test + Oral	1	10,10	20
2.	T1 W5	Topic Test	2	20	20
3.	T2 W4	Research/Essay	3	20	20
4.	T3 W2	Research/Essay	4	20	20
5.	T3 W4,5	Trial HSC	1,2,3,4	20	20
					100

**MATHEMATICS 2 UNIT**  
**HSC COURSE 2010**

**ASSESSMENT COMPONENTS AND WEIGHTINGS**

<b>MATHEMATICS – 2 UNIT</b>		
<b>COMPONENTS</b>		<b>WEIGHTING %</b>
<u>No.</u>		
1.	Knowledge, Understanding and Skills	80
2.	Application	20
	Marks	100

These components will be assessed in the following manner:

**ASSESSMENT TASKS**

Task No.	Due	Assessment Task Description	Components	Marks/Value	Total %
1.	T4 W8	Written Test	1,2	18,4	22
2.	T1 W10	Written Test	1,2	18,4	22
3.	T2 W9	Written Test	1,2	18,4	22
4.	T3 W4,5	Trial HSC	1,2	26,8	34
					100

**MATHEMATICS EXTENSION 1**  
**HSC COURSE 2010**

**ASSESSMENT COMPONENTS AND WEIGHTINGS**

<b>MATHEMATICS EXTENSION 1 – 3 UNIT COMMON</b>		
<b>COMPONENTS</b>		<b>WEIGHTING %</b>
<u>No.</u>		
1.	Knowledge, Understanding and Skills	70
2.	Application	30
	Marks	100

<b>MATHEMATICS EXTENSION 1 – 3 UNIT ADDITIONAL</b>		
<b>COMPONENTS</b>		<b>WEIGHTING %</b>
<u>No.</u>		
1.	Knowledge, Understanding and Skills	35
2.	Application	15
	Marks	50

These components will be assessed in the following manner:

**ASSESSMENT TASKS**

Task No.	Due	Assessment Task Description	Components	Marks/Value	Total %
1.	T4 W9	Written Test	1,2	10,5	15
2.	T1 W10	Written Test	1,2	15,10	25
3.	T2 W8	Written Test	1,2	15,10	25
4.	T3 W4,5	Trial HSC	1,2	25,10	35
					100

**MATHEMATICS EXTENSION 2**  
**HSC COURSE 2010**

**ASSESSMENT COMPONENTS AND WEIGHTINGS**

<b>MATHEMATICS EXTENSION 2 – 4 UNIT ADDITIONAL</b>		
<b>COMPONENTS</b>		<b>WEIGHTING %</b>
<u>No.</u>		
1.	Knowledge, Understanding and Skills	60
2.	Application	40
	Marks	100

These components will be assessed in the following manner:

**ASSESSMENT TASKS**

Task No.	Due	Assessment Task Description	Components	Marks/Value	Total %
1.	T4 W9	Written Test	1,2	10,5	15
2.	T1 W10	Written Test	1,2	15,10	25
3.	T2 W9	Written Test	1,2	15,10	25
4.	T3 W4,5	Trial HSC	1,2	20,15	35
					100

## MODERN HISTORY HSC COURSE 2010

### ASSESSMENT COMPONENTS AND WEIGHTINGS

MODERN HISTORY		
COMPONENTS		WEIGHTING %
<u>No.</u>		
1.	Core: WW1 1914-1918	25
2.	National Study: Germany 1918-1939	25
3.	Personality in 20 <sup>th</sup> Century: Leni Riefenstahl	25
4.	Peace & Conflict Studies: Conflict in Indochina 1954-1979	25
	Total	100

These components will be assessed in the following manner:

### ASSESSMENT TASKS

Task No.	Due	Assessment Task Description	Components	Marks/ Value	Total %
1.	T4 W7	WW1 1914-1918: Res. 5 + Src. 5 + Oral 10	1	20	20
2.	T1 W8	Germany 1918-39: Res. 10 + Src. 10	2	20	20
3.	T2 W7	Leni Riefenstahl: Res. 10 + Src. 10	3	20	20
4.	T3 W4,5	Trial HSC	1,2,3,4	5,5,5,25	40
					100

## MUSIC 1, MUSIC 2 HSC COURSES 2008

### ASSESSMENT COMPONENTS AND WEIGHTINGS

<b>MUSIC 1</b>				
Task No.	Due	Assessment Task Description	Topic No.	Value
1.	T1 W8	<b>Musicology:</b> research and viva voce	1 or 2	10
2.	T1 W10	<b>Performance:</b> 2 pieces	1 and/or 2	10
3.	T2 W3	<b>Aural:</b> written paper in class	-	10
4.	T2 W8	<b>Composition &amp; folio</b>	2 or 3	10
5A.	T3 W4,5	<b>Aural:</b> written paper in class (Trial HSC)	-	15
5B.	T3 W4,5	<b>Internal Elective Phase</b> (Trial HSC) Elective 1: Composition or Musicology or Performance	1	15
		Elective 2: Composition or Musicology or Performance	2	15
		Elective 3: Composition or Musicology or Performance	3	15
				100

<b>MUSIC 2</b>				
Task No.	Due	Assessment Task Description	Topic No.	Value
1.	T1 W5	Aural Core: written paper and sight singing		10
2.	T1 W10	Performance Core: 2 pieces and viva	Mandatory & Additional	20
3.	T2 W9	Composition and Folio	Mandatory	20
4.	T3 W2	Musicology Folio	Additional	10
5.	T3 W4,5	Aural Core: written paper and sight singing (Trial HSC)		10
6.	T3 W4,5	(Performance/Musicology/Composition Elective: 2 pieces or written submission) (Trial HSC)		20
				100

## MUSIC EXTENSION HSC COURSES 2008

### MUSIC EXTENSION INTERNAL ASSESSMENT (50% of HSC mark)

(Only one Learning Experience selected for the course, from Composition, Performance and Musicology.)

<b>MUSIC EXTENSION</b>			
Task No.	Due	Assessment Task Description	Value
1.	T1 W8/9	One Elective: selected Performance TWO contrasting pieces (15 mins) OR  Composition TWO pieces submitted & folio (6 mins) OR  Musicology ONE essay (2000 words)	20
2.	T2 W8	ONE viva voce on Performance Repertoire and Critique OR Composition Folio OR Musicology Folio	5
3.	T3 Trial	Performance Elective (20 mins max) ONE ensemble piece ONE solo item ONE solo item  Composition Elective (6 mins max) TWO contrasting pieces or movements & folio  Musicology Elective ONE essay (3000 words) and folio	25
			50

**PERSONAL DEVELOPMENT, HEALTH AND  
PHYSICAL EDUCATION  
HSC COURSE 2010**

**ASSESSMENT COMPONENTS AND WEIGHTINGS**

PERSONAL DEVELOPMENT, HEALTH AND PHYSICAL EDUCATION		
COMPONENTS		WEIGHTING %
<u>No.</u>		
1.	Core 1: Health Priorities in Australia	30
2.	Core 2: Factors Affecting Performance	30
3.	Option 1: The Health of Young People	20
4.	Option 3 OR Option 4 OR Option 5	20
	Total	100

These components will be assessed in the following manner:

**ASSESSMENT TASKS**

Task No.	Due	Assessment Task Description	Components	Marks/Value	Total %
1.	T4 W9	In Class Essay & Research	1	20	20
2.	T1 W6	Report & Research	3	15	15
3.	T2 W5	Written Report & Lab	2	20	20
4.	T2 W9	Extended Responses	4	15	15
5.	T3 W4,5	Trial Exam	1,2,3,4	10,10,5,5	30
					100

**PHYSICS**  
**HSC COURSE 2010**

**ASSESSMENT COMPONENTS AND WEIGHTINGS**

<b>PHYSICS</b>		
<b>COMPONENTS</b>		<b>WEIGHTING %</b>
<u>No.</u>		
1.	Knowledge and understanding	40
2.	Skills in planning and conducting first-hand investigations	30
3.	Skills in scientific thinking and problem solving	30
	Total	100

These components will be assessed in the following manner:

**ASSESSMENT TASKS**

Task No.	Due	Assessment Task Description	Components	Marks/Value	Total %
1.	T4 W6	Practical Test	2	15	15
2.	T1 W8/9	Open Ended Investigation	2,3	15,5	20
3.	T2 W7	Test	1,3	10,10	20
4.	T3 W2	Research Assignment	1,3	5,10	15
5.	T3 W4,5	Trial HSC	1,3	25,5	30
					100

## SENIOR SCIENCE HSC COURSE 2010

### ASSESSMENT COMPONENTS AND WEIGHTINGS

SENIOR SCIENCE		
COMPONENTS		WEIGHTING %
<u>No.</u>		
1.	Knowledge and understanding	40
2.	Skills in planning and conducting first-hand investigations	30
3.	Skills in scientific thinking and problem solving	30
	Total	100

These components will be assessed in the following manner:

### ASSESSMENT TASKS

Task No.	Due	Assessment Task Description	Components	Marks/Value	Total %
1.	T4 W9	Open-ended Investigation	2,3	10,10	30
2.	T1 W8	Test	1	20	20
3.	T2 W6	Practical	2,3	20	20
4.	T3 W4,5	Trial HSC	1,3	20,10	30
					100

## SOCIETY AND CULTURE HSC COURSE 2010

### ASSESSMENT COMPONENTS AND WEIGHTINGS

SOCIETY AND CULTURE		
COMPONENTS		WEIGHTING %
<u>No.</u>		
1.	Core	40
2.	Depth Study One	30
3.	Depth Study Two	30
	Total	100

These components will be assessed in the following manner:

### ASSESSMENT TASKS

Task No.	Due	Assessment Task Description	Components	Marks/ Value	Total %
1.	T4 W7	Methodologies application: PIP Statement of Intent PIP plan and work so far	1	20	10
2.	T1 W5	Social & Cultural Continuity & Change – in class test	1	10	10
	T1 W8	<b>BOS mandated</b> PIP progress report – log and methodologies	-	-	-
	T2 W1	PIP draft <b>one</b>	-	-	-
3.	T2 W4	Depth Study One: Content Analysis	2	20	20
	T2 W8	<b>Final</b> PIP draft			
4.	T3 W2	Depth Study Two: Oral Presentation	3	20	20
5.	T3 W4,5	Trial HSC Examination	1,2,3	10,10,10	30
					100

**NB:** PIP deadlines are included above. They are non-assessable, but the BOS requires the school to monitor the PIP's development throughout the course to ensure research ethics are met/maintained.

## SOFTWARE DESIGN AND DEVELOPMENT HSC COURSE 2010

The school assessment is based entirely on the HSC Course.

### ASSESSMENT COMPONENTS AND WEIGHTINGS

SOFTWARE DESIGN AND DEVELOPMENT – 2 UNIT		
COMPONENTS		WEIGHTING %
<u>No.</u>		
1.	Knowledge and understanding about development and impact of software solutions, the software development cycle	20
2.	Design and development of software solutions	35
3.	Project management techniques, including documentation, teamwork and communication	20
4.	Project	25
	Total	100

These components will be assessed in the following manner:

### ASSESSMENT TASKS

Task No.	Due	Assessment Task Description	Components	Marks/Value	Total %
1.	T4 W9	Written Test (Option Topic)	1,2	5,10	15
2.	T1 W8/9	Written Test	1,3	5,5	10
3.	T2 W8	Written Test	2,3,4	5,5,10	20
4.	T3 W2	Project	2,3,4	10,5,15	30
5.	T3 W4,5	Trial HSC	1,2,3	10,10,5	25
					100

**STUDIES OF RELIGION 2 UNIT**  
HSC COURSE 2010

**ASSESSMENT COMPONENTS AND WEIGHTINGS**

STUDIES OF RELIGION 2 UNIT		
COMPONENTS		WEIGHTING %
<u>No.</u>		
1.	Section 1 – Depth Studies 1, 2 & 3	50
2.	Section 2 – Religion and Peace	20
3.	Section 3 – Religion and Belief Systems in Australia Post-1945	15
4.	Section 4 – Religion and Non-Religion	15
	Total	100

These components will be assessed in the following manner:

**ASSESSMENT TASKS**

Task No.	Due	Assessment Task Description	Components	Marks/ Value	Total %
1.	T4 W7	Religion and Non-Religion: Research 15	4	15	15
2.	T1 W7	Hinduism: Stimulus 20	1	20	20
3.	T2 W3	Buddhism: Exam 10	1	10	10
4.	T2 W7	Islam: Oral 20	1	20	20
5.	T3 W4,5	Trial HSC: Exam 35	2,3	35	35
					100

**STUDIES OF RELIGION 1 UNIT**  
**HSC COURSE 2010**

**ASSESSMENT COMPONENTS AND WEIGHTINGS**

STUDIES OF RELIGION 1 UNIT		
COMPONENTS		WEIGHTING %
<u>No.</u>		
1.	Section 1 – Depth Studies 1 & 2	70
2.	Section 2 – Religion and Belief Systems in Australia Post-1945	30
	Total	100

These components will be assessed in the following manner:

**ASSESSMENT TASKS**

Task No.	Due	Assessment Task Description	Components	Marks/ Value	Total %
1.	T4 W7	Religion and Belief Systems in Australia Post-1945: Research 20	2	20	20
2.	T1 W7	Hinduism: Stimulus 30	1	30	30
3.	T2 W7	Buddhism: Exam 20	1	20	20
4.	T3 W4,5	Trial HSC: Exam 30	1,2	30	30
					100

## TEXTILES AND DESIGN HSC COURSE 2010

### ASSESSMENT COMPONENTS AND WEIGHTINGS

TEXTILES AND DESIGN		
COMPONENTS		WEIGHTING %
<u>No.</u>		
1.	Knowledge and understanding of textiles and the textile industry	50
2.	Skills in design, manipulation, experimentation, analysis, manufacture and selection of textiles for specific end purposes using appropriate technologies	50
	Total	100

These components will be assessed in the following manner:

### ASSESSMENT TASKS

Task No.	Due	Assessment Task Description	Components	Marks/Value	Total %
1.	T4 W8	Presentation	2	20	20
2.	T1 W4	Investigation of Australian Textile Industry	1	20	20
3.	T2 W7	Experimentation	1,2	5,15	20
4.	T3 W3	Management Diary	2	15	15
5.	T3 W4,5	Trial HSC Written Exam	1	25	25
					100

**VISUAL ART**  
**HSC COURSE 2010**

**ASSESSMENT COMPONENTS AND WEIGHTINGS**

<b>VISUAL ART</b>		
<b>COMPONENTS</b>		<b>WEIGHTING %</b>
<u>No.</u>		
1.	Art History and Criticism	50
2.	Art Making	50
	Total	100

These components will be assessed in the following manner:

**ASSESSMENT TASKS**

Task No.	Due	Assessment Task Description	Components	Marks/ Value	Total %
1A.	T4 W8	Art research	1	10	10
1B.	T4 W8	Oral presentation and Visual Arts Diary	2	10	10
2.	T1 W5	Case studies and essay	1	20	20
3.	T2 W5	Visual Arts Diary and Body of Work	2	15	15
4.	T3 W2	B.O.W. Exhibition	2	25	25
5.	T3 W4,5	Trial HSC	1	20	20
					100

## 2010 HSC CALENDAR OF ASSESSMENT TASKS

WK	TERM 4 - 2009 19 October-18 Dec	TERM 1 - 2010 27 January-1 April	TERM 2 - 2010 19 April -2 July	TERM 3 - 2010 19 July-24 September
1			Drama, Society & Culture	Business Studies
2		English Advanced	Community & Family Studies, English Ext.1, English Ext.2	Community & Family Studies, Legal Studies, Music 1, Music 2, Physics, Society & Culture, Software Design & Development, Visual Art
3			Biology, Business Studies, ESL, Music 1, Studies of Religion I	Drama, Italian Beg., Textile & Design
4		English Ext.2, Music 1, Textiles & Design	English St., Legal Studies, Society & Culture	<b>TRIAL HSC EXAMS</b>
5		Business Studies, English Ext.1, Legal Studies, Music 2, Society & Culture, Visual Art	Economics, English Adv., PDHPE, Visual Art	Ext. History <b>TRIAL HSC EXAMS</b>
6	Physics	Biology, Chinese BG, PDHPE	Chemistry, Senior Science	
7	Chemistry, Dance, Economics, Legal Studies, Modern History, Society & Culture, Studies of Religion I, Studies of Religion II	Chinese Cont., ESL, French Cont., Hospitality, Indonesian Cont., Italian Cont., Japanese Beg., Studies of Religion I, Studies of Religion II	Chinese Cont., French Cont., Indonesian Cont., Italian Cont., Japanese Beg., Modern History, Physics, Studies of Religion I, Studies of Religion II, Textiles & Design	
8	Ancient History, Biology, Chinese BG, Chinese Cont., English Adv., ESL, English St., Ext. History, Food Technology, French Cont., General Maths, Indonesian Cont., Italian Cont., Japanese Beg., Maths 2U, Music Ext., Textiles & Design, Visual Art	Chemistry, Economics, English Adv., English St., Italian Beg., Modern History, Music 1, Music Ext., Physics, Senior Science, Society & Culture, Software Design & Development	Chinese BG, English Ext.2, Food Technology, Maths Ext.1, Music 1, Music Ext., Society & Culture, Software Design & Development	
9	Business Studies, Drama, Hospitality, Italian Beg., Italian Ext.1, Maths Ext.1, Maths Ext.2, PDHPE, Senior Science, Software Design & Development	Ancient History, Chinese Ext., Drama, French Ext., Indonesian Ext.1, Italian Ext.1	Ancient History, Chinese Ext., Drama, French Ext., General Maths, Indonesian Ext.1, Italian Beg., Maths 2U, Maths Ext.2, Music 2, PDHPE	
10		Community & Family Studies, Food Technology, General Maths, Maths 2U, Maths Ext.1, Maths Ext.2, Music 1, Music 2	Community & Family Studies, English Adv., ESL, English Ext.1, English St., Extension History	
11			Economics	

Dance, T1, T2, T3

## 2010 HSC CALENDAR OF ASSESSMENT TASKS – PERSONAL PLANNER

WK	TERM 4 - 2009 19 October-18 Dec	TERM 1 - 2010 27 January-1 April	TERM 2 - 2010 19 April -2 July	TERM 3 - 2010 19 July-24 September
1				
2				
3				
4				TRIAL HSC EXAMS
5				TRIAL HSC EXAMS
6				
7				
8				
9				
10				
11				

This page may be detached for use.

These courses not run in 2010. Keep information on file for 2011.

## FRENCH BEGINNERS HSC COURSE 2007

### ASSESSMENT COMPONENTS AND WEIGHTINGS

FRENCH BEGINNERS		
COMPONENTS		WEIGHTING %
<u>No.</u>		
1.	Listening Skills – Aural Comprehension, the ability to understand spoken Italian	35
2.	Speaking Skills – Oral Communication, the ability to converse	20
3.	Reading Skills – the ability to understand written French	35
4.	Writing Skills – the ability to communicate written French	10
	Total	100

These components will be assessed in the following manner:

### ASSESSMENT TASKS

Task No.	Due	Assessment Task Description	Components	Marks	Total %
1.	T4 W10	Reading	3		
2.	T1 W6	Speaking	2		
3.	T1 W10	Writing	4		
4.	T2 W4	Listening	1		
5.	T2 W9	Reading/Writing	3,4		
6.	T3 W2	Listening/Speaking	1,2		60%
7.	T3 W4,5	Trial HSC			
		- Listening	1	30	
		- Speaking	2	25	
		- Reading	3	30	
		- Writing	4	15	40%
				Total	100%

## EARTH AND ENVIRONMENTAL SCIENCE

### HSC COURSE 2007

#### ASSESSMENT COMPONENTS AND WEIGHTINGS

EARTH AND ENVIRONMENTAL SCIENCE		
COMPONENTS		WEIGHTING %
<u>No.</u>		
1.	Tectonic Impacts	25
2.	Environments Through Time	25
3.	Caring the Country	25
4.	Option	25
	Total	100

These components will be assessed in the following manner:

#### ASSESSMENT TASKS

Task No.	Due	Assessment Task Description	Components	Marks/Value	Total %
1.	T 4 W6	Open Ended Investigation	3	20	20
2.	T1 W4	Test	1	20	20
3.	T2 W2	Practical	2	15	15
4.	T2 W8	Open Ended Investigation	4	15	15
5.	T3 W4,5	Trial HSC	1,2,3,4	5,10,5,10	30

# GEOGRAPHY

## HSC COURSE 2007

### ASSESSMENT COMPONENTS AND WEIGHTINGS

GEOGRAPHY		
COMPONENTS		WEIGHTING %
<u>No.</u>		
1.	Fieldwork	10
2.	Stimulus	30
3.	Geographic Writing	40
4.	Research	20
	Total	100

These components will be assessed in the following manner:

### ASSESSMENT TASKS

Task No.	Due	Assessment Task Description	Components	Marks/Value	Total %
1.	T4 W10	Field observations	1	5	5
2.	T1 W3	Multiple choice Short answer Extended response	2,3	5,10	15
3.	T2 W2	Multiple choice Short answer Extended response	1,2,3	5,5,10	20
4.	T3 W1	Research task	4	20	20
5.	T3 W4,5	Trial HSC	2,3	20,20	40

This was extracted from Year 11 Assess Booklet

**VISUAL DESIGN – 1 UNIT**  
HSC COURSE 2006

**ASSESSMENT COMPONENTS AND WEIGHTINGS**

VISUAL DESIGN 1 UNIT		
COMPONENTS		WEIGHTING %
<u>No.</u>		
1.	Making	70
2.	Critical and Historical Studies	30
	Total	100

These components will be assessed in the following manner:

**ASSESSMENT TASKS**

Task No.	Due	Assessment Task Description	Components	Marks/Value	Total %
1.	T1 W4	Written Assignment & VD Diary	2	10	10
2.	T1 W9	Practical work with VD Diary	1,2	20,5	25
3.	T2 W9	2 <sup>nd</sup> Practical task with VD Diary	1,2	25,5	30
4.	T3 W4	Written Assignment	2	10	10
5.	T3 W9	3 <sup>rd</sup> Practical task with VD Diary	1	25	25

**PHOTOGRAPHY 2 UNIT**  
**HSC COURSE 2008**

**ASSESSMENT COMPONENTS AND WEIGHTINGS**

PHOTOGRAPHY 2 UNIT		
COMPONENTS		WEIGHTING %
<u>No.</u>		
1.	Making Photography	70
2.	Studying Photography	30
	Total	100

These components will be assessed in the following manner:

**ASSESSMENT TASKS**

Task No.	Due	Assessment Task Description	Components	Marks/ Value	Total %
1.	T1 W4	Photo making	1	20	20
2.	T1 W5	Written assignment/oral presentation	2	10	10
3.	T2 W4	Photo making	1	20	20
4.	T2 W7	Written assignment/oral presentation	2	10	10
5.	T3 W2	Photo – studying test	2	10	10
6.	T3 W3	Photo – making	1	30	30
					100

**EXPLORING EARLY CHILDHOOD**  
**HSC COURSE 2010**  
**(Content Endorsed Course)**

**ASSESSMENT COMPONENTS AND WEIGHTINGS**

<b>EXPLORING EARLY CHILDHOOD</b>		
<b>COMPONENTS</b>		<b>WEIGHTING %</b>
<u>No.</u>		
1.	Knowledge and Understanding	50
2.	Skills	50
	Total	100

These components will be assessed in the following manner:

**ASSESSMENT TASKS**

Task No.	Due	Assessment Task Description	Components	Marks/Value	Total %
1.	T4 W7	Baby Diary	1	25	25
2.	T1 W8/9	Children's Literature Book	1,2	25	25
3.	T2 W6	Food and Nutrition research and practical	1,2	25	25
4.	T3 W4,5	Trial HSC Examination	1	25	25
					100

## VET INFORMATION TECHNOLOGY HSC COURSE 2010

VET Information Technology Certificate III provides the skills and knowledge for an individual to be competent in introductory ICT 'technical' functions. It is designed to support information activities in the workplace and to achieve a degree of self-sufficiency as an advanced ICT 'user', giving employees a degree of confidence in an individual's usefulness in the workplace.

<b>COMPULSORY Attempt ALL units</b>	
<b>Unit code</b>	<b>Unit title</b>
BSBCM106A	Follow workplace safety procedures
ICAU1128A	Operate a personal computer
ICAU2005A	Operate computer hardware
ICAU2006A	Operate computing packages
<b>ICAD2012A</b>	<b>Design organisational documents using computing packages</b>
<b>ICAU3004A</b>	<b>Apply occupational health and safety procedures</b>
<b>ICAU2013A</b>	<b>Integrate commercial computing packages</b>
<b>ICAU2231A</b>	<b>Use computer operating system</b>
<b>ICAW2001A</b>	<b>Work effectively in an IT environment</b>
<b>ICAW2002A</b>	<b>Communicate in the workplace</b>
<b>ICAD3218A</b>	<b>Create user documentation</b>
<b>ICAI3020A</b>	<b>Install and optimise operating system software</b>
<b>ICAS3031A</b>	<b>Provide advice to clients</b>
<b>ICAS3234A</b>	<b>Care for computer hardware</b>
<b>ICAT3025A</b>	<b>Run standard diagnostic tests</b>
ICAB4169A	Use development software and IT tools to build a basic website

- The table shows units studied in Preliminary 2008 (Units 1 – 10), and units to be studied in HSC 2009 (Units 11 – 16).
- Units in bold (Units 6 – 15) will be examined in the HSC. (Note that this includes 6 units from Preliminary.)
- The HSC exam for VET Information Technology is optional. The result from the HSC exam is used to contribute to the calculation of the ATAR.
- The HSC exam is a 2 hour written paper.
- In addition to the HSC qualification, VET IT students are also accredited with a Statement of Attainment towards Certificate III IT (ICA30105).
- Students of VET IT who hold a particular interest in the industry are able to undertake a Specialisation Study. This consists of additional specialisation units, additional class and work placement hours. The completion of a Specialisation Study provides the student with a qualification of a Certificate III in IT (Specialisation Study).

## ASSESSMENT TASKS

Task No.	Due	Units Assessed	Task Description	%
1	T4 W7	ICAW2001A Work effectively in an IT environment ICAW2002A Communicate in the workplace	Written test	20
2	T1 W6	ICAD3218A Create user documentation ICAI3020A Install and optimise operating system software (Part I)	Written test	20
3	T2 W6	ICAI3020A Install and optimise operating system software (Part II)	Presentation and/or demonstration	10
	T2 W8	ICAI3020A Install and optimise operating system software (Part III) ICAT3025A Care for computer hardware		10
4	T3 W4,5	Trial HSC All HSC examinable units (see table – bold)	2 Hour written paper	40