

YEAR 11 ASSESSMENT POLICY & PROCEDURES 2009

CONTENTS

1) General Information	Page No.
Special Provisions.....	3
Board of Studies Requirements	3
The Requirements of the Education Act 1990 (Attachment 1).....	4
Pattern of Study Requirements Checklist for the 2009 HSC (Attachment 2)	5
Burwood Girls High School Preliminary Assessment Policy & Procedures	6
1. General Information	6
2. Notification of Assessment Results	6
3. Student Responsibilities.....	6
4. Assessment Task Procedures	7
5. Unsatisfactory Completion of Course.....	8
6. What Happens if you Miss a Task?.....	9
7. Cheating or Malpractice	9
8. Reviews and Appeals.....	9
9. Information and Advice	10
Assessment Task Flow Chart	11
Glossary of Key Words	12
Example of Illness, Accident or Misadventure form	13
Sample Letter: Official Warning of 'N' Determination (Preliminary)	14
2) Subject Information	
Ancient History	16
Biology	17
Business Studies	18
Chemistry	19
Chinese Background Speakers	20
Chinese Continuers	21
Community and Family Studies	22
Dance.....	23
Drama	24
Economics	25
English Advanced	26
English as a Second Language	27
English Extension	28
English Fundamentals 1 Unit	29
Food Technology	30
French Continuers	31
General Mathematics.....	32
Hospitality (VET Course)	33
Indonesian Continuers	34
Italian Beginners	35
Italian Continuers	36
Japanese Beginners	37
Legal Studies	38
Mathematics 2 Unit	39
Mathematics Extension 1 – 2 Unit Common.....	40
Mathematics Extension 1 – 3 Unit Additional.....	40
Modern History.....	41

2) Subject Information (continued)	Page No.
Music 1	42
Music 2	43
Personal Development, Health & Physical Education	44
Photography, Video & Digital Imaging 2 Unit	45
Photography, Video & Digital Imaging 1 Unit	46
Physics	47
Society and Culture	48
Software Design & Development	49
Standard English	50
Studies of Religion 2 Unit	51
Studies of Religion 1 Unit	52
Textiles and Design	53
Visual Arts	54

Appendix

Calendar of Assessment Tasks	55
Student Planner of Assessment Tasks	56

VET = Vocational Education & Training

Note: The following courses are not being run in 2009:

Earth & Environmental Science, Exploring Early Childhood, French Beginners, Geography, Information Processes & Technology, Information Technology (VET), Screen Production Assistance Certificate II & III (VET), Senior Science, Sport Lifestyle & Recreation, Visual Design.

1) GENERAL INFORMATION

Introduction

Student assessment provides evidence for making judgement about student achievement. This booklet will inform you clearly of assessment tasks that must be completed to show that you have satisfied the requirements of the course.

The student must also **complete all course work to a satisfactory standard** in order to meet the requirements of the Preliminary course.

Your Year Advisers and the Careers Adviser are available to assist you if you have any concerns or problems regarding the Preliminary Course or whether your pattern of study best suits the career path you wish to take.

It is most important to keep your Year Advisers up to date with changes to your study. They will provide you with support if you are experiencing any problems that may affect your studies. If you are going to be absent for any period of time, seek approval from the Principal first. Extended leave for Year 11 students is unlikely to be approved by the Principal.

Mia Kumar
Principal

Chris Maiorana
Year Adviser

SPECIAL PROVISIONS

If your daughter has a diagnosed medical condition such as a mental health issue or diagnosed learning difficulty she may be eligible for Special Provisions. Special Provisions must be applied for and approved by the Board of Studies for the School Certificate and Higher School Certificate examinations. They may also apply for school based assessment tasks. Special Provisions may include extra time to write, extra time to rest and separate supervision. Should your daughter be eligible please contact the school counsellor, Marja Boddeus on 97473355

BOARD OF STUDIES REQUIREMENTS FOR THE AWARD OF A 2009 Preliminary Certificate

Students should refer to:

- Requirements of the Education Act 1990 (Attachment 1) (see page 4) and Pattern of Study Requirements Checklist for the 2009 Higher School Certificate (Attachment 2) (see page 5).

**THE REQUIREMENTS OF THE *EDUCATION ACT 1990*
IN RELATION TO THE NEW SOUTH WALES HIGHER SCHOOL CERTIFICATE**

Higher School Certificate – section 95

Higher School Certificates are to be granted by the Board of Studies to students who:

- (a) have been granted a School Certificate, or who have attained such other qualifications as the Board considers satisfactory; and
- (b) have attended a government school, or registered non-government school to which a current certificate of accreditation applies, or school outside New South Wales recognised by the Board, or a TAFE establishment within the meaning of the *Technical and Further Education Commission Act 1990*; and
- (c) have participated, to the Board's satisfaction, in courses of study which have been determined under this Act as appropriate to be undertaken by candidates for the Higher School Certificate; and
- (d) have been accepted by the Board as having satisfactorily completed those courses of study; and
- (e) have, to the Board's satisfaction, undertaken the requisite examinations or other forms of assessment; and
- (f) have complied with any requirements prescribed by the regulations or any requirements imposed by the Minister or the Board.

The Board may refuse to grant a Higher School Certificate to a student whose attendance or application at school has been of such an unsatisfactory character that the grant of the certificate would not, in the opinion of the Board, be justified.

Curriculum for Higher School Certificate candidates – section 12

The curriculum during Year 11 and Year 12 for students who are candidates for the Higher School Certificate must meet the following requirements:

- (a) courses of study of a general description determined by the Minister on the recommendation of the Board are to be provided for each student in each Year,
- (b) those courses of study are to include a course of study in English,
- (c) those courses of study are to comply with a pattern of study determined by the Minister on the recommendation of the Board,
- (d) those courses of study are to be taught in accordance with a syllabus developed or endorsed by the Board and approved by the Minister.

These requirements are articulated in Attachment 2.

**PATTERN OF STUDY REQUIREMENTS CHECKLIST
FOR THE 2009 HIGHER SCHOOL CERTIFICATE**

✓	<i>Do your students who complete the Higher School Certificate in 2010 meet the following pattern of study requirements?</i>
	At least 12 units of Preliminary courses and 10 units of HSC courses
	At least 2 units of a Board Developed Course in English – at both Preliminary and HSC level
	At least 4 subjects – at both Preliminary and HSC level
	At least 6 units of Board Developed Courses – at both Preliminary and HSC level
	At least 3 courses of 2 unit value or greater (Board Developed and/or Board Endorsed Courses) – at both Preliminary and HSC level
	A maximum of 6 Preliminary units and 6 HSC units from courses in Science [Ref: <i>ACE Manual</i> , Dec. 2005, Section 8.3.1.4, p.88]
	In the Preliminary study pattern, Senior Science cannot be studied in combination with Biology, Chemistry, Earth and Environmental Science or Physics. In the HSC study pattern, Senior Science can be studied in combination with Biology, Chemistry, Earth and Environmental Science or Physics. Students undertaking Senior Science in the HSC study pattern must have satisfactorily completed the Preliminary course in at least one Science course [Ref: <i>ACE Manual</i> , Dec. 2005, Section 8.3.1.4, p.88]
	Met eligibility requirements for the English (ESL) course [Ref: <i>ACE Manual</i> , Dec. 2005, Section 8.2.2.1, p.84]
	Met eligibility requirements for Continuers courses in languages where there are Background Speakers courses [Ref: <i>ACE Manual</i> , Dec. 2005, Section 8.2.2.2, p.84-86]
	Met eligibility requirements for Beginners courses in languages [Ref: <i>ACE Manual</i> , Dec. 2005, Section 8.2.2.3, p.86]
	Board Endorsed Courses have current endorsement
	Students are not enrolled in any Board Developed Course, Board Endorsed Course, TAFE delivered VET HSC Course or Board Endorsed Course combinations which are subject to Board exclusions. [For exclusions please see <i>ACE Manual</i> , Dec. 2005, Section 8.3, p.87-90, PLUS also check your school BEC decision letters or check for BEC decisions via <i>Schools Online</i> .]
REMINDERS	
	Students seeking a UAI (Universities Admission Index) in 2010 must complete at least 10 units of Board Developed Courses for which there are formal examinations conducted by the Board of Studies, including (a) at least 2 units of English, and (b) at least 8 units of Category A courses. Courses completed must include at least three Board Developed Courses of 2 units or greater and at least four subjects. NB: Board Endorsed Courses and Content Endorsed Courses, including vocational Content Endorsed Courses, do not satisfy requirements for a UAI.
	Schools should note that additional Departmental curriculum requirements (e.g. sport, religious education, 25 hours of PD/H/PE etc) or conditions of enrolment at individual schools are not requirements for Higher School Certificate credentialing as determined by the Board of Studies as the statutory Higher School Certificate credentialing authority.
	Schools will need to ensure that Board requirements are met in cases of accumulation, acceleration, repeating, recognition of prior learning and in any cases of non-completion of course requirements. [Please refer to <i>ACE Manual</i> , Dec. 2005, Section 8 for details.]
	Students with special education needs can meet the requirements for the award of the Higher School Certificate by undertaking a combination of Board Developed Courses, Board Endorsed Courses and/or Stage 6 Life Skills Courses. Principals will be required to certify on the Preliminary and HSC entry forms that enrolment of a student in any Life Skills Courses for Stage 6 is the result of a planning process that addresses the student's transition from school to adult life. [Please refer to the <i>ACE Manual</i> , Dec. 2005, Section 7, p.73-77.]

BURWOOD GIRLS HIGH SCHOOL PRELIMINARY ASSESSMENT POLICY AND PROCEDURES

1. General Information

Preliminary assessment in Year 11 gives credit for consistent performance. Burwood Girls High School has developed a program that covers Board requirements, with complete fairness to students, and balance between courses. Students are required to be diligent and complete all tasks presented to them.

This assessment process will begin Term 1 of 2009 and will finish with the yearly exams at the end of Term 3 2009.

Not every piece of work completed will be part of the “assessment” mark, some work is set to practise skills so that the students can see how well they understand the topic. **All set work should be regarded as an essential course requirement**, even when it is not included as an assessment task. Students will automatically fail a course if they do not make a satisfactory attempt to complete assessable tasks with a weighting of over 50%.

Attendance at all timetabled lessons is an important step to fulfilling course requirements. The Principal may decide that a student’s attendance has made it impossible for course outcomes to be achieved. The Board of Studies suggests that absences greater than 15% make it difficult to satisfactorily complete a course.

Students may also be deemed not to have satisfactorily completed a course if there is sufficient evidence of:

- a) failure to complete experiences specified in the syllabus, eg fieldwork, oral presentations, assignments, practical work, participation in class;
- b) non-serious or trivial preparation for exams.

2. Notification of Assessment Results

Students are provided with information on their performance in each task (mark and / or rank).

3. Student Responsibilities

- **YOU ARE RESPONSIBLE FOR YOUR OWN ASSESSMENT** in a number of ways. If you act irresponsibly you may end up with a **ZERO MARK (0)**.
- **YOU MUST BE FAMILIAR** with the assessment policies set out in this book for each subject you take.
- It is **YOUR RESPONSIBILITY** to:
 - (a) **ATTEND SCHOOL**, be **AWARE OF DUE DATES** for assessment tasks and complete tasks **ON TIME**. If you are absent for any number of days you must check with your teachers to see if any assessment tasks have been set on the **FIRST DAY** of your return to school.
 - (b) **BE ON TIME** to assessment tasks: you will **NOT** be given an extension of time. If you are late to any task held in school time or at the beginning of the day, then the Deputy Principals or the Principal must verify that you have a **LEGITIMATE** reason for being later and give you a note to that effect.

(c) BE PRESENT to do all in-school assessment tasks. This means being **PRESENT THE DAY BEFORE AND ALL DAY** that a task is due or that a task is set as an exam. **IT IS NOT PERMITTED TO TAKE DAYS OFF FROM SCHOOL IN ORDER TO COMPLETE AN ASSESSMENT TASK OR STUDY FOR A TEST.** If you miss lessons prior to Assessment Tasks you will be asked to explain your absence in writing and to accompany this with a medical certificate or other appropriate documentation (see “What happens if you miss a task?” on page 10). If you are absent you risk receiving a ZERO MARK for the task.

(d) HAND IN any homework assessment task on time.

YOU MUST NOT under any circumstances leave a piece of work on a teacher’s desk as no record will have been established of its presentation. Therefore any work not personally handed to the class teacher or a person nominated by the class teacher will be dealt with in the same manner as for failure to complete a task and a ZERO MARK will be awarded accordingly. Friends are NOT to hand in your task.

If absent on the day a task is due, it is the student’s responsibility to contact the teacher or Head Teacher of the faculty (9747 3355) ON THE FIRST DAY OF ABSENCE.

(e) BRING A MEDICAL CERTIFICATE or other documentation justifying your absence to your teacher (and a copy to the front office) on your FIRST DAY back at school if you are absent for an assessment test or are absent on the day a task is due. Back-dated medical certificates are not acceptable. Students who habitually present doctors’ certificates for assessment tasks will be deemed to be non-serious students unless the school is aware of a prior medical condition. On return to school submit “Illness, Accident or Misadventure Application” form (see Appendix) to the subject teacher with medical certificate, which will be referred to the Assessment Committee.

(f) NOTIFY your teacher of any assessment problems **in advance**, if possible. If you are ill on the day of an assessment task or have suffered a misadventure immediately prior to the day of an assessment task, you must inform the teacher on the day of the task **before** the task begins. Illness/misadventure forms must be submitted to the teacher, supported by a doctor’s certificate, within 48 hours.

(g) CHECK THE MARKING of each task when it is returned to you.

(h) CHECK YOUR ASSESSMENT RANK when it is given to you from time to time.

(i) REFER to the Board of Studies website for current course information, including course outcomes - [.www.boardofstudies.nsw.edu.au/syllabus_preliminary](http://www.boardofstudies.nsw.edu.au/syllabus_preliminary).

Some prolonged absences, eg a holiday overseas, cannot be taken into account and could lead to you not meeting outcomes in that subject. You must seek approval from the Principal before you take your leave.

4. Assessment Task Procedures

- You will be given at least **2 weeks notice in writing** of any assessment task. All the class will be asked to sign a “record of issue/collection of task” form stating the date and time of day the task is due. It is up to you to abide by the guidelines set out in this assessment booklet.

- Assessment tasks must be submitted on the due date. A zero mark will be awarded for work submitted late, unless a **doctor's certificate** or exceptional circumstances deemed acceptable by the Head Teacher are supplied (in writing).
- It is your responsibility to see your teacher as soon as practicable on the morning of your return to school to hand in the task or to arrange to complete a missed in-class task. The teacher and Head Teacher of the course will decide what sort of task will need to be submitted, eg an alternative task or the original task.
- The deputy principal in exceptional circumstances may authorise an **estimate** to be given for a missed task.
- You will be awarded a **zero mark** for an assessment task/examination if you have **cheated**, submitted a **non-serious attempt**, plagiarised or committed any other form of malpractice.
- If you are completing **compulsory work placement** you will not be disadvantaged. If there is sufficient time prior to commencing work placement the task can be submitted early or handed in by another person on the due date. It is your responsibility to notify your teacher and Head Teacher once you are aware that you will be on work placement when the task is due. A new date may be set by the Head Teacher which should be recorded on the "record of issue/collection" form.
- If you are involved in **knockout sport** you must notify your teacher and Head Teacher as soon as you are aware of the clash of dates. Permission to attend the knockout game will be at the discretion of the Head Teacher and Head Teacher PDHPE. You may be given the option of completing the task prior to competing in the knockout game or, if it is a research task, you need to arrange for it to be handed in to your teacher on the required day.
- If you choose to prepare and produce work with the use of **computer technology** it is your responsibility to ensure a hard copy is made well in advance of the due date. Computer and associated technology malfunction, even theft, without evidence of "work in progress" is **not a reason for late submission**.
- If you believe a task has been incorrectly marked you should discuss the matter with the class teacher concerned as soon as you receive the task back. Dissent about a mark which a teacher has determined is **NOT** grounds for appeal.
- If you believe you have been unfairly treated in being awarded a **zero** mark for an assessment task you may seek clarification from the Head Teacher of the course or go through the appeals process on page 10.

5. Unsatisfactory Completion of Course

- If you fail to satisfy minimum course requirements you will be awarded an 'N' determination. You must complete at least 12 preliminary units before being able to progress to the HSC.
- **What should 'N' Award letters be written for?**
 - (a) **Failure to submit assessable tasks.** Assessable tasks are those in the assessment booklet.
 - (b) **Lack of diligence.** This is when a student has failed to complete a significant amount of non-assessable work such as class work, homework, practical work and other learning tasks the teacher has assigned – a genuine attempt must be made of all tasks.

- (c) **Not completing the prescribed course.** This is most obvious when the student has poor attendance and misses a large amount of lessons. When student's absences exceed 15% they may be considered as not adequately completing the course.

6. What Happens If You Miss A Task?

IT IS VERY IMPORTANT that you be in attendance when assessment tasks are scheduled. Failure to complete a task without adequate reason will result in a ZERO MARK being awarded for the task.

UNAVOIDABLE ABSENCES caused by illness or misadventure must be explained IN WRITING and accompanied by a MEDICAL CERTIFICATE or other APPROPRIATE DOCUMENTATION. This documentation must be submitted on the FIRST DAY of return to school to the Head Teacher or teacher in charge of the task. (Copies of documentation of absence to be also handed to the front office.) You must also contact the teacher or Head Teacher of the faculty on the first day of the absence (9747 3355).

- a) **Medical certificates/other documentation MUST be issued by a qualified medical practitioner, preferably your family doctor or specialist.**
- b) The certificate/document should clearly state the nature of the condition/circumstance and how this might be expected to affect your performance.
- c) The certificate/document should also cover the ENTIRE PERIOD OF YOUR ABSENCE. For example, if you are absent on the day of the task, the day before and the day after as well, your certificate/document must cover all three days.
- d) The school reserves the right to check all certificates/documentation submitted and will on occasion make contact with the doctor/s concerned.

7. Cheating or Malpractice

All assessment tasks must be:

- a) **YOUR OWN ORIGINAL WORK.** You cannot submit a task which is the same as another student's task. You may work on a task with a friend, relative, etc but the final copy must be in your own words, ie it must be YOUR OWN INTERPRETATION of the task. Failure to comply with this will lead to the award of a ZERO MARK.
- b) Completed in the current assessment period. You may not hand in a task or part of a task completed for another assignment in this or previous years. Students found to have committed this form of malpractice will be awarded a ZERO MARK.

In situations where it is established that the student has copied from another student or misrepresented work copied from a source or committed any other type of malpractice then a ZERO MARK will be given for the task.

The Head Teacher in consultation with the class teacher will establish that malpractice has occurred. Parents/guardians will be advised in writing.

8. Reviews and Appeals

Any complaints about assessment procedure should be made in the first place to the classroom teacher. Further appeals may be made to the Head Teacher of the appropriate faculty and then to the school's review panel.

The request for review must be made within three days of the issue of assessment ranks.

The way marks were awarded by the teacher for assessment tasks will not be subject to review.

The school review panel will consist of the Principal or Deputy Principal, the Head Teacher concerned, and one other Head Teacher.

The Year Adviser may act as student advocate in these cases. A student who is dissatisfied with the school's review procedures may appeal to the Board.

9. Information and Advice

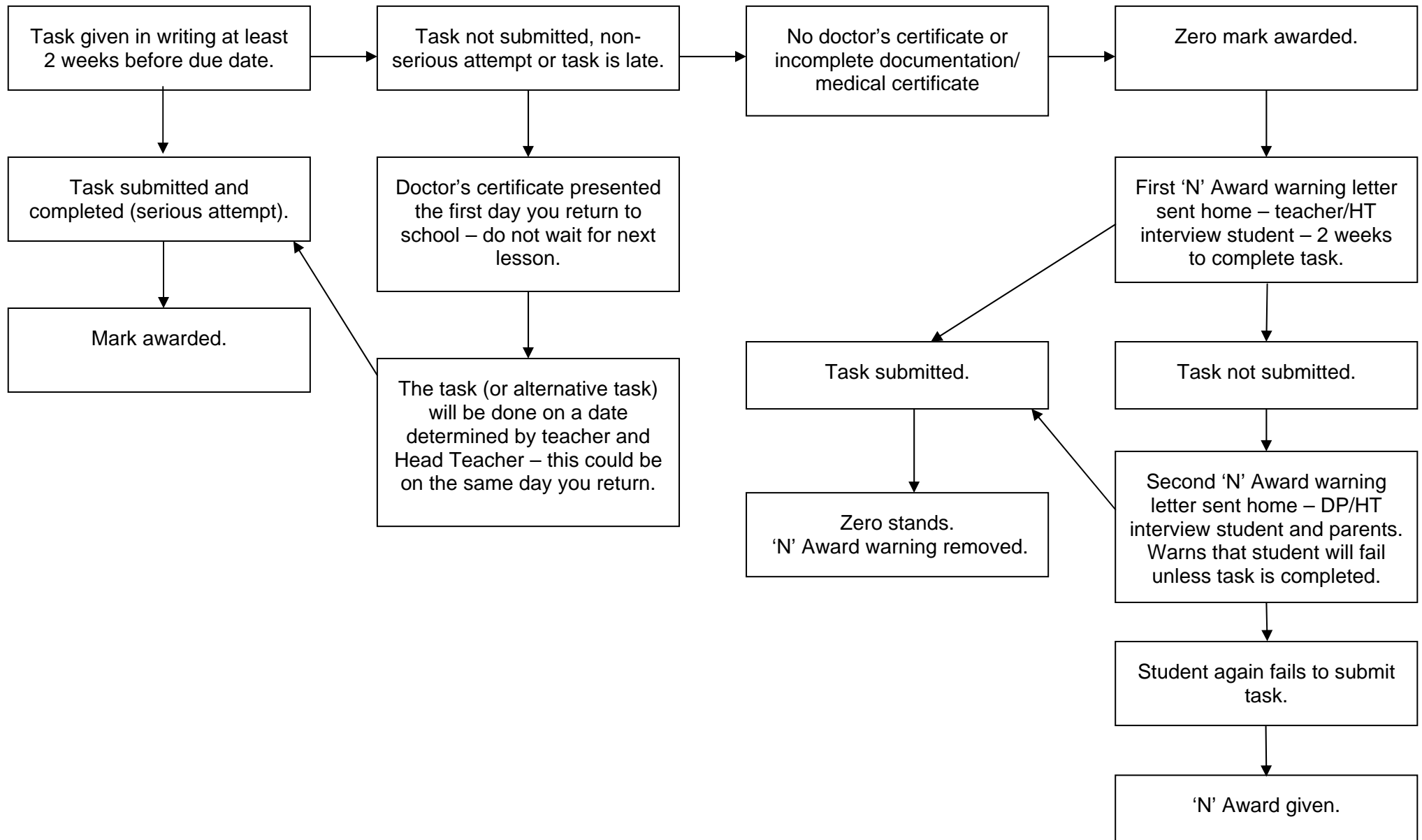
Advice on assessment is available from:

- The Assessment Co-ordinator
- The Head Teacher of the Faculty concerned
- The Careers Adviser
- The Student Adviser

Information is located:

- Board documents – with the Principal or Assessment Co-ordinator
- Board of Studies website – www.boardofstudies.nsw.edu.au
- School Assessment Policy
- Preliminary Assessment Policy and Procedures – spare copies with the Student Adviser, and Deputy Principal
- Faculty Assessment Program – with the Faculty concerned; copy with the Principal

ASSESSMENT TASK FLOW CHART



GLOSSARY OF KEY WORDS

Syllabus outcomes, objectives, performance bands and examination questions have key words that state what students are expected to be able to do. A glossary of key words has been developed to help provide a common language and consistent meaning in the Higher School Certificate documents.

Using the glossary will help teachers and students understand what is expected in responses to examinations and assessment tasks.

Account	Account for: state reasons for, report on. Give an account of: narrate a series of events or transactions
Analyse	Identify components and the relationship between them; draw out and relate implications
Apply	Use, utilise, employ in a particular situation
Appreciate	Make a judgement about the value of
Assess	Make a judgement of value, quality, outcomes, results or size
Calculate	Ascertain/determine from given facts, figures or information
Clarify	Make clear or plain
Classify	Arrange or include in classes/categories
Compare	Show how things are similar or different
Construct	Make; build; put together items or arguments
Contrast	Show how things are different or opposite
Critically (analyse/evaluate)	Add a degree or level of accuracy depth, knowledge and understanding, logic, questioning, reflection and quality to (analyse/evaluate)
Deduce	Draw conclusions
Define	State meaning and identify essential qualities
Demonstrate	Show by example
Describe	Provide characteristics and features
Discuss	Identify issues and provide points for and/or against
Distinguish	Recognise or note/indicate as being distinct or different from; to note differences between
Evaluate	Make a judgement based on criteria; determine the value of
Examine	Inquire into
Explain	Relate cause and effect; make the relationships between things evident; provide why and/or how
Extract	Choose relevant and/or appropriate details
Extrapolate	Infer from what is known
Identify	Recognise and name
Interpret	Draw meaning from
Investigate	Plan, inquire into and draw conclusions about
Justify	Support an argument or conclusion
Outline	Sketch in general terms; indicate the main features of
Predict	Suggest what may happen based on available information
Propose	Put forward (for example a point of view, idea, argument, suggestion) for consideration or action
Recall	Present remembered ideas, facts or experiences
Recommend	Provide reasons in favour
Recount	Retell a series of events
Summarise	Express, concisely, the relevant details
Synthesise	Putting together various elements to make a whole



BURWOOD GIRLS HIGH SCHOOL

Example

ILLNESS, ACCIDENT OR MISADVENTURE APPLICATION

To be completed by student, and handed to Teacher for Head Teacher.

STUDENT'S NAME: _____

SUBJECT: _____

TEACHER'S NAME: _____ CLASS: _____

NATURE OF ASSESSMENT: _____

(State whether Examination, Topic or Unit Test, Assignment, Research Activity, Practical Exercise, Practical Test, Field Work, Other.)

DATE TASK DUE: _____

DATE THAT THE TASK WILL BE COMPLETED: _____

NATURE OF ABSENCE: _____

(State sufficient details to support your case for consideration to sit for task or substitute task or to gain an extension.)

MEDICAL CERTIFICATE FROM: _____ (Name of doctor)

OR NATURE OF OTHER VERIFICATION (eg. funeral notice from newspaper etc.)

STUDENT'S SIGNATURE: _____ DATE: _____

TEACHER'S COMMENT:

ASSESSMENT COMMITTEE'S RECOMMENDATION:

PRINCIPAL'S SIGNATURE: _____ DATE: _____

Sample letter: Official Warning of 'N' Determination (Preliminary Course)

Burwood Girls High School

Centre of Excellence



Queen Street
Croydon NSW 2132

P +61 2 9747 3355
F +61 2 9744 2797

burwoodg-h.school@det.nsw.edu.au
www.burwoodg-h.schools.nsw.edu.au

Dear

Re: OFFICIAL WARNING - Non-completion of a Preliminary Course.

I am writing to advise that your daughter is in danger of not meeting the Course Completion Criteria for the Preliminary course

The Board of Studies requires schools to issue students with official warnings in order to give them the opportunity to redeem themselves.

Please regard this letter as the **official warning** we have issued concerning

A minimum of two course-specific warnings must be issued prior to a final 'N' determination being made for a course.

Course Completion Criteria

Where it is determined that a student has not met the Course Completion Criteria, they place themselves at risk of receiving an 'N' (non-completion of course) determination. An 'N' determination will mean that the course will not be listed on the student's Record of Achievement.

It may also mean that the student is unable to proceed to the HSC course as she has not satisfactorily completed the Preliminary Course.

To date, has not satisfactorily met of the Course Completion Criteria*.

The following table lists those tasks, requirements or outcomes not yet completed or achieved, and/or for which a genuine attempt has not been made. In order for to satisfy the Course Completion Criteria, the following tasks, requirements or outcomes need to be satisfactorily completed/achieved.

Task Name/ Course Requirement/ Course Outcome	Date Task Initially Due (if applicable)	Action Required by Student	Date to be Completed By (if applicable)

***Course Completion Criteria**

The satisfactory completion of a course requires principals to have sufficient evidence that the student has:

- a) **followed** the course developed or endorsed by the Board; and
- b) **applied** themselves with diligence and sustained effort to the set tasks and experiences provided in the course by the school; and
- c) **achieved** some or all of the course outcomes.

.../2

Comments:

Please discuss this matter with and contact the school if further information or clarification is needed.

Yours sincerely,

.....
Class Teacher / Head Teacher

.....
Principal

Date

Please detach this section and return to school

Requirements for the satisfactory completion of a Preliminary Course

- I have received the letter dated indicating that is in danger of not having satisfactorily completed
- I am aware that this course may not appear on her Record of Achievement.
- I am also aware that the 'N' determination may make her ineligible to proceed to the Higher School Certificate.
- I am also aware that the 'N' determination may make her ineligible for the award of the Higher School Certificate.

Parent/Guardian's signature:

Date:

Student's signature:

Date:

2) SUBJECT INFORMATION

ANCIENT HISTORY PRELIMINARY COURSE 2009

ASSESSMENT COMPONENTS AND WEIGHTINGS

ANCIENT HISTORY		
COMPONENTS		WEIGHTING %
<u>No.</u>		
1.	Uncovering the Past: The Ice Man	25
2.	Ancient Society: Deir el Medina	25
3.	Ancient Society: The Colosseum	25
4.	Historical Investigation	25
	Total	100

These components will be assessed in the following manner:

ASSESSMENT TASKS

Task No.	Due	Assessment Task Description	Components	Marks/ Value	Total %
1.	T1 W6	Uncovering the Past: The Ice Man	1	25	25
2.	T1 W10	Investigation. Pt 1: Proposal	4	5	5
3.	T2 W7	Source Analysis: Deir el Medina	2	10	10
4.	T3 W1	Investigation. Pt 2: Presentation	4	20	20
5.	T3 W8,9	Yearly Exam	2,3	40	40

BIOLOGY
PRELIMINARY COURSE 2009

ASSESSMENT COMPONENTS AND WEIGHTINGS

BIOLOGY		
COMPONENTS		WEIGHTING %
<u>No.</u> 1.	Knowledge and understanding of: <ul style="list-style-type: none"> • the history, nature, and practice of biology, applications and uses of biology and their implications for society and the environment, and current issues, research and developments in biology • cell ultrastructure and processes, biological diversity, environmental interactions, mechanisms of inheritance and biological evolution 	40
2.	Skills in planning and conducting first-hand investigations and in communicating information and understanding based on these investigations	30
3.	Skills in scientific thinking, problem solving, and in communicating understanding and conclusions	30
	Total	100

These components will be assessed in the following manner:

ASSESSMENT TASKS

Task No.	Due	Assessment Task Description	Components	Marks/Value	Total %
1.	T1 W8	Practical and Theory Test	1,2	10,10	20
2.	T2 W6	Practical and Theory Test	2,3	10,10	20
3.	T3 W4	Research	1,3	10,10	20
4.	T3 W8,9	Yearly Exam	1,2,3	20,10,10	40

BUSINESS STUDIES
PRELIMINARY COURSE 2009

ASSESSMENT COMPONENTS AND WEIGHTINGS

BUSINESS STUDIES		
COMPONENTS		WEIGHTING %
<u>No.</u>		
1.	Test Type	40
2.	Oral	10
3.	Business Research Task	30
4.	Stimulus-based Skills	20
	Total	100

These components will be assessed in the following manner:

ASSESSMENT TASKS

Task No.	Due	Assessment Task Description	Components	Marks/Value	Total %
1.	T1 W10	Burwood Business Report	4	10	10
2.		Business Research Task (which will be submitted in 3 stages)			
	T2 W4	a) Stage 1	3	5	} 30
	T2 W8	b) Stage 2	3	10	
	T3 W2	c) Stage 3	3	15	
3.	T3 W4	Oral Task	2	10	10
4.	T3 W6	Business Plan	4	10	10
5.	T3 W8,9	Exam	1	40	40

CHEMISTRY
PRELIMINARY COURSE 2009

ASSESSMENT COMPONENTS AND WEIGHTINGS

CHEMISTRY		
COMPONENTS		WEIGHTING %
<u>No.</u> 1.	Knowledge and understanding of: <ul style="list-style-type: none"> • the history, nature, and practice of chemistry, applications and uses of chemistry and their implications for society and the environment, and current issues, research and developments in chemistry • atomic structure and periodic table, energy, chemical reactions, carbon chemistry and stoichiometry 	40
2.	Skills in planning and conducting first-hand investigations and in communicating information and understanding based on these investigations	30
3.	Skills in scientific thinking, problem solving, and in communicating understanding and conclusions	30
	Total	100

These components will be assessed in the following manner:

ASSESSMENT TASKS

Task No.	Due	Assessment Task Description	Components	Marks/Value	Total %
1.	T1 W9	Written Theory Task	1,2	10,10	20
2.	T2 W6	Research	1,3	10,10	20
3.	T3 W4	Practical	2,3	10,10	20
4.	T3 W8,9	Yearly Exam	1,2,3	20,10,10	40

CHINESE BACKGROUND SPEAKERS PRELIMINARY COURSE 2009

ASSESSMENT COMPONENTS AND WEIGHTINGS

CHINESE BACKGROUND SPEAKERS		
COMPONENTS		WEIGHTING %
<u>No.</u>		
1.	Spoken exchanges in Chinese	10
2.	Written exchanges in Chinese	10
3.	Listening and Responding	20
4.	Reading and Responding	40
5.	Writing in Chinese	20
	Total	100

These components will be assessed in the following manner:

ASSESSMENT TASKS

Task No.	Due	Assessment Task Description	Components	Marks/ Value	Total %
1.	T1 W6	Listening and Responding/Writing	2,4	5,10	15
2.	T2 W9	Reading and Responding/Listening and Responding	1,3	20,5	25
3.	T3 W6	Spoken and Written Exchanges	1,2	10,10	20
4.	T3 W8,9	Listening and Responding/Reading and Responding/Writing	2,3,4	10,20,10	40

*NB: The above weeks and task components are subject to change. Two weeks notice will be given before every assessment task, clearly outlining all components and content covered.

CHINESE CONTINUERS PRELIMINARY COURSE 2009

ASSESSMENT COMPONENTS AND WEIGHTINGS

CHINESE CONTINUERS		
COMPONENTS		WEIGHTING %
<u>No.</u>		
1.	Speaking	20
2.	Listening and Responding	30
3.	Reading and Responding A/B	25/15
4.	Writing in Chinese	10
	Total	100

These components will be assessed in the following manner:

ASSESSMENT TASKS

Task No.	Due	Assessment Task Description	Components	Marks	Total %
1.	T2 W3	Speaking	1	20	
2.	T2 W7	Reading and Responding A	3	25	
3.	T2 W11	Listening and Responding	2	25	
4.	T3 W4	Writing	4	15	
5.	T3 W7	Reading and Responding B	3	15	60%
6.	T3 W8,9	Yearly Exam - Speaking - Listening and Responding - Reading and Responding A/B - Writing	1,2,3,4	20 25 25,15 15	40%

COMMUNITY AND FAMILY STUDIES
PRELIMINARY COURSE 2009

ASSESSMENT COMPONENTS AND WEIGHTINGS

COMMUNITY AND FAMILY STUDIES		
COMPONENTS		WEIGHTING %
<u>No.</u>		
1.	Resource Management	20
2.	Individuals and Groups	40
3.	Families and Communities	40
	Total	100

These components will be assessed in the following manner:

ASSESSMENT TASKS

Task No.	Due	Assessment Task Description	Components	Marks/Value	Total %
1.	T1 W7	Test	1	10	10
2.	T2 W6	Research/Case Study	2	30	30
3.	T3 W6	Research/Oral Presentation	3	30	30
4.	T3 W8,9	Yearly Exam	1,2,3	30	30

DANCE
PRELIMINARY COURSE 2007

ASSESSMENT COMPONENTS AND WEIGHTINGS

DANCE		
COMPONENTS		WEIGHTING %
<u>No.</u>		
1.	Performance	50
2.	Composition	25
3.	Appreciation	25
	Total	100

These components will be assessed in the following manner:

ASSESSMENT TASKS

Task No.	Due	Assessment Task Description	Components	Marks/Value	Total %
1.	T1 W6&11	Performance Assessment and Self-Appraisal	1	20	20
2.	T2 W11	Personal Practice Program	1	30	30
3.	T2 W10	Appreciation Analysis	3	25	25
4.	T3 W10	Composition Task	2	25	25

DRAMA
PRELIMINARY COURSE 2009

ASSESSMENT COMPONENTS AND WEIGHTINGS

DRAMA		
COMPONENTS		WEIGHTING %
<u>No.</u>		
1.	Improvisation, Playbuilding and Acting	40
2.	Theatrical Traditions and Performance Styles	30
3.	Elements of Production in Performance	30
	Total	100

These components will be assessed in the following manner:

ASSESSMENT TASKS

Task No.	Due	Assessment Task Description	Components	Marks/Value	Total %
1.	T1 W7	Monologue Proposal	2	20	10
2.	T2 W2	Monologue Performance	1,2	30	20
3.	T2 W10	Group Performance	2	30	30
4.	T3 W7	Design Project and Rationale	3	30	20
5.	T3 W8,9	Preliminary Examination	2,3	40	20

ECONOMICS
PRELIMINARY COURSE 2009

ASSESSMENT COMPONENTS AND WEIGHTINGS

ECONOMICS		
COMPONENTS		WEIGHTING %
<u>No.</u>		
1.	Tests/Exams	50
2.	Stimulus/Skills	25
3.	Research/Investigation/Communication	25
	Total	100

These components will be assessed in the following manner:

ASSESSMENT TASKS

Task No.	Due	Assessment Task Description	Components	Marks/Value	Total %
1.	T1 W7	Topic Test	1	20	20
2.	T2 W6	Stimulus Test Calculations	2	20	20
3.	T3 W2	Research Task	3	20	20
4.	T3 W6	Essay	3	20	20
5.	T3 W8,9	Yearly Exam	1	20	20

**ENGLISH ADVANCED
PRELIMINARY COURSE 2009**

ASSESSMENT COMPONENTS AND WEIGHTINGS

ENGLISH ADVANCED		
COMPONENTS		WEIGHTING %
<u>No.</u>		
1.	Common Content: Area of Study: Conflict	40
2.	Module A: Texts from other places, other times	30
3.	Module B: Texts of our place, our time	30
	Total	100

These components will be assessed in the following manner:

ASSESSMENT TASKS

Task No.	Due	Assessment Task Description	Components	Marks/Value	Total %
1.	T1	Extended Response: Critical	2	20	15
2.	T2	Extended Response: Creative	1	15	20
3.	T3	Speaking Task	3	20	15
4.	T3 W8,9	Preliminary Examination	1,2,3	15,20,20	20,15,15

**ENGLISH AS A SECOND LANGUAGE (ESL)
PRELIMINARY COURSE 2009**

ASSESSMENT COMPONENTS AND WEIGHTINGS

ENGLISH AS A SECOND LANGUAGE		
COMPONENTS		WEIGHTING %
<u>No.</u>		
1.	Language in Area of Study: Conflict	35
2.	Module A: Language for Life	40
3.	Language in Area of Study: Visual Literacy	25
	Total	100

These components will be assessed in the following manner:

ASSESSMENT TASKS

Task No.	Due	Assessment Task Description	Components	Marks/ Value	Total %
1.	T1 W11	Speaking, Representing and Writing	2	20	20
2.	T2 W5	Reading Task	1	15	15
3.	T2 W10	Listening Task	1	10	10
4.	T3 W6	Viewing/Representing and Speaking	3	25	25
5.	T3 W8,9	Preliminary Examination	1,2	30	30

**ENGLISH EXTENSION 1
PRELIMINARY COURSE 2009**

ASSESSMENT COMPONENTS AND WEIGHTINGS

ENGLISH EXTENSION 1		
COMPONENTS		WEIGHTING %
<u>No.</u>	Module: Texts, Culture and Value	
1.	Speaking	5
2.	Listening	5
3.	Reading/Writing	30
4.	Viewing/Representing	10
	Total	50

These components will be assessed in the following manner:

ASSESSMENT TASKS

Task No.	Due	Assessment Task Description	Components	Marks/Value	Total %
1.	T1	Utopia Presentations	1,2	15,10	10
2.	T2	Extended response: critical	3	20	10
3.	T3 W5	Mini-Major Work	3	30	10
4.	T3 W8,9	Preliminary Examination	3,4	50	20

ENGLISH FUNDAMENTALS PRELIMINARY COURSE 2009

English Fundamentals is a 1 Unit support course.

ASSESSMENT COMPONENTS AND WEIGHTINGS

ENGLISH FUNDAMENTALS – 1 UNIT		
COMPONENTS		WEIGHTING %
<u>No.</u>		
1.	Speaking	10
2.	Listening	10
3.	Reading/Writing	20
4.	Viewing/Representing	10
	Total	50

These components will be assessed in the following manner:

ASSESSMENT TASKS

Task No.	Due	Assessment Task Description	Components	Marks/Value	Total %
1.	T1 W5	Speaking Task	1	20	10
2.	T2 W8	Reading and Reviewing/Representing Task	3,4	10,10	10
3.	T3 W5	Listening Task	2	20	10
4.	T3 W8,9	Preliminary Examination	3,4	20,20	20

FOOD TECHNOLOGY
PRELIMINARY COURSE 2009

ASSESSMENT COMPONENTS AND WEIGHTINGS

FOOD TECHNOLOGY		
COMPONENTS		WEIGHTING %
<u>No.</u>		
1.	Knowledge and Understanding	20
2.	Research, Analysis and Communication	30
3.	Experimentation and Preparation	30
4.	Design, Implementation and Evaluation	20
	Total	100

These components will be assessed in the following manner:

ASSESSMENT TASKS

Task No.	Due	Assessment Task Description	Components	Marks/Value	Total %
1.	T1 W9	Research/Practical	2,3	20,10	25
2.	T2 W8	Research/Practical	1,3,4,2	5,10,10,5	30
3.	T3 W7	Practical/Oral Presentation	4,3,2	10,10,5	25
4.	T3 W8,9	Yearly Exam	1	15	15

FRENCH CONTINUERS PRELIMINARY COURSE 2009

ASSESSMENT COMPONENTS AND WEIGHTINGS

FRENCH CONTINUERS		
COMPONENTS		WEIGHTING %
<u>No.</u>		
1.	Speaking	20
2.	Listening and Responding	25
3.	Reading and Responding	40
4.	Writing in French	15
	Total	100

These components will be assessed in the following manner:

ASSESSMENT TASKS

Task No.	Due	Assessment Task Description	Components	Marks	Total %	
* {	1.	T2 W7	Reading and Responding A	3	25	60%
	2.	T2 W11	Writing	4	15	
	3.	T3 W2	Listening and Responding	2	25	
	4.	T3 W4	Reading and Responding B	3	15	
	5.	T3 W7	Speaking	1	20	
6.	T3 W8,9	Yearly Exam				
		- Speaking	1	20	40%	
		- Listening and Responding	2	25		
		- Reading and Responding A/B	3	25,15		
- Writing in French	4	15				
				Total	100%	

*NB: The above weeks and task components are subject to change. Two weeks notice will be given before every assessment task, clearly outlining all components and content covered.

GENERAL MATHEMATICS
PRELIMINARY COURSE 2009

ASSESSMENT COMPONENTS AND WEIGHTINGS

GENERAL MATHEMATICS – 2 UNIT		
COMPONENTS		WEIGHTING %
<u>No.</u>		
1.	Knowledge and Skills	40
2.	Applications	60
	Total	100

These components will be assessed in the following manner:

ASSESSMENT TASKS

Task No.	Due	Assessment Task Description	Components	Marks/Value	Total %
1.	T1 W9	Written Test	1,2	10,15	25
2.	T2 W8	Written Test	1,2	10,15	25
3.	T3 W8,9	Yearly Exam	1,2	20,30	50

HOSPITALITY OPERATIONS

(VET Course)

PRELIMINARY COURSE 2009

Method of Assessment

Hospitality Operations assessment in Years 11 and 12 is **competency based** with continual and ongoing assessment throughout the year.

This means that a student is assessed on their performance of knowledge or skills, which is required by **industry standards**.

Competency based assessment is largely activity-based and practical. However, competency also implies that an individual displays an understanding of the knowledge, which underpins the practical performance.

A student is deemed competent when they:

- carry out the task to an acceptable industry standard
- organise and manage a range of different tasks
- respond appropriately to a breakdown in routine
- apply existing knowledge and skills to new situations
- use communication and interpersonal skills that suit the work environment.

Students have the opportunity to attempt a task **three** times in order to fulfil the requirements of a competency. Students will be required to purchase their own ingredients for any make-up practical lessons.

Competency based assessment is **ongoing** however there will also be an assessment schedule as follows:

Task No.	Assessment Task Description	Due	Total %
1.	Test - Follow Workplace Hygiene Procedures - Clean Premises & Equipment	T1 W9	20
2.	Questions - Working with Colleagues & Customers	T2 W6	20
3.	Preliminary Practical Exam	T3 W9&10	20
4.	Preliminary Exam	T3 W8,9	40

It is important that students are prepared for their weekly competency assessment and are vigilant in their attendance so that students can meet the requirements.

Units of Competency

- THHCOR01B - Work with Colleagues and Customers
- THHCOR02B - Work in a Socially Diverse Environment
- THHGHS01B - Follow Workplace Hygiene Procedures
- THHCOR03B - Follow Health, Safety and Security
- THHGGA01B - Communicate on the Telephone
- TTHBKA01B - Organise and Prepare Food
- TTHBKA02B - Present Food
- THHGHS02B - Clean Premises and Equipment
- TTHBKA04A - Clean and Maintain Kitchen Premises
- TTHBCC02B - Prepare Appetisers and Salads

INDONESIAN CONTINUERS PRELIMINARY COURSE 2009

ASSESSMENT COMPONENTS AND WEIGHTINGS

INDONESIAN CONTINUERS		
COMPONENTS		WEIGHTING %
<u>No.</u>		
1.	Speaking	20
2.	Listening and Responding	25
3.	Reading and Responding - Part A	25
	- Part B	15
4.	Writing in Indonesian	15
	Total	100

These components will be assessed in the following manner:

ASSESSMENT TASKS

Task No.	Due	Assessment Task Description	Components	Marks	Total %	
* {	1.	T2 W6	Reading and Responding A	3	25	60%
	2.	T2 W9	Speaking	1	20	
	3.	T3 W2	Listening	2	25	
	4.	T3 W4	Writing	4	15	
	5.	T3 W7	Reading and Responding B	3	15	
6.	T3 W8,9	Yearly Exam				
		- Speaking	1	20	40%	
		- Listening and Responding	2	25		
		- Reading and Responding A/B	3	40		
		- Writing	4	15		
Total					100%	

*NB. The above weeks and task components are subject to change.

Two weeks notice will be given before every assessment task, clearly outlining all components and content covered.

ITALIAN BEGINNERS PRELIMINARY COURSE 2009

ASSESSMENT COMPONENTS AND WEIGHTINGS

ITALIAN BEGINNERS		
COMPONENTS		WEIGHTING %
<u>No.</u>		
1.	Listening	30
2.	Speaking	20
3.	Reading	30
4.	Writing in Italian	20
	Total	100

These components will be assessed in the following manner:

ASSESSMENT TASKS

Task No.	Due	Assessment Task Description	Components	Marks	Total %
* {	During Terms 1,2,3 T3 W3&4	Topics covered in class			
		Listening	1	30	
		Speaking	2	20	
		Reading	3	30	
		Writing	4	20	55%
5.	T3 W8,9	Yearly Exam			
		- Listening	1	30	
		- Speaking	2	20	
		- Reading	3	30	
		- Writing in Italian	4	20	45%
				Total	100%

*NB: The above weeks and task components are subject to change. Two weeks notice will be given before every assessment task, clearly outlining all components and content covered.

ITALIAN CONTINUERS PRELIMINARY COURSE 2009

ASSESSMENT COMPONENTS AND WEIGHTINGS

ITALIAN CONTINUERS		
COMPONENTS		WEIGHTING %
<u>No.</u>		
1.	Speaking	20
2.	Listening and Responding	25
3.	Reading and Responding A & B	40
4.	Writing in Italian	15
	Total	100

These components will be assessed in the following manner:

ASSESSMENT TASKS

Task No.	Due	Assessment Task Description	Components	Marks/Value	Total %	
* {	1.	T2 W8	Reading and Responding A	3	25	60%
	2.	T2 W9	Responding B / Listening	3,2	40	
	3.	T3 W2	Writing	4	15	
	4.	T3 W3	Speaking	1	20	
5.	T3 W8,9	Yearly Exam - Speaking - Listening & Responding - Reading & Responding A/B - Writing	1 2 3 4	20 25 25,15 15	40%	
Total					100%	

*NB. The above weeks and task components are subject to change.
Two weeks notice will be given before every assessment task, clearly outlining all components and content covered.

JAPANESE BEGINNERS
PRELIMINARY COURSE 2009

ASSESSMENT COMPONENTS AND WEIGHTINGS

JAPANESE BEGINNERS		
COMPONENTS		WEIGHTING %
<u>No.</u>		
1.	Listening: Interacting and understanding texts	35
2.	Reading: Interacting and understanding texts	35
3.	Speaking: Interacting and producing texts	15
4.	Writing: Interacting and producing texts	15
	Total	100

These components will be assessed in the following manner:

ASSESSMENT TASKS

Task No.	Due	Assessment Task Description	Components	Marks	Total %
1.	T1 W9	Speaking & Listening	3,1	15,35	
2.	T2 W2	Reading & Writing	2,4	35,15	
3.	T2 W9	Speaking & Listening	3,1	15,35	
4.	T2 W10	Reading & Writing	2,4	35,15	60
5.	T3 W8,9	Yearly Exam			
		- Listening	1	35	
		- Reading	2	35	
		- Speaking	3	15	
		- Writing	4	215	40
				Total	100

LEGAL STUDIES
PRELIMINARY COURSE 2009

ASSESSMENT COMPONENTS AND WEIGHTINGS

LEGAL STUDIES		
COMPONENTS		WEIGHTING %
<u>No.</u>		
1.	The Legal System	40
2.	The Individual and the State	20
3.	Law in Focus	40
	Total	100

These components will be assessed in the following manner:

ASSESSMENT TASKS

Task No.	Due	Assessment Task Description	Components	Marks/Value	Total %
1.	T1 W9	Short Answer Test	1	25	20
2.	T2 W8	Research (Focus Study)	3	25	30
3.	T3 W4/6	Oral Component	3	10	10
4.	T3 W8,9	Yearly Exam	2,1	15,20,5	40

MATHEMATICS 2 UNIT
PRELIMINARY COURSE 2009

ASSESSMENT COMPONENTS AND WEIGHTINGS

MATHEMATICS – 2 UNIT		
COMPONENTS		WEIGHTING %
<u>No.</u>		
1.	Knowledge, Understanding and Skills	80
2.	Application	20
	Marks	100

These components will be assessed in the following manner:

ASSESSMENT TASKS

Task No.	Due	Assessment Task Description	Components	Marks/Value	Total %
1.	T1 W9	Written Test	1,2	20,5	25
2.	T2 W8	Written Test	1,2	20,5	25
3.	T3 W8,9	Yearly Exam	1,2	40,10	50

MATHEMATICS EXTENSION 1 – 2 UNIT COMMON
MATHEMATICS EXTENSION 1 – 3 UNIT ADDITIONAL
PRELIMINARY COURSE 2009

ASSESSMENT COMPONENTS AND WEIGHTINGS

MATHEMATICS EXTENSION 1 – 2 UNIT COMMON		
COMPONENTS		WEIGHTING %
<u>No.</u>		
1.	Knowledge, Understanding and Skills	70
2.	Application	30
	Marks	100

MATHEMATICS EXTENSION 1 – 3 UNIT ADDITIONAL		
COMPONENTS		WEIGHTING %
<u>No.</u>		
1.	Knowledge, Understanding and Skills	35
2.	Application	15
	Marks	50

These components will be assessed in the following manner:

ASSESSMENT TASKS

Task No.	Due	Assessment Task Description	Components	Marks/Value	Total %
1.	T1 W10	Written Test	1,2	18,7	25
2.	T2 W9	Written Test	1,2	18,7	25
3.	T3 W8,9	Yearly Exam	1,2	34,16	50

MODERN HISTORY
PRELIMINARY COURSE 2009

ASSESSMENT COMPONENTS AND WEIGHTINGS

MODERN HISTORY		
COMPONENTS		WEIGHTING %
<u>No.</u>		
1.	Yankees and Confederates and the Civil War	25
2.	Decolonisation in Indochina: 1945 - 1954	25
3.	The World at the Beginning of the 20 th Century	25
4.	The Historical Investigation (Parts 1 and 2)	25
	Total	100

These components will be assessed in the following manner:

ASSESSMENT TASKS

Task No.	Due	Assessment Task Description	Components	Marks/Value	Total %
1.	T1 W5	Source Analysis & Research	1	25	25
2.	T1 W10	Investigation Pt 1: Proposal	4	5	5
3.	T2 W6	Decolonisation in Indochina	2	10	10
4.	T3 W1	Investigation Pt 2: Presentation	4	20	20
5.	T3 W8,9	Yearly Exam	2,3	40	40

MUSIC 1
PRELIMINARY COURSE 2009

ASSESSMENT COMPONENTS AND WEIGHTINGS

MUSIC 1		
COMPONENTS		WEIGHTING %
<u>No.</u>		
1.	Composition	25
2.	Aural	25
3.	Musicology	25
4.	Performance	25
	Total	100

These components will be assessed in the following manner:

ASSESSMENT TASKS

Task No.	Due	Assessment Task Description	Components	Marks/Value	Total %
1.	T1 W7	Musicology	2	10	10
2.	T1 W9	Performance	4	10	10
3.	T2 W3	Composition	3	10	10
4.	T2 W8	Aural Written Exam	1	10	10
5.	T3 W2	Musicology	3	15	15
6.	T3 W6	Composition	1	15	15
7.	T3 W8,9	Exam – Aural Written Exam	2	15	15
		Exam – Performance	4	15	15

MUSIC 2
PRELIMINARY COURSE 2009

ASSESSMENT COMPONENTS AND WEIGHTINGS

MUSIC 2		
COMPONENTS		WEIGHTING %
<u>No.</u>		
1.	Composition	25
2.	Aural	25
3.	Musicology	25
4.	Performance	25
	Total	100

These components will be assessed in the following manner:

ASSESSMENT TASKS

Task No.	Due	Assessment Task Description	Components	Marks/Value	Total %
1.	T1 W11	Musicology (written submission)	3	10	10
2.	T2 W3	Composition (1 written piece)	1	10	10
3.	T2 W6	Aural and Musicology Skills	2	10	10
4.	T2 W9	Performance (2 pieces)	4	10	10
5.	T3 W3	Musicology (written submission)	3	15	15
6.	T3 W6	Composition (1 written piece)	1	15	15
7.	T3 W8,9	Exam – Aural & Musicology Skills	2	15	15
		Exam – Performance (2 pieces)	4	15	15

**PERSONAL DEVELOPMENT, HEALTH AND
PHYSICAL EDUCATION
PRELIMINARY COURSE 2009**

ASSESSMENT COMPONENTS AND WEIGHTINGS

PERSONAL DEVELOPMENT, HEALTH AND PHYSICAL EDUCATION		
COMPONENTS		WEIGHTING %
<u>No.</u>		
1.	Core 1: Meaning of Health and Physical Activity	10
2.	Core 2: Better Health for Individuals	35
3.	Core 3: The Body in Motion	25
4.	Option 1: First Aid	15
5.	Option 3: Fitness Choices	15
	Total	100

These components will be assessed in the following manner:

ASSESSMENT TASKS

Task No.	Due	Assessment Task Description	Components	Marks/ Value	Total %
1.	T1 W5	Writing Task	1	10	10
2.	T2 W3	Research & Critical Analysis Report	2	25	25
3.	T2 W10	In Class Task	3	15	15
4.	T3 W6	Case Study (Option 3)	5	15	15
5.	T3 W8,9	Yearly Exam (10% each Core 2 & 3, 15% Option 1)	2,3,4	35	35

**PHOTOGRAPHY, VIDEO & DIGITAL IMAGING – 2 UNIT
PRELIMINARY COURSE 2009**

ASSESSMENT COMPONENTS AND WEIGHTINGS

PHOTOGRAPHY, VIDEO & DIGITAL IMAGING – 2 UNIT CATEGORY B		
COMPONENTS		WEIGHTING %
<u>No.</u>		
1.	Making	70
2.	Critical and Historical Studies	30
	Total	100

These components will be assessed in the following manner:

ASSESSMENT TASKS

Task No.	Due	Assessment Task Description	Components	Marks/ Value	Total %
1.	T1 W6	Written Assignment/Process Diary	2	10	10
2.	T1 W9	Photo Test/Photo Submission	2,1	5,15	20
3.	T2 W9	Photo Submission/Process Diary with Written Research	1,2	25,5	30
4.	T3 W4	Written Documentation/Process Diary	2	10	10
5.	T3 W9	Photo Submission	1	30	30

**PHOTOGRAPHY, VIDEO & DIGITAL IMAGING – 1 UNIT
PRELIMINARY COURSE 2009**

ASSESSMENT COMPONENTS AND WEIGHTINGS

PHOTOGRAPHY, VIDEO & DIGITAL IMAGING – 1 UNIT CATEGORY B		
COMPONENTS		WEIGHTING %
<u>No.</u>		
1.	Making	70
2.	Critical and Historical Studies	30
	Total	100

These components will be assessed in the following manner:

ASSESSMENT TASKS

Task No.	Due	Assessment Task Description	Components	Marks/ Value	Total %
1.	T1 W6	Written Assignment/Process Diary	2	10	10
2.	T1 W9	Photo Test/Photo Submission	2,1	5,15	20
3.	T2 W9	Photo Submission/Process Diary with Written Research	1,2	25,5	30
4.	T3 W4	Written Documentation/Process Diary	2	10	10
5.	T3 W9	Photo Submission	1	30	30

PHYSICS

PRELIMINARY COURSE 2009

ASSESSMENT COMPONENTS AND WEIGHTINGS

PHYSICS		
COMPONENTS		WEIGHTING %
<u>No.</u>		
1.	Knowledge and understanding of: <ul style="list-style-type: none"> • the history, nature, and practice of physics, applications and uses of physics and their implications for society and the environment, and current issues, research and developments in physics • kinematics and dynamics, energy, waves, fields and matter 	40
2.	Skills in planning and conducting first-hand investigations and in communicating information and understanding based on these investigations	30
3.	Skills in scientific thinking, problem solving, and in communicating understanding and conclusions	30
	Total	100

These components will be assessed in the following manner:

ASSESSMENT TASKS

Task No.	Due	Assessment Task Description	Components	Marks/Value	Total %
1.	T1 W9	Topic Test	1,3	10,5	15
2.	T2 W3	Practical Test	2,3	12,5	17
3.	T2 W10	First Hand Investigation	2,3	13,5	18
4.	T3 W7	Research Investigation	1,3	10,5	15
5.	T3 W8,9	Yearly Exam	1,2,3	20,5,10	35

SOCIETY AND CULTURE

PRELIMINARY COURSE 2009

ASSESSMENT COMPONENTS AND WEIGHTINGS

SOCIETY AND CULTURE		
COMPONENTS		WEIGHTING %
<u>No.</u>		
1.	The Social and Cultural World	20
2.	Personal and Social Identity	40
3.	Intercultural Communication	40
	Total	100

These components will be assessed in the following manner:

ASSESSMENT TASKS

Task No.	Due	Assessment Task Description	Components	Marks/Value	Total %
1.	T1 W6	Personal Reflection Written Task	1	10	10
2.	T2 W5	Research Task	2	30	30
3.	T3 W6	Research Task & Oral Presentation	3	30	30
4.	T3 W8,9	Exam	1,2,3	10,10,10	30

SOFTWARE DESIGN & DEVELOPMENT
PRELIMINARY COURSE 2009

ASSESSMENT COMPONENTS AND WEIGHTINGS

SOFTWARE DESIGN & DEVELOPMENT		
COMPONENTS		WEIGHTING %
<u>No.</u>		
1.	Knowledge	30
2.	Design and Development of Software Solutions	35
3.	Project Management Techniques	15
4.	Projects	20
	Total	100

These components will be assessed in the following manner:

ASSESSMENT TASKS

Task No.	Due	Assessment Task Description	Components	Marks/Value	Total %
1.	T1 W10	Software Project	4	10	10
2.	T1 W10	Topic Exam	1,2	15,10	20
3.	T2 W8	Software Project	4	10	10
4.	T2 W8	Topic Exam	1,2,3	10,15,10	35
	T3 W8,9	Preliminary Examination	1,2,3	10,10,5	25

STANDARD ENGLISH
PRELIMINARY COURSE 2009

ASSESSMENT COMPONENTS AND WEIGHTINGS

STANDARD ENGLISH		
COMPONENTS		WEIGHTING %
<u>No.</u>		
1.	Common Content: Area of Study: Conflict	40
2.	Module A: Texts from other places, other times	30
3.	Module B: Texts of our place, our time	30
	Total	100

These components will be assessed in the following manner:

ASSESSMENT TASKS

Task No.	Due	Assessment Task Description	Components	Marks/Value	Total %
1.	T1	Extended Response: Critical	2	20	15
2.	T2	Extended Response: Creative	1	15	20
3.	T3	Speaking Task	3	20	15
4.	T3 W8,9	Preliminary Examination	1,2,3	15,20,20	20,15,15

STUDIES OF RELIGION 2 UNIT
PRELIMINARY COURSE 2009

ASSESSMENT COMPONENTS AND WEIGHTINGS

STUDIES OF RELIGION 2 UNIT		
COMPONENTS		WEIGHTING %
<u>No.</u>		
1.	Nature of Religion and Beliefs	15
2.	Religious Tradition Depth Studies	50
3.	Religions of Ancient Origins	20
4.	Religion in Australia	15
	Total	100

These components will be assessed in the following manner:

ASSESSMENT TASKS

Task No.	Due	Assessment Task Description	Components	Marks/Value	Total %
1.	T1 W5-10	Oral Presentation & Written Report	1,3	20	20
2.	T2 W7	Structured Essay	2	20	20
3.	T3 W4	Stimulus Analysis Test	2	20	20
4.	T3 W8,9	Yearly Exam	1,2,3,4	40	40

STUDIES OF RELIGION – 1 UNIT
PRELIMINARY COURSE 2007

ASSESSMENT COMPONENTS AND WEIGHTINGS

STUDIES OF RELIGION 1 UNIT		
COMPONENTS		WEIGHTING %
<u>No.</u>		
1.	Nature of Religion and Beliefs	15
2.	Religious Tradition Depth Studies	35
	Total	50

These components will be assessed in the following manner:

ASSESSMENT TASKS

Task No.	Due	Assessment Task Description	Components	Marks/Value	Total %
1.	T1 W5-10	Oral Presentation and Written Report	1	15	30
2.	T2 W7	Structured Essay	2	15	30
3.	T3 W9,10	Yearly Exam	1,2	20	40

TEXTILES AND DESIGN
PRELIMINARY COURSE 2009

ASSESSMENT COMPONENTS AND WEIGHTINGS

TEXTILES AND DESIGN		
COMPONENTS		WEIGHTING %
<u>No.</u>		
1.	Design	40
2.	Properties and Performance	50
3.	Australian Textiles, Clothing, Footwear and Allied Industries	10
	Total	100

These components will be assessed in the following manner:

ASSESSMENT TASKS

Task No.	Due	Assessment Task Description	Components	Marks/Value	Total %
1.	T2 W1	Folio	1	10	10
2.	T2 W1	Practical	2	20	20
3.	T3 W4	Practical and Folio	1,2	15,20	35
4.	T3 W7	Oral Report	3	10	10
5.	T3 W8,9	Yearly Exam	1,2	10,15	25

VISUAL ARTS
PRELIMINARY COURSE 2009

ASSESSMENT COMPONENTS AND WEIGHTINGS

VISUAL ARTS		
COMPONENTS		WEIGHTING %
<u>No.</u>		
1.	Art Making	50
2.	Art History and Criticism	50
	Total	100

These components will be assessed in the following manner:

ASSESSMENT TASKS

Task No.	Due	Assessment Task Description	Components	Marks/Value	Total %
1.	T1 W7	Art History & Criticism	2	15	15
2.	T1 W10	Art Making and Art Diary	1	15	15
3.	T2 W6	Art History and Criticism	1,2	15	15
4.	T3 W1	Art Making and Art Diary	1	15	15
5.	T3 W6	Art Making and Art Diary	1	20	20
6.	T3 W8,9	Yearly Exam	1,2	20	20

2009 YEAR 11 CALENDAR OF ASSESSMENT TASKS

WK	TERM 1 - 2009 28 January - 9 April	TERM 2 - 2009 28 April - 10 July	TERM 3 - 2009 27 July – 2 Oct
1		Textiles & Design	Ancient History, Modern History, Visual Arts
2		Drama, Japanese Beginners	Business Studies, Economics, French Continuers, Indonesian Continuers, Italian Continuers, Music 1
3		Chinese Continuers, Music 1, Music 2, PDHPE, Physics	Dance, Italian Beginners, Italian Continuers, Music 2
4		Business Studies	Biology, Business Studies, Chemistry, Chinese Continuers, French Continuers, Indonesian Continuers, Italian Beginners, Legal Studies, PVDM, PVDM 1 unit, Studies of Religion 2 unit, Textiles & Design
5	English Fundamentals, Modern History, PDHPE	ASSESSMENT FREE DAY MONDAY English ESL, Society & Culture	English Extension 1, English Fundamentals
6	Ancient History, Chinese BS, PVDM, PVDM 1 unit, Society & Culture	Biology, Chemistry, Community & Family Studies, Economics, Hospitality, Indonesian Continuers, Modern History, Music 2, Visual Arts	Business Studies, Chinese BS, Community & Family Studies, Economics, English ESL, Legal Studies, Music 1, Music 2, PDHPE, Society & Culture, Visual Arts
7	ASSESSMENT FREE DAY TUESDAY Community & Family Studies, Drama, Economics, Music 1, Visual Arts	Ancient History, Chinese Continuers, French Continuers, Studies of Religion 1 & 2 unit	Chinese Continuers, Drama, Food Technology, French Continuers, Indonesian Continuers, Physics, Textiles & Design
8	ASSESSMENT FREE DAY THU/FRI Biology	ASSESSMENT FREE DAY THURSDAY Business Studies, Dance, English Fundamentals, Food Technology, General Mathematics, Italian Continuers, Legal Studies, Mathematics, Music 1, SDD	YEARLY EXAMS (begin Thursday)
9	Chemistry, Food Technology, General Mathematics, Hospitality, Japanese Beginners, Legal Studies, Mathematics, Music 1, PVDM, PVDM 1 unit, Physics	ASSESSMENT FREE DAY WEDNESDAY Chinese BS, Indonesian Continuers, Italian Continuers, Japanese Beginners, Maths Ext.1, Music 2, PVDM, PVDM 1 unit	YEARLY EXAMS
10	Ancient History, Business Studies, Dance, Maths Ext.1, Modern History, SDD, Visual Arts	Drama, English ESL, Japanese Beginners, PDHPE, Physics	Hospitality
11	ASSESSMENT FREE DAY WEDNESDAY English ESL, Music 2	ASSESSMENT FREE DAY MONDAY Chinese Continuers, French Continuers	

English Advanced: Assessment tasks in Term 1,2,3 – week to be advised

English Extension 1: Assessment tasks in Term 1,2 – week to be advised

Italian Beginners: Tasks in Term 1,2,3

Standard English: Tasks in Term 1,2,3

Studies of Religion 1 & 2 unit: Task in Term 1, Week 5-10

2009 YEAR 11 STUDENT PLANNER OF ASSESSMENT TASKS

WK	TERM 1 - 2009 28 January - 9 April	TERM 2 - 2009 28 April - 10 July	TERM 3 - 2009 27 July – 2 Oct
1			
2			
3			
4			
5		ASSESSMENT FREE DAY MONDAY	
6			
7	ASSESSMENT FREE DAY TUESDAY		
8	ASSESSMENT FREE DAY THU/FRI	ASSESSMENT FREE DAY THURSDAY	YEARLY EXAMS (begin Thursday)
9		ASSESSMENT FREE DAY WEDNESDAY	YEARLY EXAMS
10			
11	ASSESSMENT FREE DAY WEDNESDAY	ASSESSMENT FREE DAY MONDAY	

This page can be detached for use.



BURWOOD GIRLS HIGH SCHOOL

YEAR 11

ASSESSMENT POLICY

AND PROCEDURES

2009